



# West Virginia Wesleyan College Fact Book

COMPILED BY  
TAMMY CRITES, DIRECTOR OF INSTITUTIONAL RESEARCH

## Table of Contents

<b>Mission and Organizational Structure</b> .....	2
<b>West Virginia Wesleyan College Statement of Mission</b> .....	3
<b>Wesleyan Accreditation</b> .....	3
<b>Organizational Chart Fall 2015-16</b> .....	4
<b>West Virginia Wesleyan College Board of Trustees and Administrative Executive Officers 2015-2016</b> .....	11
<b>Administrative Executive Officers</b> .....	12
<b>Staff Council Officers 2015-16</b> .....	12
<b>West Virginia Wesleyan College Academic Structure 2015-16</b> .....	13
<b>Academic School Directors</b> .....	14
<b>Faculty Senate 2015-16</b> .....	14
<b>Executive Committee of Faculty Assembly</b> .....	14
<b>Fall 2015 New Students</b> .....	15
<b>New Student Admission Funnel and Academic Profile</b> .....	16
<b>First-time Full-time Freshmen Financial Aid Profile</b> .....	19
<b>Fall 2015 Student Body</b> .....	20
<b>Historical Enrollment Summary</b> .....	20
<b>Fall 2015 All Students by Gender, Race and Ethnicity</b> .....	25
<b>Declared Academic First and Second Majors by School- Fall 2015</b> .....	27
<b>All Student Athletes by Scholarship Status</b> .....	32
<b>Student Outcomes</b> .....	33
<b>Institutional Yearly Retention Rates</b> .....	34
<b>Yearly Retention and Graduation Rates</b> .....	35
<b>Degrees Awarded by Major Field of Study</b> .....	36
<b>2015-2016 Placement Report</b> .....	40
<b>Faculty and Staff</b> .....	41
<b>Fall 2015 Employee Summary</b> .....	42
<b>Faculty Profile</b> .....	43
<b>Financials and Fund Raising</b> .....	44
<b>Unrestricted Revenues and Gains</b> .....	45
<b>Expenditures by Category</b> .....	46
<b>Giving by Source</b> .....	47
<b>West Virginia Wesleyan College Benchmark Institutions</b> .....	42

# Mission and Organizational Structure



## West Virginia Wesleyan College Statement of Mission

West Virginia Wesleyan College challenges its students to a life-long commitment to develop their intellectual, ethical, spiritual, and leadership potential and to set and uphold standards of excellence. Firmly rooted in the liberal arts tradition and closely related to The United Methodist Church, the College is a community of learning based on fundamental principles formed at the intersection of Christian faith and liberal education: intellectual rigor, self-discovery, human dignity, mutual support, social justice, self-discipline, mental and physical wellness, the appreciation of diversity and the natural world, and the judicious use of resources. The College recognizes and affirms its interdependence with the external communities—local, regional, national, and global—and its covenant with the people of West Virginia to share its educational and cultural resources. West Virginia Wesleyan College prepares its students through its curriculum of arts and sciences, pre-professional, professional, and graduate studies, and its rich campus life program. As a residential institution of higher education, the College aspires to graduate broadly educated men and women who

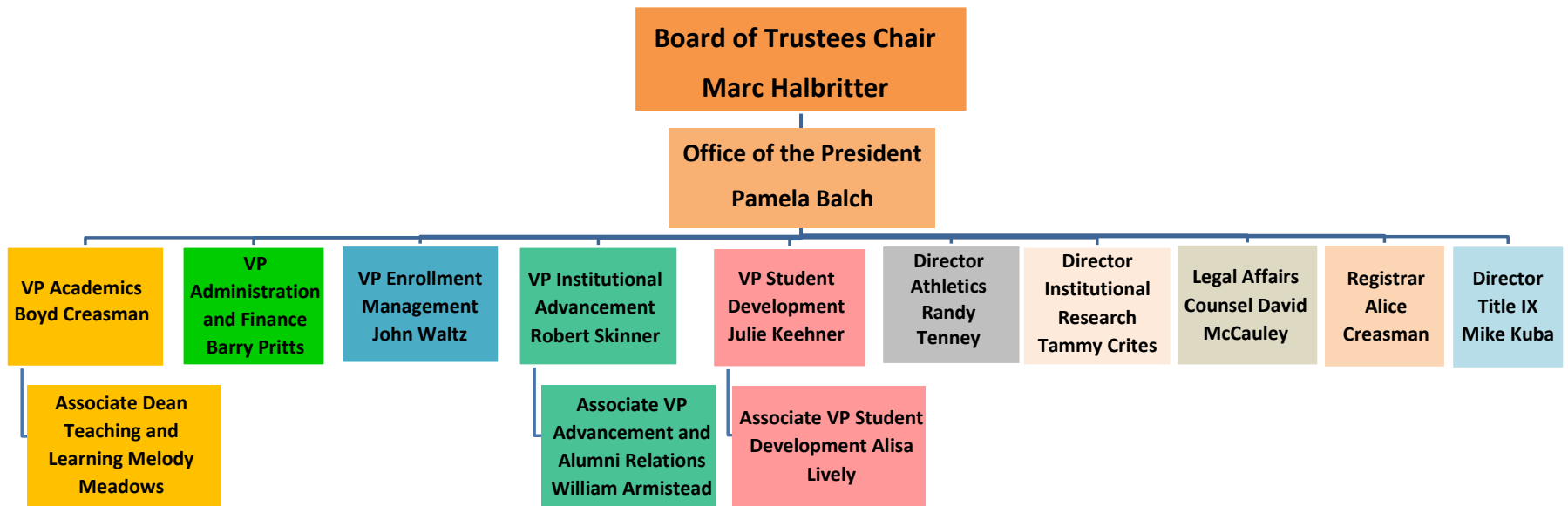
- Think critically and creatively,
  - Communicate effectively,
    - Act responsibly, and
      - Demonstrate their local and world citizenship through service.

## Wesleyan Accreditation

West Virginia Wesleyan is accredited by The Higher Learning Commission, A Commission of the North Central Association of Colleges and Schools (30 North LaSalle Street, Suite 2400, Chicago, IL 60602-2504; telephone 1-800-621-7440) and approved by the University Senate of The United Methodist Church. It is a member of the National Association of Schools of Music and is approved by the West Virginia Department of Education. The College participates in the Interstate Certification Project, whereby a number of states certify teachers graduating from Wesleyan's Department of Education. The nursing program is accredited by the Accreditation Commission for Education in Nursing, Inc., formerly the National League for Nursing Accrediting Commission (3343 Peachtree Road NE, Suite 850, Atlanta, GA, 30326; telephone 404-975-5000) and approved by the State of West Virginia Board of Examiners for Registered Nurses. The athletic training program is accredited by the Commission on Accreditation of Athletic Training Education (CAATE), (6836 Austin Center Blvd., Suite 250, Austin, TX 78731-3193, and 512-733-9700). The School of Business is a candidate for accreditation with the Accreditation Council for Business Schools and Programs (ACBSP), (11520 West 119th Street, Overland Park, KS 66213, 913-339-9356). The College holds membership in the Appalachian College Association, The National Association of Independent Colleges and Universities, the American Association of Colleges for Teacher Education, the National Association of Schools and Colleges of The United Methodist Church, Campus Compact, and the Council of Independent Colleges.

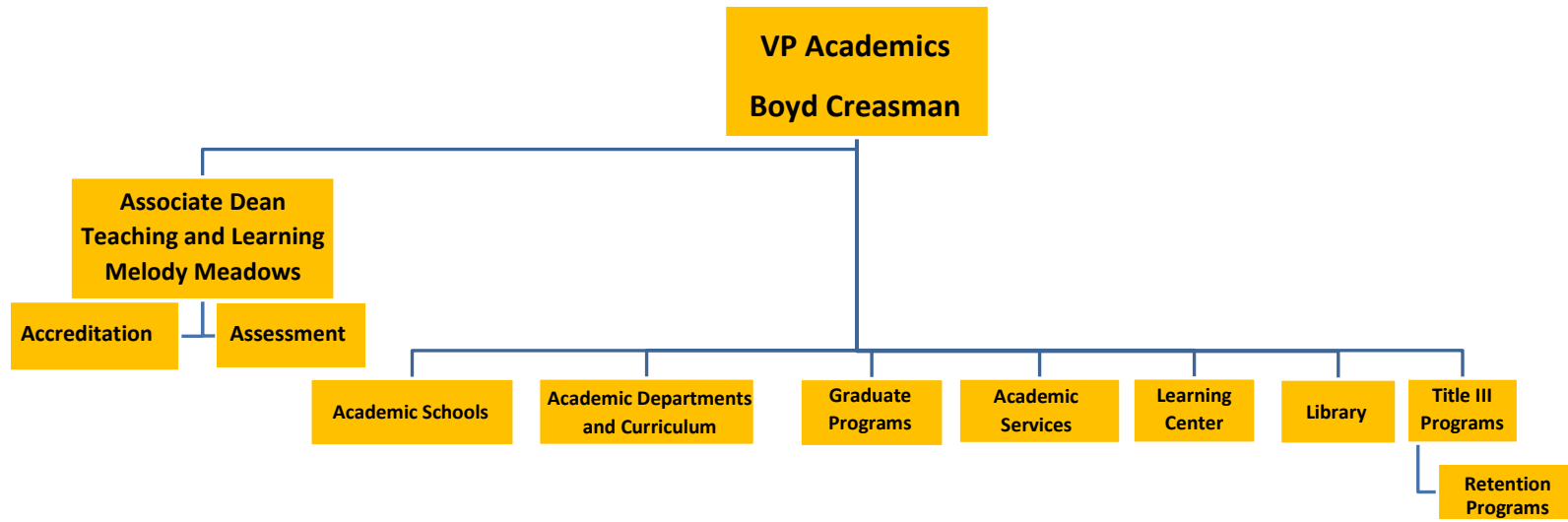
Organizational Chart Fall 2015-16

**West Virginia Wesleyan College  
Organizational Chart  
President Direct Reports and Associate Vice Presidents  
2015-16**  
(As of October 2015)



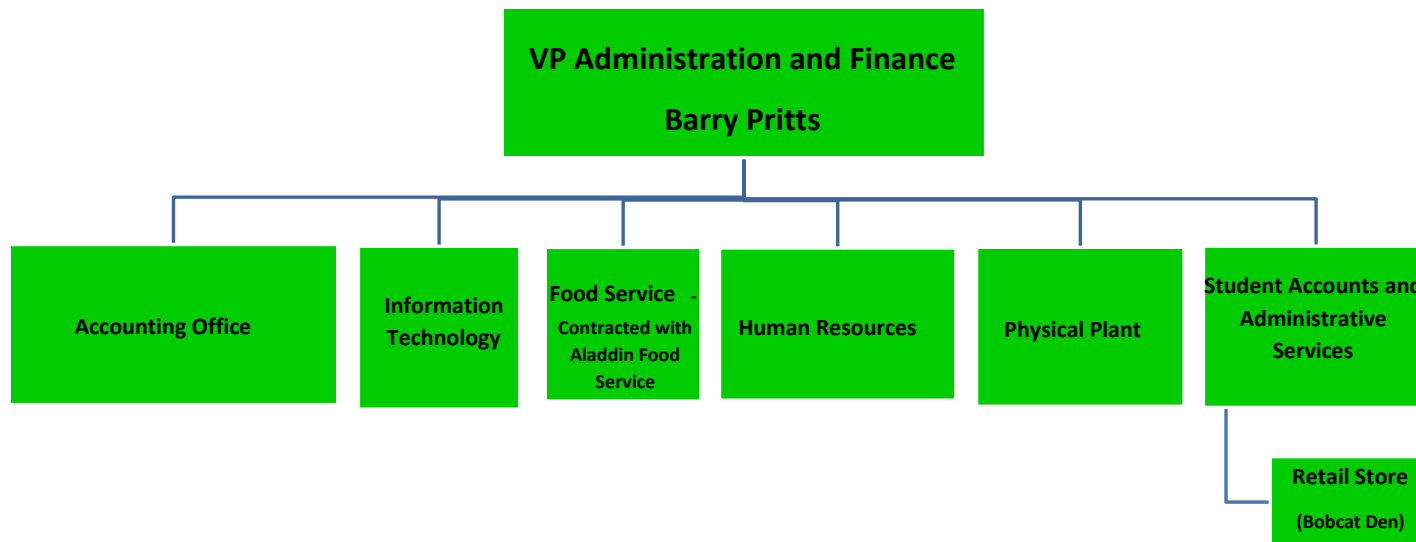
# Academic Affairs 2015-16

(As of October 2015)



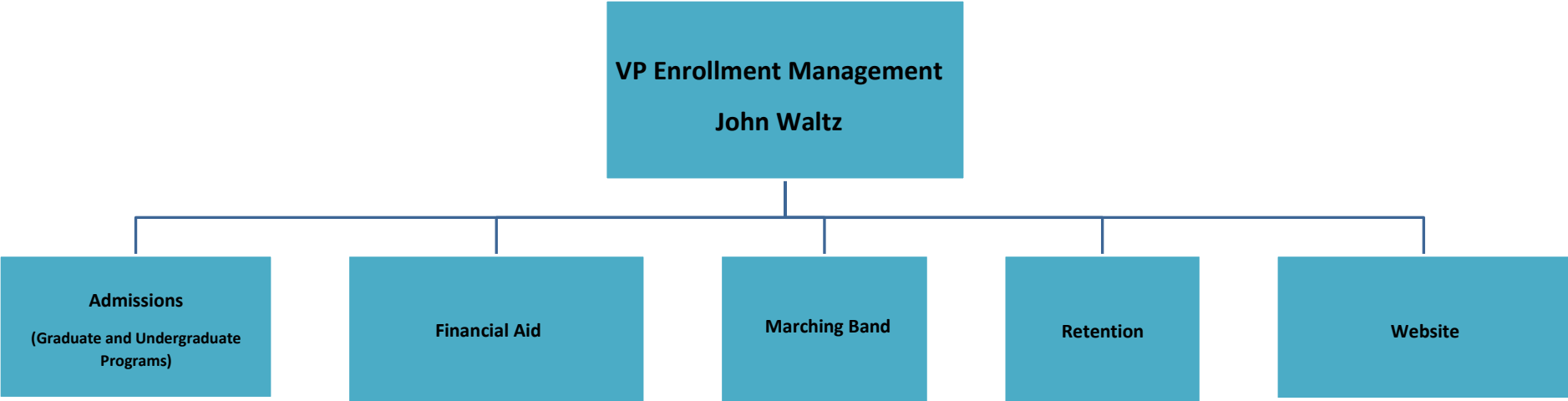
# Administration and Finance 2015-16

(As of October 2015)



# Enrollment Management 2015-16

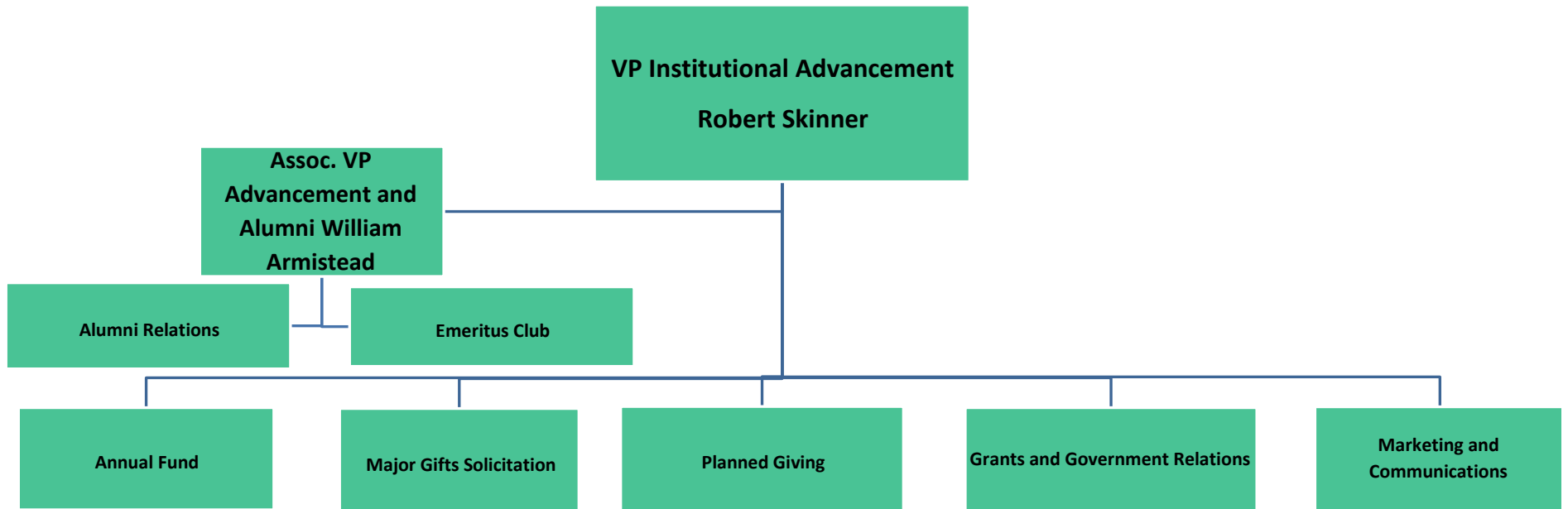
(As of October 2015)





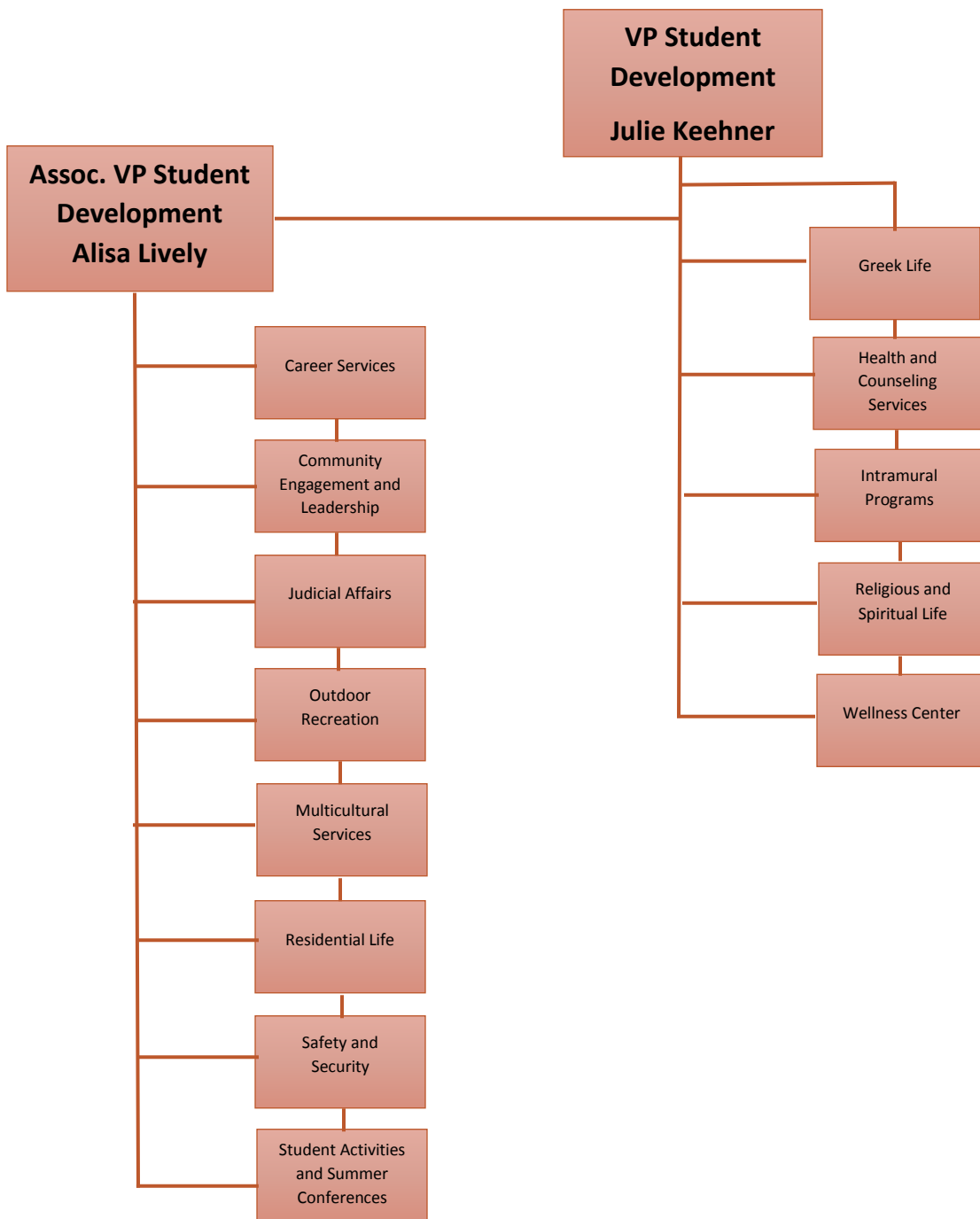
# Institutional Advancement 2015-16

(As of October 2015)



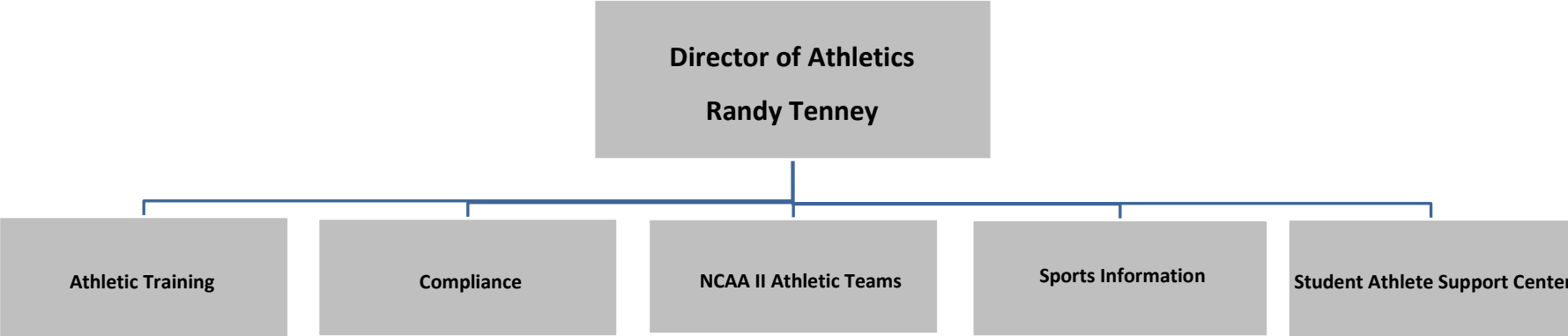
# Student Development 2015-16

(As of October 2015)



**Athletics 2015-16**

(As of October 2015)



## West Virginia Wesleyan College Board of Trustees and Administrative Executive Officers 2015-2016

### Board of Trustees: Elected Members

**Thomas H. Albinson II '76**  
**Gavin S. Appleby '76**  
**Anne S. Barth**  
**Kari L. Carpenter Mattson '95**  
**Krista L. Denning '97**  
**Tracy S. Dunn-Cunningham**  
**William J. Echols '60**  
**John D. Esaias '71, (2nd Vice Chair)**  
**C. Mitchell Evans, '83**  
**Leigh H. Fleming '83, (4th Vice Chair)**  
**Gary A. Frantz '75, (3th Vice Chair)**  
**William B. Grant '75, (Secretary)**  
**Marc A. Halbritter, (Chairman)**  
**Timothy G. Harper '72**  
**Joseph S. Kenaston '81**  
**John F. Lacia '71**  
**Philip A. Lindeman '80, (5<sup>th</sup> Vice Chair)**

**Brian A. Maxwell**  
**David C. Myers '70 (1st Vice Chair)**  
**Herbert Oye**  
**Charles L. Pickering '78**  
**Caroline H. Rapping '79**  
**Michael B. Reger '89**  
**Sarah J. Rinehart '97**  
**Kevin W. Ryan '66**  
**John W. Shimrak '67**  
**Dennis R. Slagle '76**  
**Scott H. Strickler '84**  
**John C. Taylor '80**  
**Mary Jane Willis '68**  
**Robert E. Wise**  
**Melinda J. Witt '74**  
**Felicia Wooton Williams**  
**David A. Young '87**

### Board of Trustees: Ex Officio Members

Resident Bishop of the West Virginia Area Conference, **Sandra L. Steiner Ball,**

Resident Bishop of the Western Pennsylvania Conference, **Thomas J. Bickerton '80**

President of the College, **Pamela M. Balch '71**

President of the Alumni Council, **Danette E. Ifert Johnson '90**

Chair of Faculty Senate, **Jeanne D. Sullivan**

Chair of Staff Council, **Shauna G. Jones '92**

President of the Student Senate, **Cody A. O'Meara**

## Administrative Executive Officers

**Pamela M. Balch, Ed.D**, President of the College

**Boyd H. Creasman, Ph.D**, Vice President for Academic Affairs and Dean of the College

**John Waltz, M.A.**, Vice President for Enrollment Management

**Barry R. Pritts, Ph.D**, Vice President for Administration and Finance

**Robert N. Skinner, M.A.**, Vice President of Advancement

**Julia A. Keehner, M.S**, Vice President for Student Development

## Staff Council Officers 2015-16

**Sauna Jones**, Chair

**Jonathan Andrew**

**Alison Clausen**

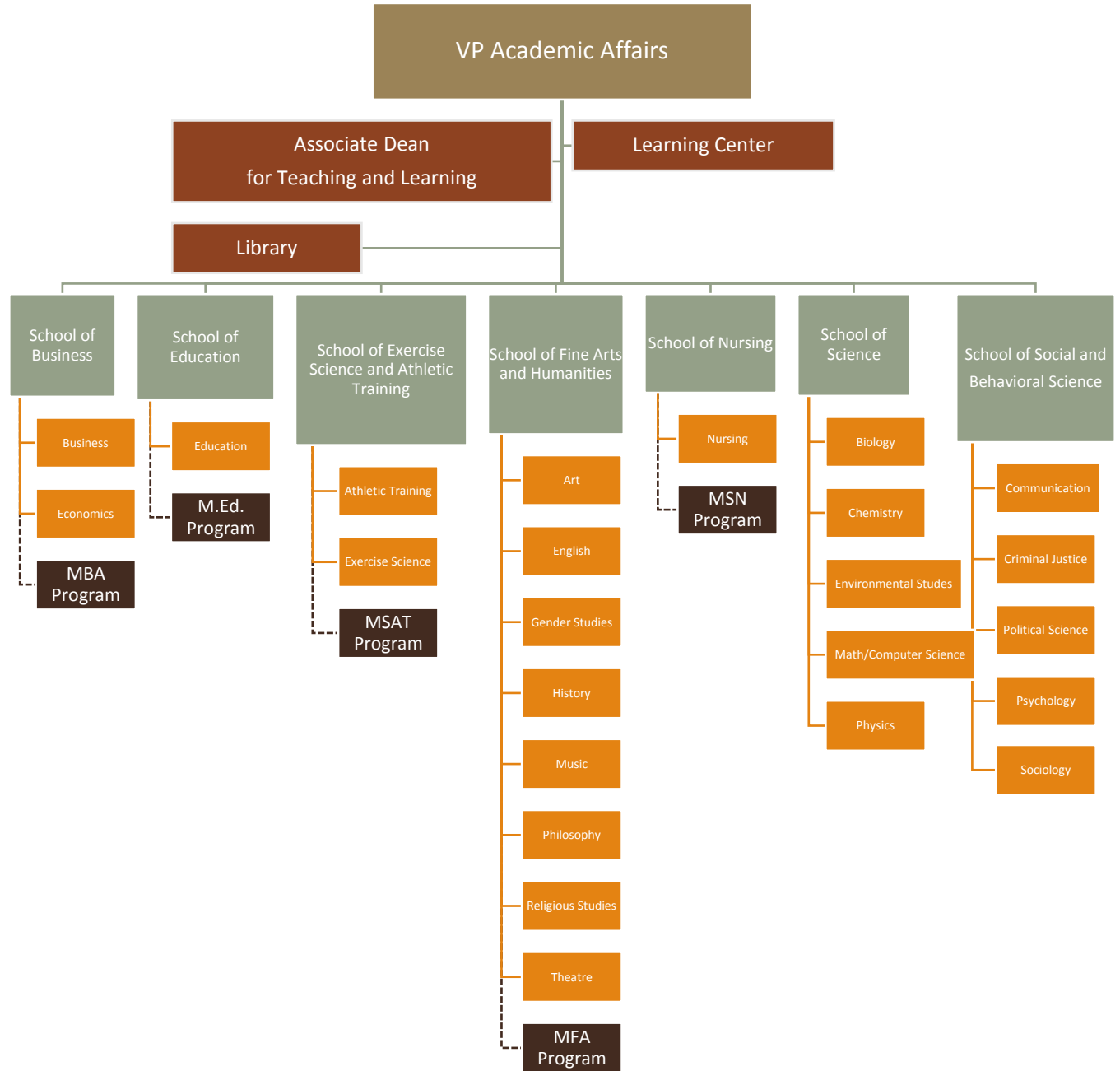
**Alisa Lively**

**Charlie Powell**

**Leah Ripley**

**Alice Teets**

West Virginia Wesleyan College Academic Structure 2015-16



## Academic School Directors

**Susan L. Aloï, Ed.D.**, School of Business

**Karen R. Petitto, Ed.D.**, School of Education

**Stephen Cresswell, Ph.D.**, School of Fine Arts and Humanities

**Rae Emrick., MSAT** School of Exercise Science

**Susan Leight Ph.D.**, School of Nursing

**Luke Huggins, Ph.D.**, School of Science

**Karen S. Miller, Ph.D.**, School of Social and Behavioral Science

## Faculty Senate 2015-16

### **Executive Committee of Faculty Assembly**

**Jeanne Sullivan**, Chair of the Faculty

**Shirley Fortney**, Vice Chair of the Faculty

**Kim Bjorgo-Thorne**

**Melissa Buice**

**Ashley Lawson**

**Greg Mach**

**Paula McGrew**

Fall 2015 New Students

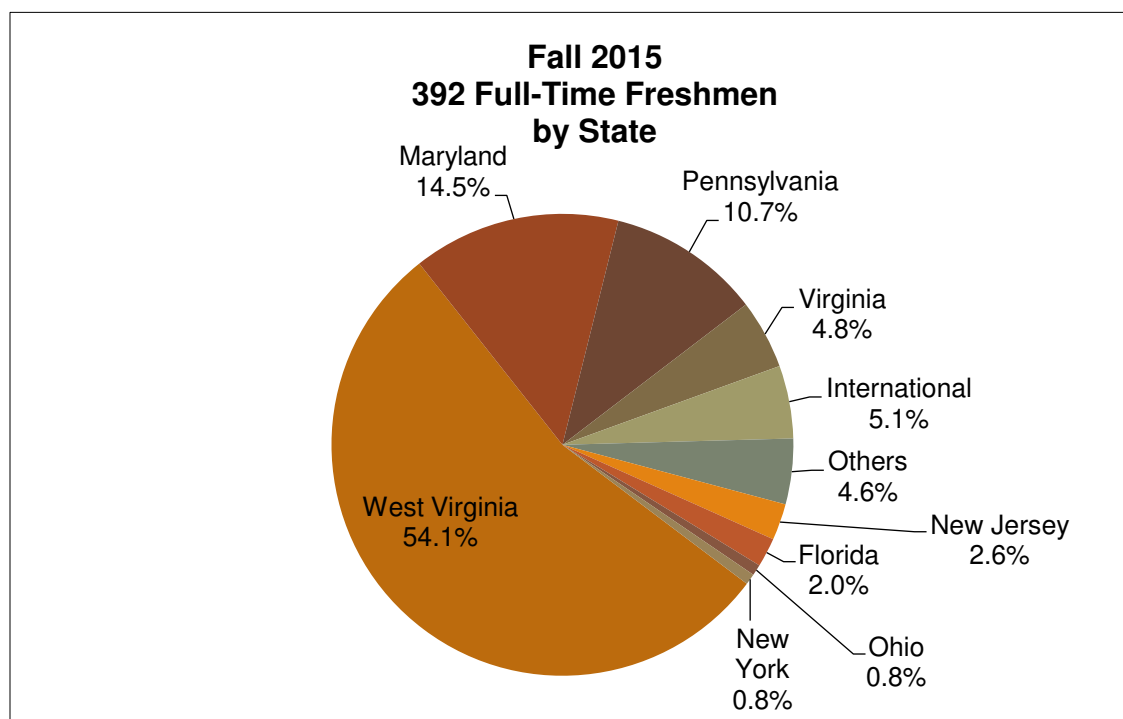




## New Student Admission Funnel and Academic Profile

### Fall 2011-2015 Full-Time Freshmen Enrollment Funnel and Academic Profile

	Fall 2011	Fall 2012	Fall 2013	Fall 2014	Fall 2015
Applicants	1743	2008	1762	1788	1782
Accepted	1361	1557	1356	1377	1376
Accept rate	78.1 %	77.5 %	77.0 %	77.0 %	77.2 %
Matriculates	405	404	471	415	392
Yield	29.8 %	25.9 %	34.7 %	30.1 %	28.5 %
High School GPA	3.36	3.37	3.47	3.49	3.48
ACT Composite Score	22.6	21.9	22.5	22.5	22.2
SAT Verbal Score	471	483	490	484	483
SAT Math Score	489	487	498	487	491
SAT Written Score	460	466	477	473	467
SAT Combined (M and V only)	960	970	989	971	974
SAT Combined All	1422	1433	1463	1444	1445



## Fall 2011-2015 Full-Time Freshmen Demographics

	Fall 2011	Fall 2012	Fall 2013	Fall 2014	Fall 2015
<b>Home State</b>					
West Virginia	217	210	273	254	212
Maryland	53	46	51	40	57
Pennsylvania	40	40	34	39	42
Virginia	17	17	24	22	19
International	26	7	21	11	20
Others	22	23	37	19	18
New Jersey	7	7	6	8	10
Florida	13	20	12	11	8
Ohio	7	16	10	6	3
New York	1	13	1	2	3
New Hampshire	0	1	0	2	0
Massachusetts	1	0	0	1	0
Connecticut	1	3	1	0	0
Maine	0	1	1	0	0
<b>Religious</b>					
United Methodist	58	60	59	66	69
Roman Catholic	28	39	37	43	33
Baptist	26	41	52	44	34
Christian Missionary	0	0	0	0	0
Lutheran	1	0	3	2	6
Nazarene	5	3	1	4	1
Jewish	0	0	1	2	1
Presbyterian	11	6	10	7	10
Episcopal	3	3	2	3	3
United Church of Christ	2	3	6	7	4
Other	50	51	63	86	57
No Preference	221	206	237	151	174

### Ethnic Classification

	Fall 2011	Fall 2012	Fall 2013	Fall 2014	Fall 2015
White American	298	311	367	334	298
African American	61	64	48	39	45
Asian American	1	0	0	2	1
American Indian/Alaska Native	1	0	0	2	0
Spanish American(Hispanic)	6	8	10	9	12
Pacific Islander/Hawaiian	0	0	0	1	1
Not specified	11	7	4	2	4
International	26	7	21	10	20
More than one	1	7	21	16	11

### Gender

Female	186	210	228	245	215
Male	219	194	248	170	177

### Academic Majors Upon Admission

Business/Economics	44	51	56	33	58
Undecided/General Studies	50	54	56	51	42
Biology/Environmental Science	52	52	59	45	42
Exercise Science/Athletic Training	35	49	58	50	41
Nursing	37	45	51	56	40
Chemistry/Biochemistry	12	15	24	30	30
Engineering 3/2 , Physics, Geophysics	36	22	38	29	30
Education	49	30	32	33	25
Criminal Justice/Sociology/Poli Sci	18	24	28	23	25
Psychology	21	16	10	17	11
Music/Music Education	5	7	9	10	11
Art	8	9	10	8	8
Math/Computer Science	10	7	13	6	8
Theatre and Music Theatre and Arts Admin.	5	6	10	5	7
Communication Public Relations	10	5	8	5	6
English	7	5	4	7	4
History and International Studies	5	6	4	6	2
Christian Education/Religious Studies/Philosophy	1	1	1	0	2
Gender Studies				1	0

Source: WVWC Admission Records as of the Census date

## First-time Full-time Freshmen Financial Aid Profile

<b>Undergraduate Cost of Attendance and Direct Cost</b>					
	<b>2011-12</b>	<b>2012-13</b>	<b>2013-14</b>	<b>2014-15</b>	<b>2015-16</b>
WVWC Tuition and Fees	\$24,964	\$25,804	\$26,794	\$27,858	\$28,792
WVWC Room and Board	\$7,390	\$7,510	\$7,740	\$7,890	\$8,066
<b>WVWC Direct Cost</b>	<b>\$32,354</b>	<b>\$33,314</b>	<b>\$34,534</b>	<b>\$35,748</b>	<b>\$36,858</b>
WVWC Indirect Cost(Book, Supplies, Travel)	\$6,000	\$6,000	\$6,000	\$6,000	\$6,000
<b>Total Cost of Attendance</b>	<b>\$38,354</b>	<b>\$39,314</b>	<b>\$40,534</b>	<b>\$41,748</b>	<b>\$42,858</b>
<b>Awarded Financial Aid to First Time Full-Time Freshmen</b>					
	<b>Fall 2011</b>	<b>Fall 2012</b>	<b>Fall 2013</b>	<b>Fall 2014</b>	<b>Fall 2015</b>
Number First-time Full-time Freshmen	405	404	471	415	392
% Completing FAFSA	92%	96%	93%	91%	94%
% applied for Need or Merit Financial Aid	99%	100%	99%	99%	99%
% received any Financial Aid	99%	100%	99%	99%	99%
% received scholarship or grant aid	99%	100%	99%	99%	99%
% received self-help aid	72%	76%	89%	75%	70%
Average Financial Aid Award All Sources*	\$24,554	\$25,490	\$27,273	\$28,247	\$30,416
Average Scholarship and Grant Award All Sources	\$19,978	\$20,494	\$22,367	\$22,905	\$23,829
Average Self Help Award All Sources	\$4,576	\$4,996	\$4,738	\$5,343	\$4,633
% received Alternative Loans	4%	9%	3%	6%	5%
% received Parent Plus Loans	18%	11%	8%	11%	16%
Median Estimated Family Contribution	\$8,089	\$7,321	\$8,371	\$7,356	\$10,541
% Pell Eligible	40%	40%	37%	40%	34%
<b>First Time Full-Time Freshmen Net Cost of Attendance and Out of Pocket Direct Cost</b>					
	<b>2011-12</b>	<b>2012-13</b>	<b>2013-14</b>	<b>2014-15</b>	<b>2015-16</b>
Net Cost of Attendance ( <i>Total Cost of Attendance -Ave. Scholarships and Grants</i> )	\$18,376	\$18,820	\$18,167	\$18,843	\$19,029
Out of Pocket Direct Cost ( <i>Total Direct Cost -Average Financial Aid Award All Source</i> )	\$7,800	\$7,824	\$7,261	\$7,501	\$6,442

Source: Financial Aid Files as of no later than November 15th each year.

\*Does not Include Parent Loans

## Fall 2015 Student Body



## Historical Enrollment Summary

<b>UNDERGRADUATE STUDENT ENROLLMENT</b>										
<b>NEW FULL TIME STUDENTS</b>	<b>2011-2012</b>		<b>2012-2013</b>		<b>2013-2014</b>		<b>2014-2015</b>		<b>2015-2016</b>	
	Fall	Spring	Fall	Spring	Fall	Spring	Fall	Spring	Fall	Spring
Fall First Year	405	348	404	347	471	415	415	374	392	341
Spring First Year		6		8		5		2		3
Fall Transfers	60	48	61	41	39	34	40	35	49	46
Spring Transfers		13		13		10		16		6
Fall Visitors	3	3	2	2	5	4	4	3	6	4
Spring Visitors	2	2	2	3	2	1	0	1		2
<b>Total</b>	<b>470</b>	<b>420</b>	<b>469</b>	<b>414</b>	<b>517</b>	<b>469</b>	<b>459</b>	<b>431</b>	<b>447</b>	<b>402</b>
<b>RETURNING FULL TIME STUDENTS</b>										
	<b>2011-2012</b>		<b>2012-2013</b>		<b>2013-2014</b>		<b>2014-2015</b>		<b>2015-2016</b>	
	Fall	Spring	Fall	Spring	Fall	Spring	Fall	Spring	Fall	Spring
Continuing Students	847	782	809	753	816	758	891	835	910	832
Fall readmits	18		11		12		7		6	
Spring Readmits		2		14		6		2		8
<b>Total</b>	<b>865</b>	<b>784</b>	<b>820</b>	<b>767</b>	<b>828</b>	<b>764</b>	<b>898</b>	<b>837</b>	<b>916</b>	<b>840</b>
<b>TOTAL UNDERGRADUATE</b>										
	<b>2011-2012</b>		<b>2012-2013</b>		<b>2013-2014</b>		<b>2014-2015</b>		<b>2015-2016</b>	
	Fall	Spring	Fall	Spring	Fall	Spring	Fall	Spring	Fall	Spring
<b>Full-time</b>	1335	1204	1289	1181	1345	1233	1357	1268	1363	1242
<b>Part-time</b>	25	32	26	27	22	30	33	35	26	38
<b>Total Headcount</b>	1360	1236	1315	1208	1367	1263	1390	1303	1389	1280
<b>Undergraduate FTE</b>	1347	1221	1302	1195	1356	1246	1372	1284	1373	1258
<b>Average Undergraduate FTE</b>	<b>1284</b>		<b>1248</b>		<b>1301</b>		<b>1328</b>		<b>1315</b>	

<b>GRADUATE STUDENT ENROLLMENT</b>										
<b>MASTER OF BUSINESS ADMINISTRATION***</b>										
	<b>2011-2012</b>		<b>2012-2013</b>		<b>2013-2014</b>		<b>2014-2015</b>		<b>2015-2016</b>	
	<b>Fall</b>	<b>Spring</b>	<b>Fall</b>	<b>Spring</b>	<b>Fall</b>	<b>Spring</b>	<b>Fall</b>	<b>Spring</b>	<b>Fall</b>	<b>Spring</b>
Full-time	22	17	14	14	23	23	15	12	9	7
Part-time	5	4	6	1	4	1	1	0	1	1
Total Headcount	27	21	20	15	27	24	16	12	10	8
FTE	25	19	17	15	25	24	15	12	9.5	7.5
<i>Five Year MBA Program (not included in above MBA figures)</i>	17	23	23	20	19	23	14	13	10	24
<b>MASTER'S IN EDUCATION****</b>										
	<b>2011-2012</b>		<b>2012-2013</b>		<b>2013-2014</b>		<b>2014-2015</b>		<b>2015-2016</b>	
	<b>Fall</b>	<b>Spring</b>	<b>Fall</b>	<b>Spring</b>	<b>Fall</b>	<b>Spring</b>	<b>Fall</b>	<b>Spring</b>	<b>Fall</b>	<b>Spring</b>
Full-time	21	23	19	18	12	12	12	14	16	14
Part-time	12	9	7	12	5	6	5	9	4	2
Total Headcount	33	32	26	30	17	18	17	23	20	16
FTE	27.8	27.5	22.5	24.0	14.5	14.3	14.83	17.5	18.2	15.1
<i>Five YEAR MED (not included in above MED figures)</i>	10	12	11	12	8	6	8	13	12	13
<b>MASTER OF SCIENCE in ATHLETIC TRAINING##</b>										
	<b>2011-2012</b>		<b>2012-2013</b>		<b>2013-2014</b>		<b>2014-2015</b>		<b>2015-2016</b>	
	<b>Fall</b>	<b>Spring</b>	<b>Fall</b>	<b>Spring</b>	<b>Fall</b>	<b>Spring</b>	<b>Fall</b>	<b>Spring</b>	<b>Fall</b>	<b>Spring</b>
Full-time	8	8	9	9	10	10	12	11	12	11
Part-time	0	0	1	0	0	0	0	1	0	1
Total Headcount	8	8	10	9	10	10	12	12	12	12
FTE	8	8	9.17	9	10	10	12	11.83	12	11.5
<b>Masters of Science in Nursing***</b>										
	<b>2011-2012</b>		<b>2012-2013</b>		<b>2013-2014</b>		<b>2014-2015</b>		<b>2015-2016</b>	
	<b>Fall</b>	<b>Spring</b>	<b>Fall</b>	<b>Spring</b>	<b>Fall</b>	<b>Spring</b>	<b>Fall</b>	<b>Spring</b>	<b>Fall</b>	<b>Spring</b>
Full-time	10	8	10	8	24	28	44	51	67	53
Part-time	3	5	1	4	5	9	10	6	9	7
Total Headcount	13	13	11	12	29	37	54	57	76	60
FTE	12.5	11.17	10.5	10	26.5	32.5	49.5	54	72.2	56.88
<b>Masters in Fine Arts-Creative Writing####</b>										
	<b>2011-2012</b>		<b>2012-2013</b>		<b>2013-2014</b>		<b>2014-2015</b>		<b>2015-2016</b>	
	<b>Fall</b>	<b>Spring</b>	<b>Fall</b>	<b>Spring</b>	<b>Fall</b>	<b>Spring</b>	<b>Fall</b>	<b>Spring</b>	<b>Fall</b>	<b>Spring</b>
Full-time	11	11	12	21	19	21	22	19	11	14
Part-time	0	0	0	0		0		0	0	0
Total Headcount	11	11	12	21	19	22	22	19	11	14
FTE	11	11	12	21	19	22	22	19	11	14
<b>TOTAL MASTERS LEVEL GRADUATE STUDENTS</b>										
	<b>2011-2012</b>		<b>2012-2013</b>		<b>2013-2014</b>		<b>2014-2015</b>		<b>2015-2016</b>	
	<b>Fall</b>	<b>Spring</b>	<b>Fall</b>	<b>Spring</b>	<b>Fall</b>	<b>Spring</b>	<b>Fall</b>	<b>Spring</b>	<b>Fall</b>	<b>Spring</b>
<b>Full-time Enrollment</b>	72	67	64	70	88	94	105	107	115	99
<b>Part-time Enrollment</b>	20	18	15	17	14	16	16	16	14	11
<b>Total Headcount</b>	92	85	79	87	102	111	121	123	129	110
<b>FTE</b>	84	77	71	79	95	102	113	114	122.8	105
<b>Average Graduate FTE</b>	80		75		99		114		114	

<b>TOTAL STUDENT BODY ENROLLMENT SUMMARY</b>										
	<b>2011-2012</b>		<b>2012-2013</b>		<b>2013-2014</b>		<b>2014-2015</b>		<b>2015-2016</b>	
	<b>Fall</b>	<b>Spring</b>	<b>Fall</b>	<b>Spring</b>	<b>Fall</b>	<b>Spring</b>	<b>Fall</b>	<b>Spring</b>	<b>Fall</b>	<b>Spring</b>
<b>Total Student Body Full-time Enrollment</b>	1407	1271	1353	1251	1433	1327	1462	1375	1478	1341
<b>Total Student Body Part-time Enrollment</b>	45	50	41	44	36	46	49	51	40	49
<b>Total Student Body Headcount Enrollment</b>	1452	1321	1394	1295	1469	1374	1511	1426	1518	1390
<b>Total Student Body Semester FTE</b>	1431	1297	1373	1273	1451	1349	1485	1399	1496	1363
<b>Total Student Body Average FTE</b>	<b>1364</b>		<b>1323</b>		<b>1400</b>		<b>1442</b>		<b>1429</b>	

\*\*\* The 5 year MBA program students are officially counted in the undergraduate headcount and FTE numbers but are also enrolled in one or more masters level courses.

\*\*\*\* The MED PROGRAM was reestablished in Fall 2007. The 5 year MED program students are officially counted in the undergraduate headcount and FTE numbers but are also enrolled in one or more masters level courses.

## The MS AT Program had its first enrollment in Fall 2008.

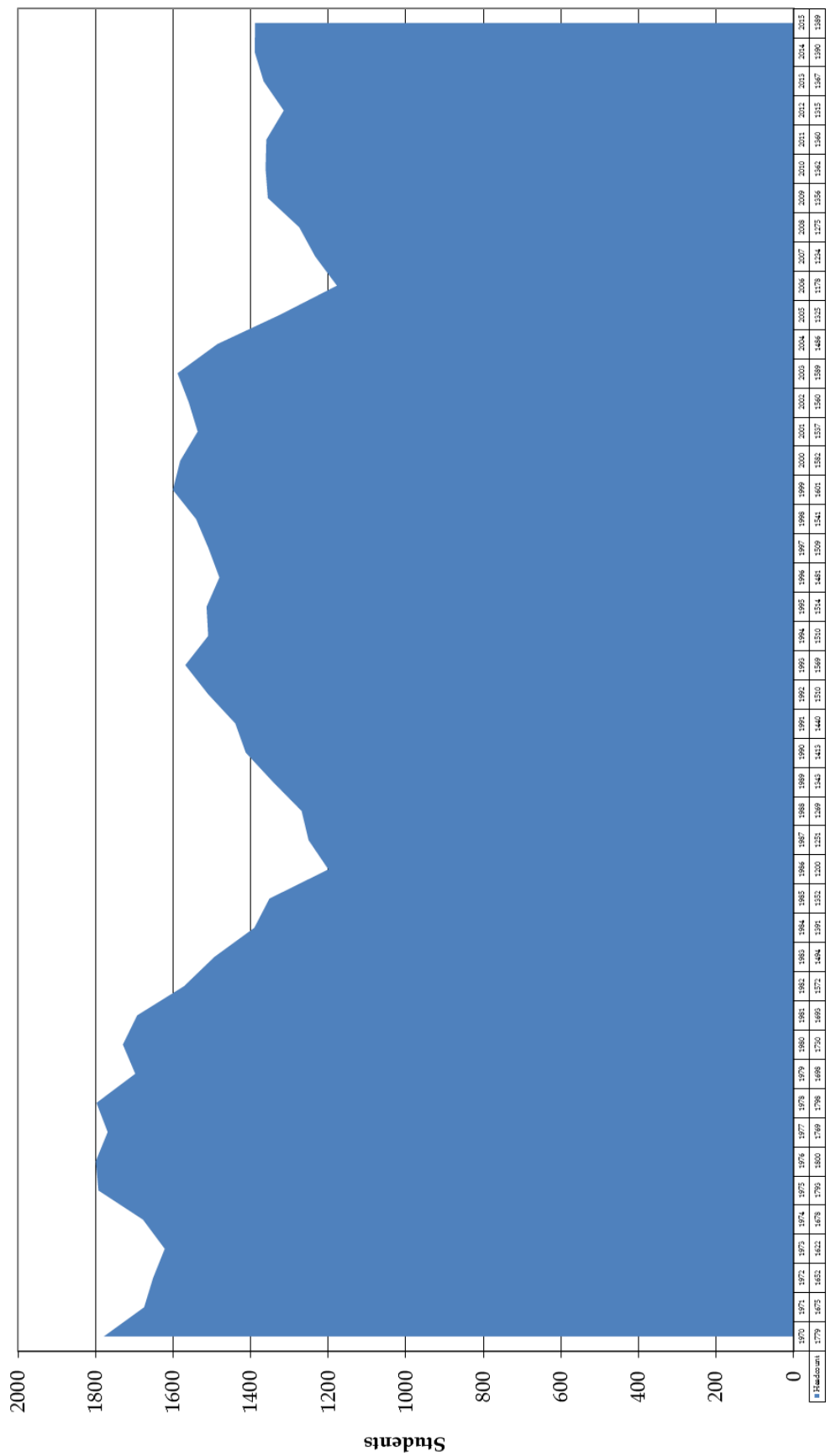
### The MSN Program had its first enrollment in Fall 2009.

#### The MFA in Creative Writing had its first enrollment in July 2011.

*Source: WVWC Student Records as of the Census date*



# West Virginia Wesleyan College Undergraduate Student Headcount Fall 1970 to Fall 2015



## Fall 2015 All Students by Gender, Race and Ethnicity

<b><u>Undergraduates</u></b>												
	International	Black non-Hispanic	Am. Indian or Alaskan	Asian	Pacific Islander/Haw	Hispanic	White, non-Hispanic	Race/eth. unknown	More than one	Total	Gender Percentage	
<b>Full Time Undergraduates</b>												
Men	51	86	2	5	2	23	428	6	14	617	45.3%	
Women	21	40	1	2	0	8	640	7	27	746	54.7%	
<b>Full-time Total</b>	<b>72</b>	<b>126</b>	<b>3</b>	<b>7</b>	<b>2</b>	<b>31</b>	<b>1068</b>	<b>13</b>	<b>41</b>	<b>1363</b>		
<b>Ethnic Percentages</b>	5.3%	9.2%	0.2%	0.5%	0.1%	2.3%	78.4%	1.0%	3.0%			
<b>Part Time Undergraduates</b>												
Men		2				1	13			16	61.5%	
Women							10			10	38.5%	
<b>Part-time Total</b>	<b>0</b>	<b>2</b>	<b>0</b>	<b>0</b>	<b>0</b>	<b>1</b>	<b>23</b>	<b>0</b>	<b>0</b>	<b>26</b>		
<b>Total Undergraduates</b>												
Men	56	88	2	0	2	24	441	6	14	633	45.6%	
Women	21	40	1	2	0	8	650	7	27	756	54.4%	
<b>Total</b>	<b>77</b>	<b>128</b>	<b>3</b>	<b>2</b>	<b>2</b>	<b>32</b>	<b>1091</b>	<b>13</b>	<b>41</b>	<b>1389</b>		
<b>Ethnic Percentages</b>	5.5%	9.2%	0.2%	0.1%	0.1%	2.3%	78.5%	0.9%	3.0%			
<b><u>Graduate Students</u></b>												
<b>Full Time Graduate Students</b>												
Men	1	1		1	1		22	1	1	28	24.3%	
Women		1		2		1	72	10	1	87	75.7%	
<b>Part-time Graduate Students</b>												
Men				1						1	7.1%	
Women		1					10	2		13	92.9%	
<b>Total Graduate Students</b>												
Men	1	1	0	2	1	0	22	1	1	29	22.5%	
Women	0	2	0	2	0	1	82	12	1	100	77.5%	
<b>Total</b>	<b>1</b>	<b>3</b>	<b>0</b>	<b>4</b>	<b>1</b>	<b>1</b>	<b>104</b>	<b>13</b>	<b>2</b>	<b>129</b>		
<b>Ethnic Percentages</b>	0.8%	2.3%	0.0%	3.1%	0.8%	0.8%	80.6%	10.1%	1.6%			
<b><u>Grand Total Students</u></b>												
Men	57	89	2	2	3	24	463	7	15	662	43.6%	
Women	21	42	1	4	0	9	732	19	28	856	56.4%	
<b>Total</b>	<b>78</b>	<b>131</b>	<b>3</b>	<b>6</b>	<b>3</b>	<b>33</b>	<b>1195</b>	<b>26</b>	<b>43</b>	<b>1518</b>		
<b>Ethnic Percentages</b>	5.1%	8.6%	0.2%	0.4%	0.2%	2.2%	78.7%	1.7%	2.8%			

### STATES AND COUNTRIES

West Virginia Wesleyan College has a commitment to providing a diverse environment for student to both learn in and live in. Fifty-eight percent of Wesleyan's student body are from WV. Thirty-seven percent of the student body consists of students from 37 other states and five percent are international students from the 20 different countries.

*Source: WVWC Student Records as of the Census date*

## Ten Year Full-time Undergraduate Ethnic and Gender and Basic Geographic Breakdown Summary

### % Fall Full-time Undergraduates Ethnic Summary

	2006	2007	2008	2009	2010	2011	2012	2013	2014	2015
Minority*	7.2%	5.0%	4.8%	12.4%	13.2%	14.6%	15.8%	13.5%	14.1%	15.4%
International**	3.6%	3.3%	3.2%	4.1%	4.2%	5.5%	4.8%	5.3%	5.0%	5.3%
White/Non-Hispanic	72.5%	62.9%	60.3%	82.0%	81.4%	78.4%	78.2%	79.9%	79.9%	78.4%
Unknown	16.8%	27.7%	29.8%	1.5%	1.2%	1.5%	1.2%	1.3%	1.0%	1.0%

\* Minority students include: Black Non-Hispanic, Am. Indian or Alaskan, Asian or Pacific Islander and Hispanic

\*\* International students include: students with the ethnic code of Nonresident Alien

### % Fall Full-time Undergraduates Gender Summary

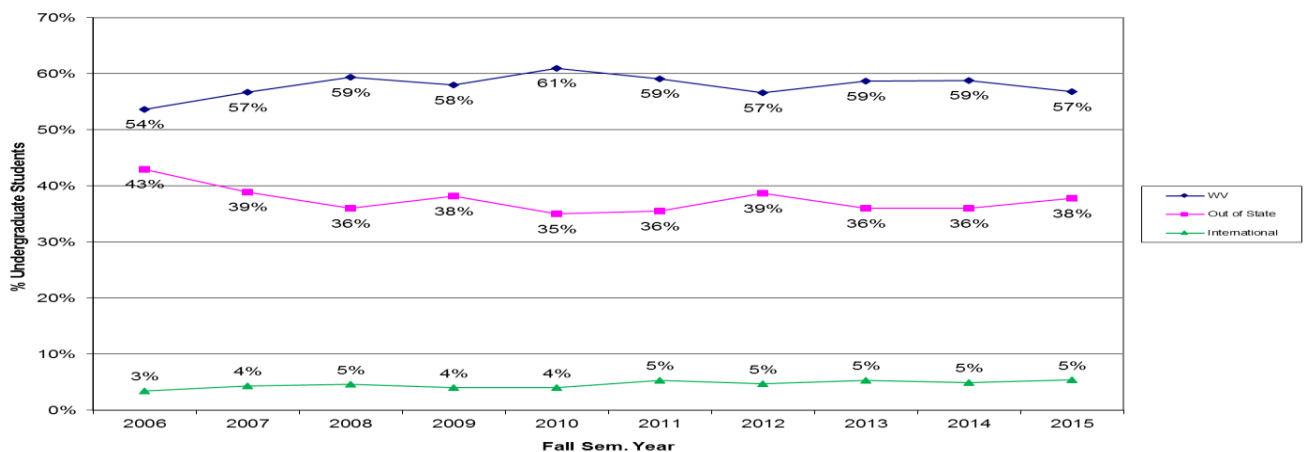
	2006	2007	2008	2009	2010	2011	2012	2013	2014	2015
Male	45.8%	46.2%	44.8%	45.6%	45.5%	46.7%	46.0%	46.7%	45.2%	45.3%
Female	54.2%	53.8%	55.2%	54.4%	54.5%	53.3%	54.0%	53.3%	54.8%	54.7%

### % Fall Undergraduates Geographic Summary

	2006	2007	2008	2009	2010	2011	2012	2013	2014	2015
WV	54%	57%	59%	58%	61%	59%	57%	59%	59%	57%
Out of State	43%	39%	36%	38%	35%	36%	39%	36%	36%	38%
International	3%	4%	5%	4%	4%	5%	5%	5%	5%	5%
Undergrad Head Count	1,177	1,235	1,275	1,356	1,362	1,360	1,315	1,367	1,390	1,389

Source: WVWC Student Records as of the Census date

**Fall Undergraduate Headcount Geographic Summary  
Ten Year History**



## Declared Academic First and Second Majors by School- Fall 2015

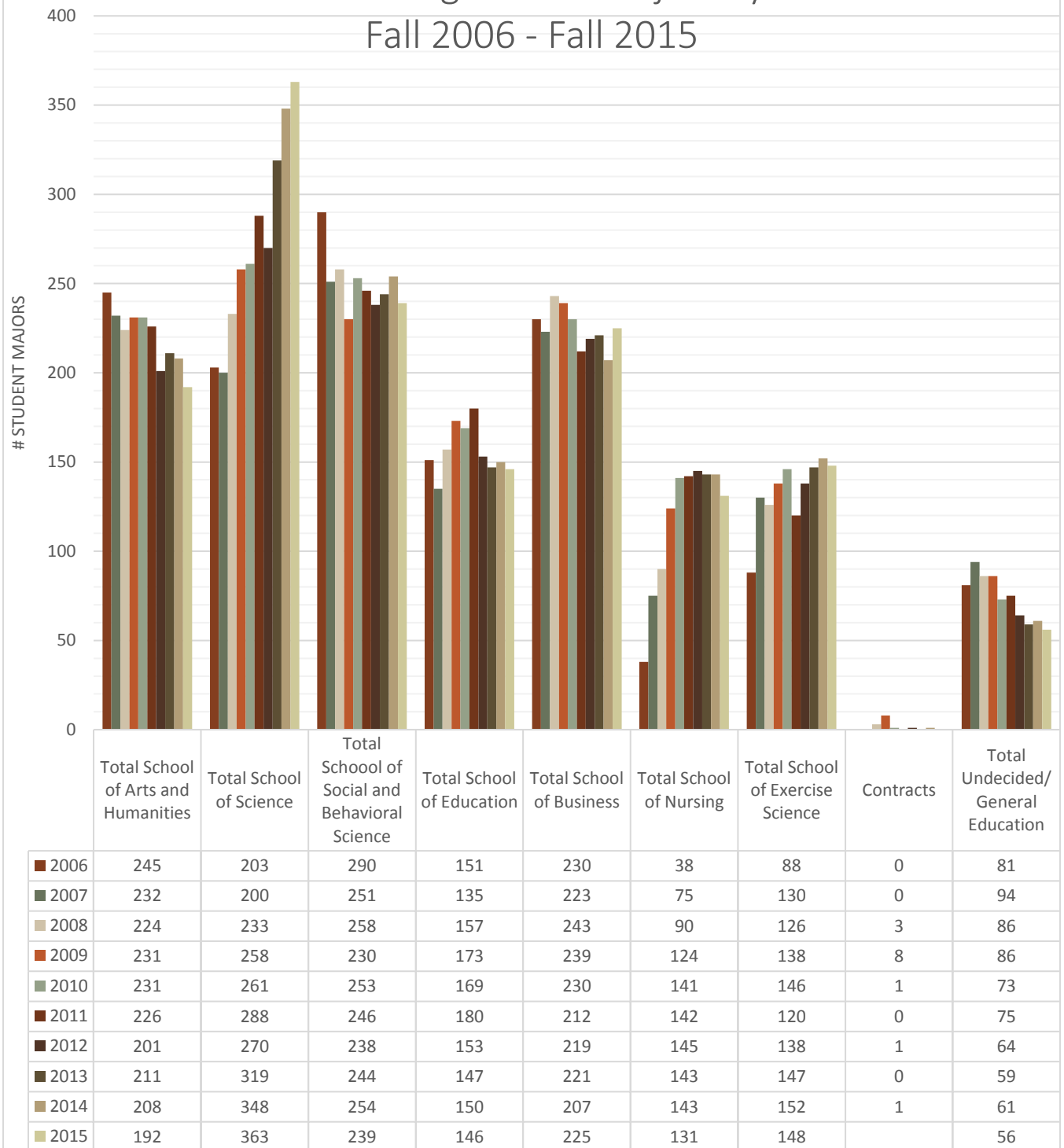
		2015				Previous Most Recent 5 Years			
		Majors	2nd Majors	Total Majors	% of Total	Majors	2nd Majors	Total Majors	% of Total
<b>School of Fine Arts and Humanities</b>									
		Majors	2nd Majors	Total Majors	% of Total	Majors	2nd Majors	Total Majors	% of Total
<b>Art Total</b>		<b>37</b>	<b>10</b>	<b>47</b>	<b>3.1%</b>	<b>202</b>	<b>35</b>	<b>237</b>	<b>3.2%</b>
	Pre Art Therapy	4	3	7	0.5%	16	10	26	0.3%
	Education			0	0.0%	0	0	0	0.0%
	Graphic Design	21		21	1.4%	114	0	114	1.5%
	Painting/Drawing	1		1	0.1%	21	0	21	0.3%
	Studio	6	7	13	0.9%	10	1	11	0.1%
	Ceramics			0	0.0%	0	0	0	0.0%
	Intermedia	1		1	0.1%	23	4	27	0.4%
	Photography	4		4	0.3%	18	0	18	0.2%
<b>Arts Administration</b>		<b>7</b>	<b>1</b>	<b>8</b>	<b>0.5%</b>	<b>28</b>	<b>3</b>	<b>31</b>	<b>0.4%</b>
	AA Art	2		2	0.1%	5	1	6	0.1%
	AA Music	4		4	0.3%	18	1	19	0.3%
	AA Theatre	1		1	0.1%	5	1	6	0.1%
<b>Christian Education (Now part of Religious Studies)</b>		<b>0</b>	<b>0</b>	<b>0</b>	<b>0.0%</b>	<b>22</b>	<b>2</b>	<b>24</b>	<b>0.3%</b>
<b>English Total</b>		<b>22</b>	<b>6</b>	<b>28</b>	<b>1.9%</b>	<b>166</b>	<b>54</b>	<b>220</b>	<b>3.0%</b>
	English	8		8	0.5%	38	54	92	1.2%
	Literature	4		4	0.3%	27	0	27	0.4%
	Writing	10		10	0.7%	101	0	101	1.4%
<b>Gender Studies</b>		<b>2</b>	<b>8</b>	<b>10</b>	<b>0.7%</b>	<b>6</b>	<b>34</b>	<b>40</b>	<b>0.5%</b>
<b>History</b>		<b>13</b>	<b>9</b>	<b>22</b>	<b>1.5%</b>	<b>87</b>	<b>49</b>	<b>136</b>	<b>1.8%</b>
<b>International Studies</b>		<b>4</b>	<b>3</b>	<b>7</b>	<b>0.5%</b>	<b>36</b>	<b>12</b>	<b>48</b>	<b>0.6%</b>
<b>Music: Total</b>		<b>35</b>	<b>3</b>	<b>38</b>	<b>2.5%</b>	<b>143</b>	<b>23</b>	<b>166</b>	<b>2.2%</b>
	Music	13	3	16	1.1%	54	20	74	1.0%
	Education	22		22	1.5%	89	3	92	1.2%
<b>Philosophy</b>		<b>3</b>	<b>5</b>	<b>8</b>	<b>0.5%</b>	<b>6</b>	<b>22</b>	<b>28</b>	<b>0.4%</b>
<b>Philosophy and Religion</b>		<b>1</b>		<b>1</b>	<b>0.1%</b>	<b>0</b>	<b>0</b>	<b>0</b>	<b>0.0%</b>
<b>Religion/Religious Studies</b>		<b>6</b>	<b>1</b>	<b>7</b>	<b>0.5%</b>	<b>13</b>	<b>8</b>	<b>21</b>	<b>0.3%</b>
<b>Theatre Arts: Total</b>		<b>16</b>	<b>0</b>	<b>16</b>	<b>1.1%</b>	<b>109</b>	<b>17</b>	<b>126</b>	<b>1.7%</b>
	Musical Theatre	11		11	0.7%	51	8	59	0.8%
	Theatre Arts	4		4	0.3%	58	8	66	0.9%
	Pre Drama Therapy	1		1	0.1%	0	0	0	
<b>Total School of Arts and Humanities</b>		<b>146</b>	<b>46</b>	<b>192</b>	<b>12.8%</b>	<b>818</b>	<b>259</b>	<b>1077</b>	<b>14.5%</b>

		2015				Previous Most Recent 5 Years			
<b>School of Science</b>									
		Majors	2nd Majors	Total Majors	% of Total	Majors	2nd Majors	Total Majors	% of Total
Biology		102		102	6.8%	495	14	509	6.8%
Chemistry		24	4	28	1.9%	227	30	257	3.5%
Chemical Hygiene		3		3	0.2%	7	0	7	0.1%
Bio Chemistry		50	1	51	3.4%	64	0	64	0.9%
Computer Info. Science		6		6	0.4%	20	7	27	0.4%
Computer Science		25	1	26	1.7%	80	4	84	1.1%
Engineering 3/2 Program		17		17	1.1%	71	8	79	1.1%
Environmental Science		9	6	15	1.0%	37	32	69	0.9%
Mathematics		8		8	0.5%	6	0	6	
Pharmacy		33		33	2.2%	187	1	188	2.5%
Physics		55	3	58	3.9%	180	7	187	2.5%
Geo Physics		16		16	1.1%	9	0	9	0.1%
<b>Total School of Science</b>		<b>348</b>	<b>15</b>	<b>363</b>	<b>24.2%</b>	<b>1383</b>	<b>103</b>	<b>1486</b>	<b>20.0%</b>
<b>School of Social Science</b>									
		Majors	2nd Majors	Total Majors	% of Total	Majors	2nd Majors	Total Majors	% of Total
Communication Studies		32	3	35	2.3%	197	23	220	3.0%
	Communication	19	1	20	1.3%	108	14	122	1.6%
	Public Relations	9	2	11	0.7%	85	9	94	1.3%
	Media Studies	4		4	0.3%	4	0	4	0.1%
Criminal Justice		64	10	74	4.9%	334	20	354	4.8%
Political Science		27	3	30	2.0%	122	28	150	2.0%
Psychology		81	8	89	5.9%	399	54	453	6.1%
Sociology		5	4	9	0.6%	33	26	59	0.8%
Social Justice		2		2	0.1%	2	1	3	0.0%
<b>Total School of Social Science</b>		<b>211</b>	<b>28</b>	<b>239</b>	<b>15.9%</b>	<b>1087</b>	<b>151</b>	<b>1239</b>	<b>16.6%</b>
<b>School of Business</b>									
Accounting		44		44	2.9%	244	7	251	3.7%
Finance				0	0.0%	0	0	0	0.0%
Business Admin		63	3	66	4.4%	354	23	377	5.4%
Management		35		35	2.3%	111	5	116	1.6%
Marketing		23	1	24	1.6%	100	3	103	1.4%
International Business		4	1	5	0.3%	68	3	71	1.1%
Sport Business		34		34	2.3%	76	1	77	0.7%
Economics		10	7	17	1.1%	48	46	94	1.3%
<b>Total School of Business</b>		<b>213</b>	<b>12</b>	<b>225</b>	<b>15.0%</b>	<b>1001</b>	<b>88</b>	<b>1089</b>	<b>14.6%</b>
<b>School of Education</b>									
		Majors	2nd Majors	Total Majors	% of Total	Majors	2nd Majors	Total Majors	% of Total
Elementary		77		77	5.1%	407	4	411	5.5%
Secondary		63	6	69	4.6%	372	16	388	5.2%
<b>Total School of Education</b>		<b>140</b>	<b>6</b>	<b>146</b>	<b>9.7%</b>	<b>779</b>	<b>20</b>	<b>799</b>	<b>10.7%</b>

	2015				Previous Most Recent 5 Years			
<b>School of Exercise Science</b>								
	Majors	2nd Majors	Total Majors	% of Total	Majors	2nd Majors	Total Majors	% of Total
Physical Education	2	3	5	0.3%	9	16	25	0.3%
Exercise Science	94	1	95	6.3%	418	8	426	5.7%
Athletic Training	48		48	3.2%	255	0	255	3.4%
<b>Total School of Exercise Science</b>	<b>144</b>	<b>4</b>	<b>148</b>	<b>9.9%</b>	<b>682</b>	<b>24</b>	<b>706</b>	<b>9.5%</b>
<b>School of Nursing</b>								
	Majors	2nd Majors	Total Majors	% of Total	Majors	2nd Majors	Total Majors	% of Total
<b>Nursing</b>	93	0	93	6.2%	0	0	0	
	38	0	38	2.5%	0	0	0	
<b>Total School of Nursing</b>	<b>131</b>	<b>0</b>	<b>131</b>	<b>8.7%</b>	<b>709</b>	<b>5</b>	<b>714</b>	<b>9.6%</b>
	Majors	2nd Majors	Total Majors	% of Total	Majors	2nd Majors	Total Majors	% of Total
<b>Contract Major</b>	<b>0</b>		<b>0</b>	<b>0.1%</b>	<b>3</b>	<b>0</b>	<b>3</b>	<b>0.1%</b>
<b>Undeclared/Undecided</b>	<b>56</b>		<b>56</b>	<b>4.0%</b>	<b>332</b>	<b>0</b>	<b>332</b>	<b>4.8%</b>
<b>Total Undergraduate Declared Majors</b>	<b>1389</b>	<b>111</b>	<b>1500</b>	<b>100.0%</b>	<b>6794</b>	<b>650</b>	<b>7445</b>	<b>100.0%</b>

Source: WVWC Student Records as of the Census date

## Declared Undergraduate Majors by School Fall 2006 - Fall 2015



Source: WVWC Student Records as of the Census date

## West Virginia Wesleyan College

### Student Organizations

#### (In Alphabetical Order)

4-H Club	Delta Mu Delta	Phi Sigma Tau
Alpha Delta Pi	Engineering/Physics Club	Pre-Law
Alpha Gamma Delta	Freshman Council	Psi Chi
Alpha Lambda Delta	Gamma Sigma Alpha	Residence Hall Council
Alpha Phi Alpha	Green Club	SADD
Alpha Phi Omega	Hallom Math Honorary	Senior Class
Alpha Psi Omega	Honors Student Organization	SIFE
Alpha Sigma Phi	Interfraternity Council	Sigma Alpha Iota
	International Student Organization	
Alpha Xi Delta	Intervarsity Christian Fellowship	Sigma Tau Delta
Awards and Elections	Jazz Ensemble	Sigma Theta Epsilon
Beta Beta Beta		Sigma Theta Tau
Black Business Student Assn	Junior Class	SNOW
Black Student Union	Kappa Delta Pi	Sociology Club
Bonner Scholars	Kappa Phi	Sophomore Class
Campus Activities Board	Lambda Pi Eta	Special Activities Committee
Campus Crusade	Loveshine	Standard Deviators
Catholic Campus Ministry	Mortar Board	Student Art League
Chapel Choir	Murmurmontis	Student Athletic Trainers' Club
Cheerleading	Nurses Christian Fellowship	Student Education Association
Chi Phi	Omega Psi Phi Fraternity	Theta Chi
Christian Life Council	Omicron Delta Epsilon	Theta Xi
		United Methodist Student Movement
Circle K	Omicron Delta Kappa	Wesleyan Ambassadors
College Republicans	Order of Omega	Wesleyan Singers
Community Council	PanHellenic Association	Wesleyan's Lacrosse
Computer Club	Peace with Justice Com	WVWC-FM 92
Concentus Vocum	Pharos	Young Democrats
Concert Band	Phi Kappa Phi	Zeta Tau Alpha
Concert Chorale	Phi Mu Alpha Sinfonia	

Source: WVWC Web page 07-2014



## All Student Athletes by Scholarship Status

Sports	All Student Fall 2015				All Student Fall 2014				All Student Fall 2013			
	Number of Student Athletes	Scholarship Student Athletes	Walk on Student Athletes	% Scholarship	Number of Student Athletes	Scholarship Student Athletes	Walk on Student Athletes	% Scholarship	Number of Student Athletes	Scholarship Student Athletes	Walk on Student Athletes	% Scholarship
Baseball	49	27	22	55%	56	26	30	46%	61	25	36	41%
M. Basketball	21	13	8	62%	19	11	8	58%	14	10	4	71%
M. Cross Country and Track*	71	35	36	49%	71	32	39	45%	74	29	45	39%
Football	123	58	65	47%	123	62	61	50%	110	41	69	37%
Golf	10	4	6	40%	12	5	7	42%	11	6	5	55%
M. Soccer	46	18	28	39%	36	16	20	44%	33	18	15	55%
M. Swimming	16	7	9	44%	11	4	7	36%	14	5	9	36%
M. Tennis	14	6	8	43%	15	7	8	47%	12	5	7	42%
<b>Totals</b>	<b>350</b>	<b>168</b>	<b>182</b>	<b>48%</b>	<b>343</b>	<b>163</b>	<b>180</b>	<b>48%</b>	<b>329</b>	<b>139</b>	<b>190</b>	<b>42%</b>
% of FT Undergraduate Men	57.0%	27.4%	29.6%		55.9%	26.5%	29.3%		52.4%	22.1%	30.3%	
# of FT Undergraduate Men	614				614				628			
<b>Women's Programs</b>												
W. Basketball	27	17	10	63%	23	17	6	74%	17	13	4	76%
W. Cross Country and Track*	61	25	36	41%	57	25	32	44%	45	35	10	78%
W. Lacrosse	24	14	10	58%	29	10	19	34%	27	11	16	41%
W. Soccer	42	26	16	62%	42	30	12	71%	38	27	11	71%
Softball	41	13	28	32%	35	14	21	40%	31	14	17	45%
W. Swimming	22	9	13	41%	21	10	11	48%	16	9	7	56%
W. Tennis	9	6	3	67%	9	6	3	67%	8	5	3	63%
Volleyball	30	22	8	73%	31	22	9	71%	28	25	3	89%
W. Golf	6	3	3	50%	5	4	1	80%	7	5	2	71%
<b>Totals</b>	<b>262</b>	<b>135</b>	<b>127</b>	<b>52%</b>	<b>252</b>	<b>138</b>	<b>114</b>	<b>55%</b>	<b>217</b>	<b>144</b>	<b>73</b>	<b>66%</b>
% FT Undergraduate Women	35.0%	18.0%	17.0%		33.9%	18.6%	15.3%		30.3%	20.1%	10.2%	
# of FT Undergraduate Women	749				743				717			
	487				491				500			
<b>All Student Athlete Totals</b>	<b>612</b>	<b>303</b>	<b>309</b>	<b>50%</b>	<b>595</b>	<b>301</b>	<b>294</b>	<b>51%</b>	<b>546</b>	<b>283</b>	<b>263</b>	<b>52%</b>
% of Total Students	44.9%	22.2%	22.7%		43.8%	22.2%	21.7%		40.6%	21.0%	19.6%	
# Total FT Students	1363				1357				1345			

\* This number does not include those athlete who also participated in another sport during the year.

Source: WVWC Student Records as of the census date each year

# Student Outcomes



## Institutional Yearly Retention Rates

### First-Time Full-time Freshmen Rate

Fall to Fall Year of Retention*	Fall 05	Fall 06	Fall 07	Fall 08	Fall 09	Fall 10	Fall 11	Fall 12	Fall 13	Fall 14	Fall 2015 Goal	Previous 3 yr. Ave.	Strategic Planning Long Term Goal
	to Fall 06	to Fall 07	to Fall 08	to Fall 09	to Fall 10	to Fall 11	to Fall 12	to Fall 13	to Fall 14	to Fall 15			
Freshmen Cohort for First Year Retention	307	291	401	382	399	371	405	404	471	415			
Freshmen to Sophomore (Year 1)	70.0%	75.3%	73.8%	74.6%	69.9%	67.3%	64.0%	65.1%	73.0%	71.8%	73.9%	67.7%	75%
Sophomore to Junior (Year 2)	83.1%	88.3%	83.03%	87.5%	82.8%	80.0%	82.2%	87.3%	88.6%	82.3%	86.2%	86.9%	85%
Junior to Senior (Year 3)	92.7%	95.4%	91.6%	96.1%	94.2%	96.6%	91.9%	92.4%	90.2%	88.9%**	91.3%	91.7%	95%

\* These numbers only reflect retention for students who originally entered WVWC as First-time Full-time Freshmen  
 \*\* If 7 2014-15 Graduates are included in the rate the Junior to Senior retention/completion rate is 91.9%

### Transfer Student Retention Rates

Fall to Fall Year of Retention*	Fall 05	Fall 06	Fall 07	Fall 08	Fall 09	Fall 10	Fall 11	Fall 12	Fall 2013	Fall 2014
	to Fall 06	to Fall 07	to Fall 08	to Fall 09	to Fall 10	to Fall 11	to Fall 12	to Fall 13	to Fall 2014	to Fall 2015**
Transfer Entering Cohort	34	39	55	42	60	32	60	61	39	40
(Year 1)	79.2%	77.5%	70.9%	87.2%	80.0%	78.1%	60.0%	54.1%	74.4%	81.5%
(Year 2)	44.8%	42.1%	67.74%	59.0%	67.6%	64.6%	60.0%	77.8%	54.5%	79.3%
(Year 3)	47.1%	69.2%	37.5%	38.1%	30.4%	39.1%	38.7%	15.4%	21.4%	5.8%

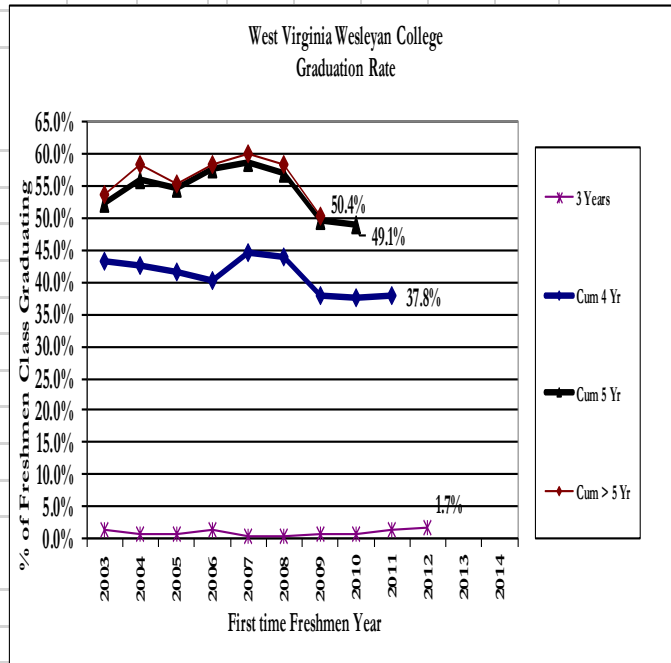
\* These numbers only reflect retention for students who originally entered WVWC as Transfer Students. Student who have readmitted to the institution are included in their original cohort for retention purposes.  
 \*\* If 2014-15 Graduates and are included in the rates, retention/completion rate is first year 78%, second year 90%, 88.5%

*Actual Data is as of Census Date each year*

West Virginia Wesleyan College  
 First Time Full Time Freshmen  
 Yearly Retention and Graduation Rates  
 2004 to Present

First-Time Full-time Freshmen and Year Entering College	Returning for:								Graduating in:				Total	Total Grads %	
	Year 2	%	Year 3	%	Year 4	%	Year 5	Year 6	3 yrs or less	4 yrs	5 yrs	> 5			
2004	348	261	75.0%	214	61.5%	207	59.5%	50	10	2	146	47	8	203	58.3%
2005	307	215	70.0%	190	61.9%	169	55.0%	42	2	2	126	40	2	170	55.4%
2006	291	219	75.3%	181	62.2%	174	59.8%	51	0	4	113	51	2	170	58.4%
2007	401	296	73.8%	259	64.6%	244	60.8%	53	7	1	178	56	6	241	60.1%
2008	382	285	74.6%	236	61.8%	228	59.7%	46	4	1	167	50	5	223	58.4%
2009	399	279	69.9%	223	55.9%	206	51.6%	51	2	3	148	47	3	201	50.4%
2010	371	250	67.4%	211	56.9%	196	52.8%	41	5	3	136	43			
2011	405	259	64.0%	225	55.6%	206	50.9%	36		5	148				
2012	404	263	65.1%	234	57.9%	209	51.7%			7	150				
2013	471	344	73.0%	283	60.1%										
2014	415	298	71.8%												
2015	392														
Recent 3 Yr Average	393	257	67.7%	220	56.8%	210	51.7%	46	4	4	150	51	4	211	59.0%

First Time Freshmen Year	Graduation Rates					
	3 Years	Cum 4 Yr	5 years	Cum 5 Yr	> 5	Cum > 5 Yr
2004	0.6%	42.5%	13.5%	56.0%	2.3%	58.3%
2005	0.7%	41.7%	13.0%	54.7%	0.7%	55.4%
2006	1.4%	40.2%	17.5%	57.7%	0.7%	58.4%
2007	0.2%	44.6%	14.0%	58.6%	1.5%	60.1%
2008	0.3%	44.0%	13.1%	57.1%	1.3%	58.4%
2009	0.8%	37.8%	11.8%	49.6%	0.8%	50.4%
2010	0.8%	37.5%	11.6%	49.1%		
2011	1.2%	37.8%				
2012	1.7%					
2013						
Recent 3 Yr Average	0.9%	39.8%	12.9%	55.1%	1.2%	59.0%



Source: WVWC Student records as of the census date each year

## Degrees Awarded by Major Field of Study

		2015				5 year Total			
		July 1, 2014 through June 30, 2015				July 1, 2010 through June 30, 2014			
Major	Division	Majors	Second or third Majors	Total Majors	%of All	Majors	Second or third Majors	Total Majors	%of All
<b>Fine Arts and Humanities</b>									
<b>Art Total</b>		<b>12</b>		<b>12</b>	<b>4.3%</b>	<b>39</b>	<b>6</b>	<b>45</b>	<b>3.3%</b>
	Education			0	0.0%	0	0	0	
	Graphic Design	7		7	2.5%	23	0	23	
	Painting/Drawing	3		3	1.1%	8	0	8	
	Studio			0	0.0%	0	0	0	
	Ceramics			0	0.0%	0	0	0	
	Intermedia			0	0.0%	2	0	2	
	Photography	2				1	0	0	
	Pre Art Therapy			0	0.0%	5	2	7	
<b>Art Administration</b>		<b>3</b>		<b>3</b>	<b>1.1%</b>	<b>9</b>	<b>1</b>	<b>10</b>	<b>0.7%</b>
<b>Theatre Arts</b>		<b>2</b>	<b>1</b>	<b>3</b>	<b>1.1%</b>	<b>11</b>	<b>2</b>	<b>13</b>	<b>0.9%</b>
<b>English: Total</b>		<b>11</b>	<b>4</b>	<b>15</b>	<b>5.3%</b>	<b>47</b>	<b>15</b>	<b>62</b>	<b>4.5%</b>
	Education			0	0.0%	0	0	0	
	Literature	2		2	0.7%	16	0	16	
	Writing	9		9	3.2%	31	0	31	
<b>Gender Studies</b>		<b>2</b>	<b>5</b>	<b>7</b>	<b>2.5%</b>	<b>2</b>	<b>5</b>	<b>7</b>	<b>0.5%</b>
<b>History</b>		<b>6</b>	<b>3</b>	<b>9</b>	<b>3.2%</b>	<b>41</b>	<b>6</b>	<b>47</b>	<b>3.4%</b>
<b>Music: Total</b>		<b>6</b>	<b>1</b>	<b>7</b>	<b>2.5%</b>	<b>24</b>	<b>2</b>	<b>26</b>	<b>1.9%</b>
	Music:	4	1	5	1.8%	11	2	13	
	Education	2		2	0.7%	13	0	13	
<b>Music Theatre</b>		<b>0</b>		<b>0</b>	<b>0.0%</b>	<b>8</b>	<b>1</b>	<b>9</b>	<b>0.7%</b>
<b>Philosophy</b>		<b>1</b>		<b>1</b>	<b>0.4%</b>	<b>2</b>	<b>7</b>	<b>9</b>	<b>0.7%</b>
<b>Philosophy and Religion</b>		<b>0</b>		<b>0</b>	<b>0.0%</b>	<b>2</b>	<b>0</b>	<b>2</b>	<b>0.1%</b>
<b>Religion/Religious Studies</b>		<b>0</b>		<b>0</b>	<b>0.0%</b>	<b>7</b>	<b>1</b>	<b>8</b>	<b>0.6%</b>
<b>International Studies</b>		<b>2</b>	<b>1</b>	<b>3</b>	<b>1.1%</b>	<b>10</b>	<b>3</b>	<b>13</b>	<b>0.9%</b>
<b>Christian Education</b>		<b>0</b>		<b>0</b>	<b>0.0%</b>	<b>8</b>	<b>1</b>	<b>9</b>	<b>0.7%</b>
<b>Total Arts and Humanities</b>		<b>45</b>	<b>15</b>	<b>60</b>	<b>21.4%</b>	<b>210</b>	<b>50</b>	<b>260</b>	<b>18.8%</b>

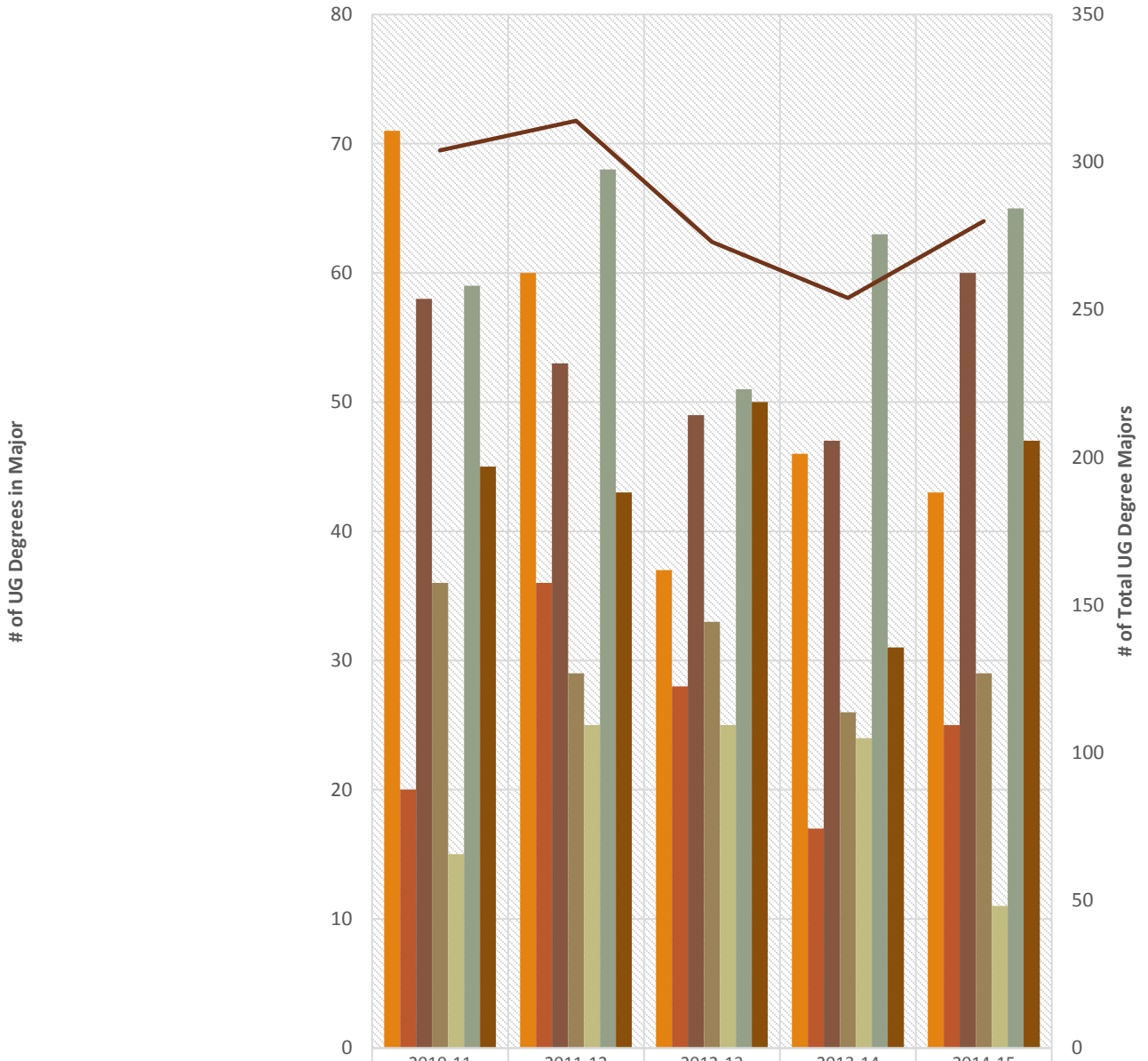
		2015				5 year Total			
		July 1, 2014 through June 30, 2015				July 1, 2010 through June 30, 2014			
Major		Majors	Second or third Majors	Total Majors	%of All	Majors	Second or third Majors	Total Majors	%of All
<b>School of Science</b>									
Biology		13		13	4.6%	63	0	63	4.6%
Biochemistry		2		2	0.7%	0	0	0	
Chemistry		8		8	2.8%	57	2	59	4.3%
Material Chemistry		0		0	0.0%	1	0	1	0.1%
Computer Info. Science		1	1	2	0.7%	6	1	7	0.5%
Computer Science		0		0	0.0%	10	0	10	0.7%
Engineering Physics		0		0	0.0%	0	0	0	0.0%
Environmental Science/Studies		4		4	1.4%	12	1	13	0.9%
Mathematics		3		3	1.1%	11	5	16	1.2%
Physics		15		15	5.3%	33	0	33	2.4%
<b>Total Science</b>		<b>46</b>	<b>1</b>	<b>47</b>	<b>16.7%</b>	<b>193</b>	<b>9</b>	<b>202</b>	<b>14.6%</b>
<b>School of Social Science</b>									
Communication Studies		5	1	6	2.1%	27	1	28	2.0%
Public Relations		6		6	2.1%	26	0	26	1.9%
Criminal Justice		12	2	14	5.0%	62	3	65	4.7%
Political Science		5	1	6	2.1%	29	6	35	2.5%
Psychology		25	1	26	9.3%	100	6	106	7.7%
Sociology		3	4	7	2.5%	12	4	16	1.2%
Social Justice							0		
<b>Total Social Science</b>		<b>56</b>	<b>9</b>	<b>65</b>	<b>23.1%</b>	<b>256</b>	<b>20</b>	<b>276</b>	<b>20.0%</b>
<b>School of Business</b>									
<b>Business: Total</b>		<b>35</b>	<b>2</b>	<b>37</b>	<b>13.2%</b>	<b>232</b>	<b>6</b>	<b>238</b>	<b>17.2%</b>
Accounting		10		10	3.6%	70	0	70	
Finance (Discontinued)				0	0.0%	1	0	1	
Business Administration		6	1	7	2.5%	65	4	69	
International Business		1		1	0.4%	21	1	22	
Management		5	1	6	2.1%	42	1	43	
Marketing		7		7	2.5%	31	0	31	
Sports Business		6		6	2.1%	0	0	0	
<b>Economics</b>		<b>2</b>	<b>4</b>	<b>6</b>	<b>2.1%</b>	<b>13</b>	<b>15</b>	<b>28</b>	<b>2.0%</b>
<b>Total School of Business</b>		<b>37</b>	<b>6</b>	<b>43</b>	<b>15.3%</b>	<b>245</b>	<b>21</b>	<b>266</b>	<b>19.2%</b>
<b>School of Education</b>									
Elementary		12		12	4.3%	74	2	76	

Secondary	12	1	13	4.6%	40	7	47	
<b>Education: Total</b>	<b>24</b>	<b>1</b>	<b>25</b>	<b>8.9%</b>	<b>114</b>	<b>9</b>	<b>123</b>	<b>8.9%</b>

		2015				5 year Total			
		July 1, 2014 through June 30, 2015				July 1, 2010 through June 30, 2014			
Major		Majors	Second or third Majors	Total Majors	% of All	Majors	Second or third Majors	Total Majors	% of All
<b>School of Exercise Science</b>									
	Physical Education:	1	2	3	1.1%	16	10	26	1.9%
	Exercise Science	22		22	7.8%	93	0	93	6.7%
	Athletic Training	4		4	1.4%	29	0	29	2.1%
<b>Exercise Science Total</b>		<b>27</b>	<b>2</b>	<b>29</b>	<b>10.3%</b>	<b>138</b>	<b>10</b>	<b>148</b>	<b>10.7%</b>
<b>School of Nursing</b>									
		11		11	3.9%	103	0	103	7.5%
<b>Contract Major</b>									
		1		1	0.4%	4	0	4	0.3%
<b>Total Undergraduate Student Majors</b>		<b>247</b>	<b>34</b>	<b>281</b>	<b>100%</b>	<b>1263</b>	<b>119</b>	<b>1382</b>	<b>100%</b>
<b>Number of Students with two or more Majors</b>				<b>34</b>	13.8%			<b>119</b>	9.4%
<b>Number Undergraduate Degrees Awarded</b>				<b>247</b>				<b>1263</b>	
<b>Master's Degrees Earned</b>									
<b>5 year Undergraduate/MBA</b>		<b>7</b>	<b>7 Broken into specialties above</b>			<b>63</b>	<b>58 Broken into specialties above</b>		
<b>5 year Undergraduate/MED</b>		<b>1</b>	<b>1 Broken into specialties above</b>			<b>22</b>	<b>22 Broken into specialties above</b>		
<b>Master of Business Administration</b>		<b>13</b>	<b>Includes 5 year MBA</b>			<b>113</b>	<b>Includes 5 year MBA</b>		
<b>Master of Education</b>		<b>6</b>	<b>Includes 5 year MED</b>			<b>56</b>	<b>Includes 5 year MED</b>		
<b>Master of Science in Athletic Training</b>		<b>4</b>				<b>28</b>			
<b>Master of Science in Nursing</b>		<b>5</b>				<b>10</b>	<b>(5 Years of data)</b>		
<b>Master of Fine Arts</b>		<b>7</b>				<b>10</b>	<b>1 Year of data</b>		
<b>Total Masters Degrees Earned</b>		<b>35</b>				<b>217</b>			

Source: WVWC Degrees Earned Records

## Undergraduate Graduating Degree Majors 2010-11 to 2014-15

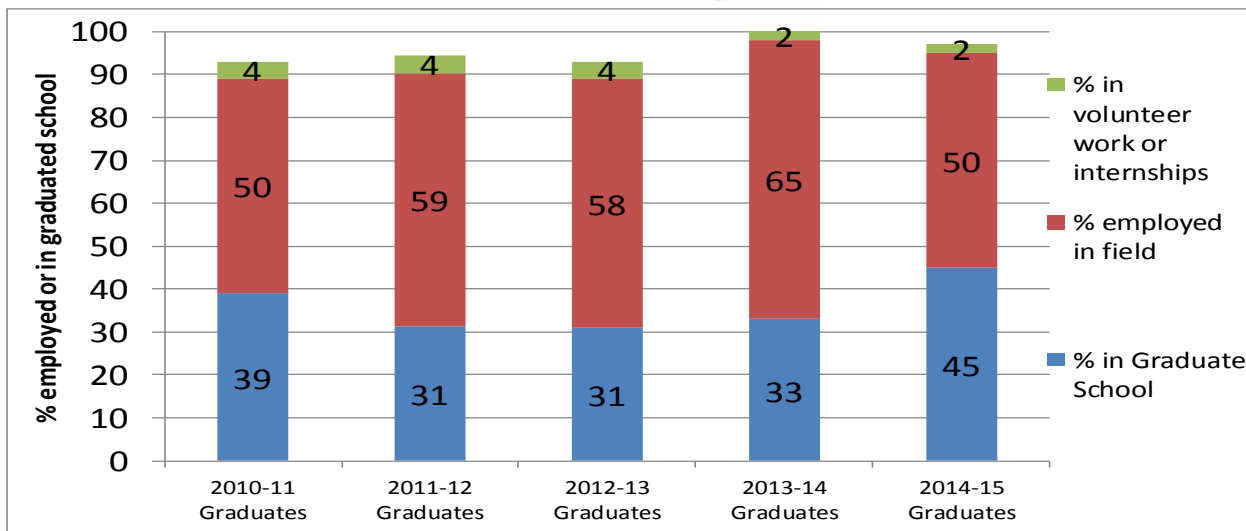


	2010-11	2011-12	2012-13	2013-14	2014-15
School of Business	71	60	37	46	43
School of Education	20	36	28	17	25
School of Fine Arts and Humanities	58	53	49	47	60
School of Exercise Science	36	29	33	26	29
School of Nursing	15	25	25	24	11
School of Social and Behavior Sciences	59	68	51	63	65
School of Science	45	43	50	31	47
Total UG Majors	304	314	273	254	280



## 2015-2016 Placement Report

### Student Success After Graduation Graduate Outcome Statistics as of Six Months After Graduation Goal: 90% or higher



% of graduating class with information 73%    % of graduating class with information 75%    % of graduating class with information 64%    % of graduating class with information 70%    % of graduating class with information 70%

Source: WVWC Career Services

UG DEGREE HOLDERS ENROLLED IN GRADUATE PROGRAMS BY TYPE		PERCENTAGES BASED ON TOTAL # IN GRAD SCHOOL – 79			
Medical & Health Related	16	20 %	Law School	2	2.5 %
Business School	12	15 %	Arts & Sciences	<u>41</u>	<u>52.5 %</u>
Education	8	10 %		79	100.0 %

#### Partial list of Graduate Schools attending:

Adler School of Professional Psychology, Belmont University, Duke University, Drew Theological School, Indiana University, Lynn University, Marshal University, Penn State University, Radford University, Stanford University, St. George’s University, St John’s University, University of Sioux Falls, University of Southern California, University of Western Florida, Vanderbilt University, Wesley Theological Seminary, West Virginia School of Osteopathic Medicine West Virginia University

#### Partial List of Employers:

Alpha Gamma Delta, AmeriCorps, Ann Taylor Loft, Appalachian Reading Center, Apple Hill Playhouse, Arizona Diamondbacks Baseball, Arnett, Carnegie Science Center, Earnst & Young, Foster, Toothman CPAs, Design Studio, GIECO, Kaufmann, Rossin, Inc., Johns Hopkins Hospital Knob Hill Winery, Lakin Correctional Center, Mylan Pharmaceuticals, National Children’s Hospital, New York Observer, Packer Thomas, CPAs, Powerplay Consulting, RAPP, Slippery Rock University, Schull Natural Resources, Tamara York Public Relations, Teach for America, The Arena Club, United Hospital Center, US Air Force, US Navy, WDTV, WV Dept of Agriculture, West Virginia Wesleyan College

Source: WVWC Career and Counseling Center

# Faculty and Staff



## Fall 2015 Employee Summary

### Number of staff by employment status and occupational category: Fall 2015

Occupational Category	# of Full-time Employees	# of Part-time Employees	Full-Time Equivalent Employees
Total Number of Staff	284	120	324
Instructional Staff	91	52	108
Library Staff	7	0	7
Student and Academic Affairs and other Educational Services	11	19	17
Management	31	1	31
Business and Finance	9	2	10
Computer Engineering and Science	12	1	12
Community, Social Service, Legal, Arts, Design, Entertainment, and Sports and Media	42	23	50
Health Care Practitioners	3	7	5
Service Occupations	36	7	38
Sales and Related Occupations	2	1	2
Office and Administrative Support	24	7	26
Natural Resources, Construction, and Maintenance	14	0	14
Production, Transportation and Material Moving	2	0	2

NOTE: Full-time-equivalent (FTE) staff is calculated by summing the total number of full-time staff and adding one third of the total number of part-time staff. Graduate assistants are not included in the above figures. Many of the FTE figures may be included in the DFR.

Source: IPEDS Human Resources Survey (Employees as of November 1, 2015)

## Faculty Profile

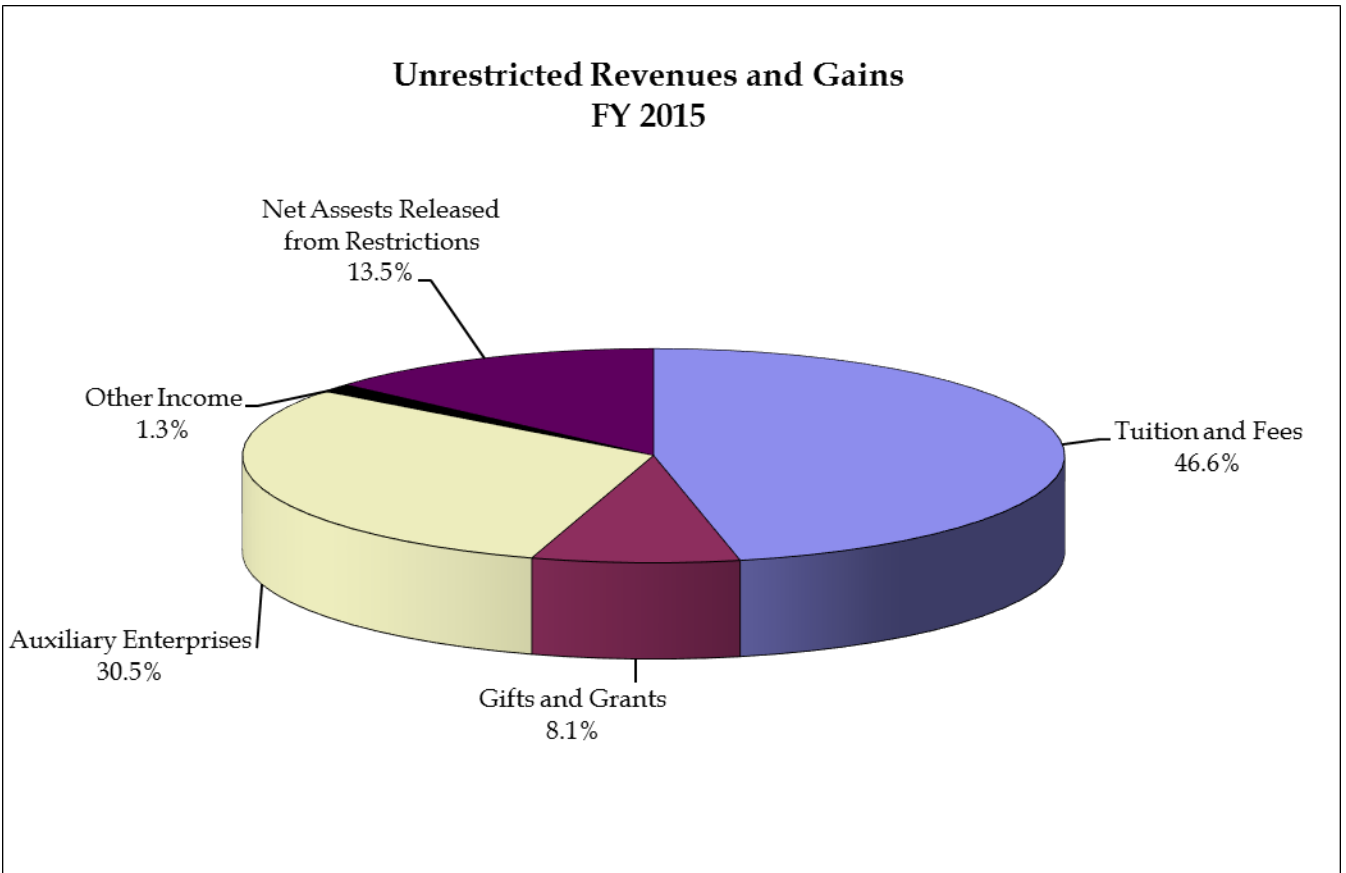
2015-16																				
Fall Semester Faculty Profile																				
							Terminal		9 - 12 Mo.	9- 12 Mo.	% Change									
Title	Number	%	Tenured	%	Doctorate	%	Degree	%	Salary Ave.	Salary Ave.	% Change									
									2014-2015	2015-2016	4-15 to 15-16									
Professors	12		11	92%	12	100%	12	100%	\$63,546	\$ 63,938	0.66%									
Men	10	83%	9	90%	10	100%	10	100%	\$64,712	\$ 64,736	0.04%									
Women	2	17%	2	100%	2	100%	2	100%	\$59,658	\$ 59,946	0.48%									
Associate Professor	30		26	87%	24	80%	28	93%	\$53,371	\$ 54,832	2.74%									
Men	12	40%	11	92%	8	67%	11	92%	\$54,301	\$ 56,491	4.03%									
Women	18	60%	16	89%	16	89%	17	94%	\$52,752	\$ 55,474	5.16%									
Assistant Professor	44		4	9%	17	39%	23	52%	\$45,295	\$ 46,560	2.79%									
Men	16	36%	2	13%	3	19%	5	31%	\$45,391	\$ 45,750	0.79%									
Women	28	64%	2	7%	14	50%	18	64%	\$45,258	\$ 47,023	3.90%									
Instructors	5		0	0%	0	0%	0	0%	\$40,169	\$ 40,800	1.57%									
Men	1	20%	0	0%	0	0%	0	0%												
Women	4	80%	0	0%	0	0%	0	0%	\$41,405	\$ 42,233	2.00%									
Total	91		41	45%	53	58%	63	69%	\$50,280	\$ 51,635	2.69%									
Total Men	39	43%	22	56%	21	54%	26	67%	\$53,491	\$ 53,686	0.36%									
Total Women	52	57%	20	38%	32	62%	37	71%	\$48,199	\$ 50,097	3.94%									
<table border="1" style="margin: auto;"> <thead> <tr> <th colspan="3">Faculty Census Head Count</th> </tr> <tr> <th>Full-Time</th> <th>Part-Time</th> <th>Total</th> </tr> </thead> <tbody> <tr> <td>91</td> <td>61</td> <td>152</td> </tr> </tbody> </table>												Faculty Census Head Count			Full-Time	Part-Time	Total	91	61	152
Faculty Census Head Count																				
Full-Time	Part-Time	Total																		
91	61	152																		
This count does not include SASS staff or instructors of developmental courses .																				
Fall Full-time Equivalent Faculty (FTE Faculty)																				
				2011	2012	2013	2014	2015												
<b>Total Faculty FTE (FT +(PT/3)</b>				109.3	112.7	106.3	106.7	111.3												
				2011	2012	2013	2014	2015												
<b>Undergraduate Student Faculty Ratio (Fall</b>				13.2:1	12.8:1	13.1:1	13.7:1	13.7:1												

Source: Academic Dean's office using the AAUP guidelines. These will differ slightly from the IPED Humane Resources Guidelines listed on the previous page. In the AAUP guidelines, a staff member who teaches will be counted on this report as part-time faculty. In the IPEDS report a staff member can only count in their primary employment category.

# Financials and Fund Raising



## Unrestricted Revenues and Gains

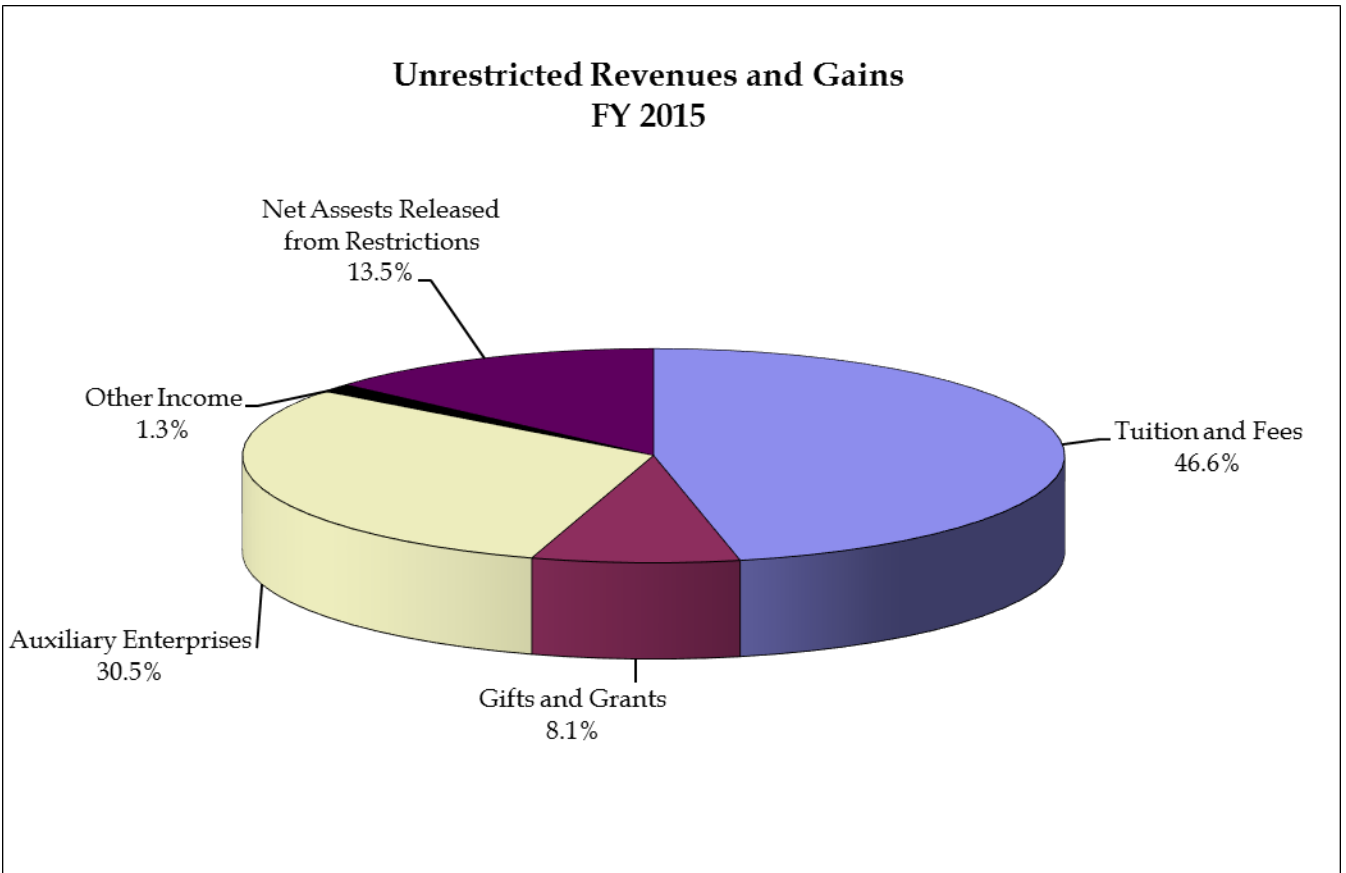


(Revenues in Million Dollars)

	<u>FY 2011</u>	<u>FY 2012</u>	<u>FY 2013</u>	<u>FY 2014</u>	<u>FY 2015</u>
Tuition and Fees	\$ 12.60	\$ 13.17	\$ 13.31	\$ 14.83	\$ 15.87
Gifts and Grants	\$ 1.15	\$ 1.13	\$ 1.35	\$ 3.18	\$ 2.77
Auxiliary Enterprises	\$ 9.16	\$ 9.08	\$ 9.27	\$ 9.82	\$ 10.36
Investment Income	\$ 0.33	\$ 0.27	\$ 0.18	\$ 0.35	\$ 0.44
Net Assets Released from Restrictions	\$ 5.07	\$ 4.37	\$ 3.70	\$ 4.06	\$ 4.59
<b>Total Current Funds Revenues</b>	<b>\$ 28.31</b>	<b>\$ 28.01</b>	<b>\$ 27.82</b>	<b>\$ 32.25</b>	<b>\$ 34.03</b>
<b>Academic Year FTE Enrollment</b>	<b>1352</b>	<b>1375</b>	<b>1310</b>	<b>1423</b>	<b>1441</b>

Source: WVWC Audited Financial Statements

## Expenditures by Category



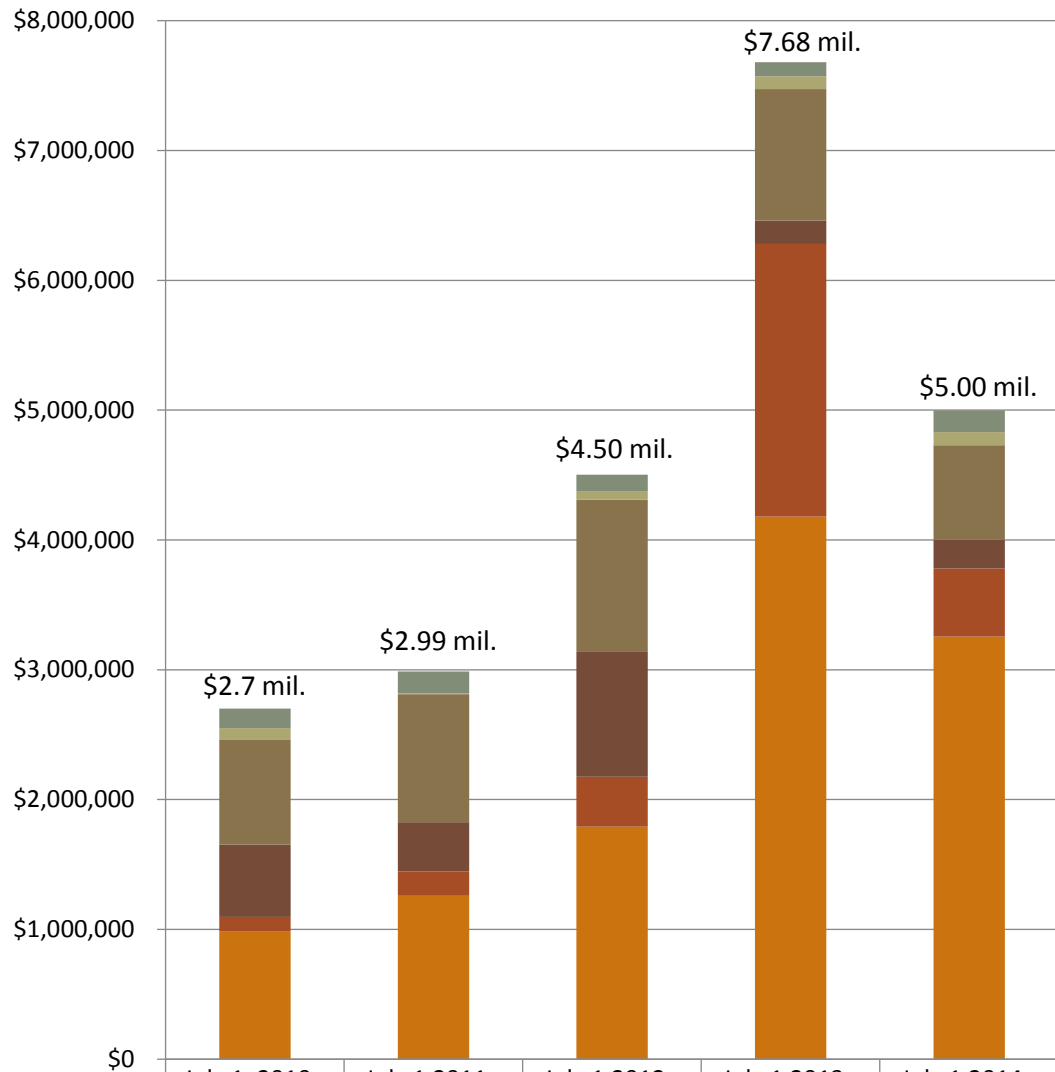
(Revenues in Million Dollars)

	<b><u>FY 2011</u></b>	<b><u>FY 2012</u></b>	<b><u>FY 2013</u></b>	<b><u>FY 2014</u></b>	<b><u>FY 2015</u></b>
Tuition and Fees	\$ 12.60	\$ 13.17	\$ 13.31	\$ 14.83	\$ 15.87
Gifts and Grants	\$ 1.15	\$ 1.13	\$ 1.35	\$ 3.18	\$ 2.77
Auxiliary Enterprises	\$ 9.16	\$ 9.08	\$ 9.27	\$ 9.82	\$ 10.36
Investment Income	\$ 0.33	\$ 0.27	\$ 0.18	\$ 0.35	\$ 0.44
Net Assets Released from Restrictions	\$ 5.07	\$ 4.37	\$ 3.70	\$ 4.06	\$ 4.59
<b>Total Current Funds Revenues</b>	<b>\$ 28.31</b>	<b>\$ 28.01</b>	<b>\$ 27.82</b>	<b>\$ 32.25</b>	<b>\$ 34.03</b>
<b>Academic Year FTE Enrollment</b>	<b>1352</b>	<b>1375</b>	<b>1310</b>	<b>1423</b>	<b>1441</b>

Source: WVWC Audited Financial Statements

## Giving by Source

### Giving by Source FY 2011- FY 2015



	July 1, 2010 - June 30, 2011	July 1, 2011 - June 30, 2012	July 1, 2012 - June 30, 2013	July 1, 2013 - June 30, 2014	July 1, 2014 - June 30, 2015
■ Other Organizations	\$149,582	\$166,084	\$129,765	\$108,051	\$166,896
■ Religious Organizations	\$92,512	\$7,473	\$63,208	\$98,405	\$101,409
■ Foundations/Corporations	\$805,844	\$987,701	\$1,171,548	\$1,013,626	\$728,185
■ Other Individuals	\$557,617	\$379,555	\$962,767	\$180,101	\$221,231
■ Parents	\$114,015	\$187,829	\$384,490	\$2,099,092	\$525,107
■ Alumni	\$981,446	\$1,257,609	\$1,790,691	\$4,179,818	\$3,255,166

Source: WVWC VSE Report for each Fiscal Year



## West Virginia Wesleyan College Benchmark Institutions

Criteria Based Benchmark Institutions Fall 2011 Updated with 2013-14 IPEDS Data															
Institution Name	State	CC 2010: Basic (HD2012)	Grand total(EF2013 All students Undergraduate total)	Grand total(EF2013 All students Graduate and First profession)	Estimated FTE Enroll Fall 2013	First-time Full-time FR Fall 2013	Full-time retention rate 2013 (EF2012D)	Student-to-faculty ratio (EF2013D)	Value of endowment assets at the end of the fiscal year (F112-13 F2)	Total expenses- Total amount (F112-13 F2)	Athletic Affiliation	ACA	UMC		
Albright College	PA	Bach AS	2349	35	2344	655	71	15	\$57,785,112	\$51,647,535	NCAA III	0	UMC		
Asbury University	KY	Bach DF	1547	250	1557	322	80	12	\$37,169,130	\$32,552,799	NAIA	0	0		
Bethany College	WV	Bach AS	693	33	722	183	53	12	\$45,055,336	\$25,780,889	NCAA III	ACA	0		
Bridgewater College	VA	Bach AS	1848	0	1843	536	76	16	\$70,577,494	\$38,545,617	NCAA III	0	0		
Carson-Newman College	TN	Bach DF	1713	332	1894	480	69	12	\$50,396,319	\$36,025,967	NCAA II	ACA	0		
Christian Brothers University	TN	M Masters	1168	409	1332	262	78	9	\$29,399,672	\$44,993,110	NCAA II	0	0		
Emory and Henry College	VA	Bach AS	936	23	919	264	73	11	\$86,822,987	\$28,690,080	NCAA III	ACA	UMC		
Ferrum College	VA	Bach DF	1512	0	1499	554	49	16	\$43,292,408	\$34,833,965	NCAA III	ACA	UMC		
Freed-Hardeman University	TN	M Masters	1385	426	1567	355	78	13	\$42,919,783	\$36,195,643	NAIA	0	0		
Geneva College	PA	Bach DF	1541	311	1750	334	77	13	\$35,192,570	\$38,088,299	NCAA III	0	0		
Georgetown College	KY	Bach AS	1043	356	1201	243	76	9	\$42,489,656	\$38,190,488	NAIA	0	0		
Heidelberg University	OH	S Masters	1107	134	1159	351	65	16	\$33,845,235	\$30,479,924	NCAA III	0	0		
Hiram College	OH	Bach AS	1283	28	1186	287	76	11	\$63,400,588	\$35,669,248	NCAA III	0	0		
Hood College	MD	M Masters	1388	1004	1879	281	78	12	\$69,427,993	\$41,094,090	NCAA III	0	0		
Juniata College	PA	Bach AS	1625	10	1588	391	88	13	\$95,329,154	\$52,155,133	NCAA III	0	0		
Kentucky Wesleyan College	KY	Bach DF	657	0	633	163	65	11	\$30,350,865	\$14,404,580	NCAA II	0	UMC		
King College	TN	M Masters	2191	384	2447	233	69	12	\$32,942,594	\$27,389,943	NCAA II	ACA	0		
Lebanon Valley College	PA	Bach DF	1766	256	1854	415	83	12	\$48,933,275	\$51,928,711	NCAA III	0	UMC		
Marietta College	OH	Bach DF	1416	126	1475	385	72	11	\$68,726,490	\$46,336,990	NCAA III	0	0		
Maryville College	TN	Bach AS	1168	0	1144	349	72	13	\$62,798,768	\$27,972,368	NCAA III	ACA	0		
Muskingum University	OH	M Masters	1728	426	1779	403	68	14	\$65,367,000	\$35,945,837	NCAA III	0	0		
Saint Vincent College	PA	Bach AS	1596	217	1723	472	85	12	\$78,366,120	\$50,543,648	NCAA III	0	0		
Seton Hill University	PA	Bach DF	1958	399	1931	380	78	14	\$32,875,242	\$44,269,170	NCAA II	0	0		
Thiel College	PA	Bach DF	1100	0	1074	303	65	14	\$27,103,981	\$27,314,306	NCAA III	0	0		
University of Charleston	WV	Bach DF	1386	549	1839	271	66	14	\$36,096,461	\$37,969,607	NCAA II	ACA			
Virginia Union University	VA	Bach DF	1359	390	1720	402	54	14	\$27,907,128	\$31,594,324	NCAA II	0	0		
Virginia Wesleyan College	VA	Bach AS	1459	0	1386	453	67	13	\$51,827,301	\$38,424,349	NCAA III	0	UMC		
Westminster College	PA	Bach AS	1313	53	1305	302	86	11	\$101,710,354	\$39,846,585	NCAA III	0	0		
Wheeling Jesuit University	WV	Bach DF	1180	439	1313	250	67	12	\$18,757,016	\$36,086,603	NCAA II	ACA			
Wilmington College	OH	Bach DF	1169	4	1079	256	82	15	\$31,260,375	\$23,723,286	NCAA III	0	0		
Count			30	30	30	30	30	30	30	30		6	3		
75%tile			1618	389	1824	403	78	14	\$64,875,397	\$40,782,214	NAIA=3				
Median			1387	176	1528	342	73	13	\$44,173,872	\$36,141,123	NCAAII=8				
25%tile			1168	13	1190	266	67	12	\$33,168,254	\$30,758,524	NCAAIII=19				
<b>West Virginia Wesleyan College</b>	<b>WV</b>	<b>Bach DF</b>	1367	102	1447	471	65	13	\$37,889,807	\$28,406,786					

<i>Criterion by Category</i>																		
Control:	Private																	
State:	KY, OH, PA, TN, VA, WV, MD																	
Carnegie Classification 2010 Basic:	BA Arts and Science, BA Diverse Fields, MA University Smaller, MA University Medium																	
Carnegie Classification 2010 Undergraduate Program	Full-time, 4 year, Selective, Lower Transfer Students																	
	Full-time, 4 year, Selective, Higher Transfer Students																	
	Full-time, 4 year, More Selective, Lower Transfer Students																	
	Full-time, 4 year, More Selective, Higher Transfer Students																	
Carnegie Classification 2010 Enrollment Profile	Only Undergraduate 4 year, Very High Undergraduate, High Undergraduate																	
Carnegie Classification 2010 Size and Setting:	Very Small 4 year Primarily Residential																	
	Very Small 4 year Highly Residential																	
	Small 4 year Primarily Residential																	
	Small 4 year Highly Residential																	
Total Enrollment Fall 2010:	800 - 3000 Students																	
Value of Endowment Assets End of 2009-10 Academic Year:	20 Million - 100 Million																	
Total Expenses 2009-10 Academic Year:	Below \$50 Million																	

Schools Approved by the Board of Trustees, January 2012

Compiled by OIR, Data Source IPEDS Data Center updated summer 2015