



Fact Book

2007-2008

Tenth Edition

*Compiled by
The Office of Institutional Research*

Preface

The West Virginia Wesleyan College Fact Book is a summary of statistics gathered from various sources throughout the college. I would like to thank all of the many campus departments for their cooperation and assistance without which it would not be possible to provide this document.

The purpose of the Fact Book is to provide a useful resource for commonly used information about West Virginia Wesleyan College. The information included in this book comes mainly from management reports and college databases. When viewing the report please pay careful attention to the dates listed on the tables and charts.

This is the ninth edition of the West Virginia Wesleyan College Fact Book. I am always looking for ways to improve both the kinds of data and the presentation of the data included in this document. If you have any questions about the information or suggestion for improvements I would welcome the opportunity to discuss them with you.

*Tammy J. Crites
Director of Institutional Research*

January 2008

Notice of Nondiscrimination

West Virginia Wesleyan College, a private educational institution, is committed to the principle of equal opportunity for all qualified persons, welcomes students of all backgrounds and takes pride in the diversity of its faculty and staff. It assures students of access to all the privileges, programs and activities generally accorded or made available at the College. West Virginia Wesleyan College strongly supports affirmative action principles and does not discriminate on the basis of creed, religion, national or ethnic origin, age, race, sexual orientation, color, gender or handicap in the administration of its educational programs, admissions policies, financial aid programs, athletics, co-curricular activities or other College administered programs.

Table of Contents

Mission and

Organizational Structure

West Virginia Wesleyan College Mission Statement and Accreditation	5
West Virginia Wesleyan College Organizational Chart 2007-2008	6
Board of Trustees and Executive Administrative Officers and Faculty Chair and Senate 2007-2008	7

Fall 2007 New Students

New Student Admission Funnel and Academic Profile	9
Freshmen Demographics	10
Freshmen Tuition Discounting	11

Fall 2007 Student Body

Historical Enrollment	13
Undergraduate Student Headcount History	14
Ethnic and Gender Breakdown	15
Full Time and Part-time Undergraduates Declared Majors Fall 2007	17
Student Organizations	19
NCAA Division II Athletic Programs	20
Yearly Retention Rate	21
Retention and Graduation Rates	22
2006-2007 Degrees Awarded by Major Field of Study	23

Faculty and Staff

Academic and Administrative Employees by Department	26
2007 Faculty Profile	29

Financials

Unrestricted Revenues by Source	31
Current Expenditures by Category	32
Recent Tuition and Fees History	33

Comparative Group Data

Comparative Tuition and Fees	35
2006-07 Basic Comparative Group Characteristics	36
Selected Comparative Group Benchmarks	37

Mission and Organizational Structure

WEST VIRGINIA WESLEYAN COLLEGE

Statement of Mission

West Virginia Wesleyan College challenges its students to a life-long commitment to develop their intellectual, ethical, spiritual, and leadership potential and to set and uphold standards of excellence. Firmly rooted in the liberal arts tradition and closely related to The United Methodist Church, the College is a community of learning based on fundamental Principles formed at the intersections of Christian faith and liberal education: intellectual rigor, self-discovery, human dignity, mutual support, social justice, self-discipline, mental and physical wellness, the appreciation of diversity and the natural world, and the judicious use of resources. The College recognizes and affirms its interdependence with the external communities--local, regional, national and global-- and its covenant with the people of West Virginia to share its educational and cultural resources.

West Virginia Wesleyan College prepares its students through its curriculum of arts and sciences, preprofessional studies, and its rich campus life programs. As a residential, undergraduate institution of higher education, the College aspires to graduate broadly educated men and women who

- Think critically and creatively,
 - Communicate effectively,
 - Act responsibly, and
 - Demonstrate their local and world citizenship through service.

Wesleyan Accreditation

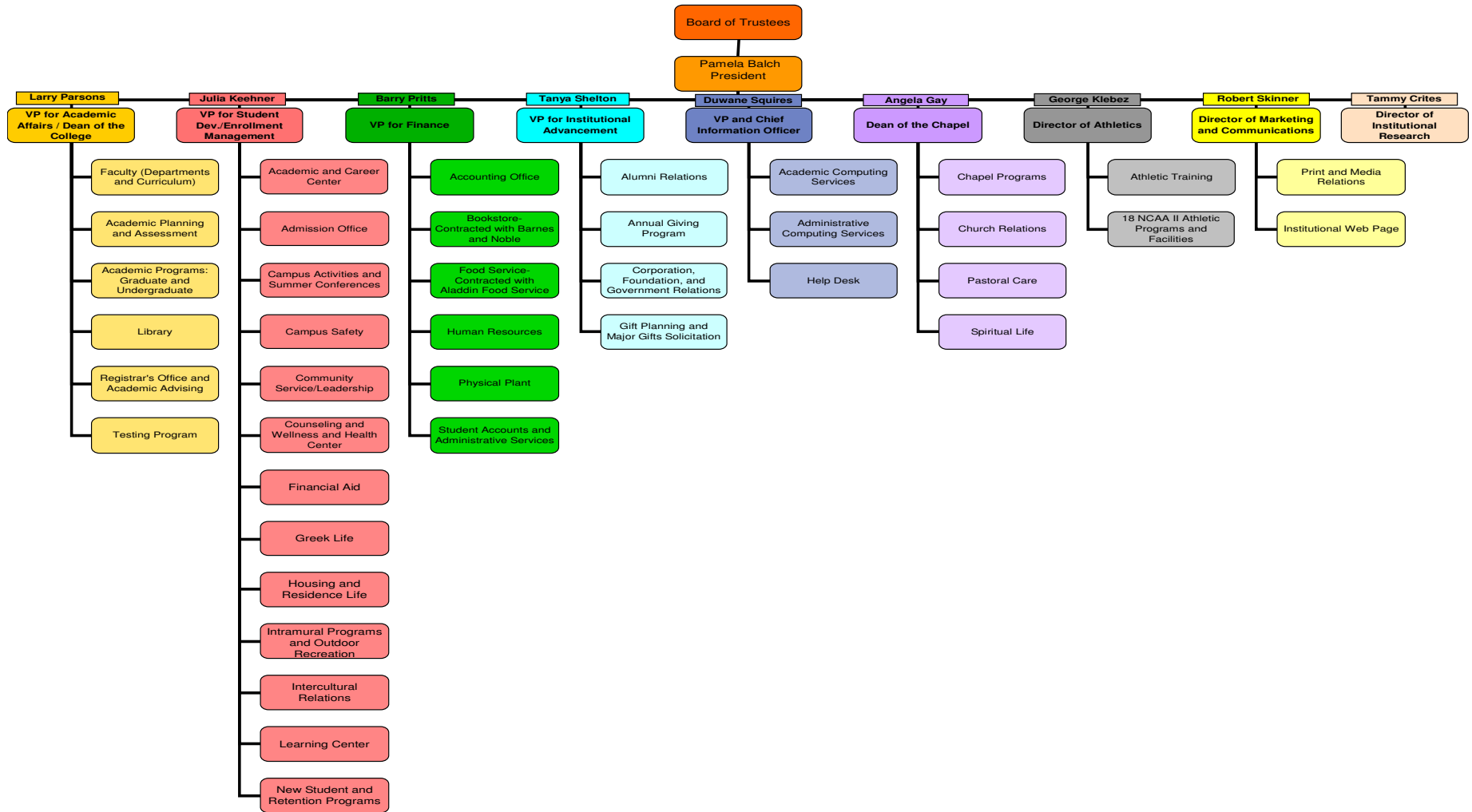
West Virginia Wesleyan is accredited by the Higher Learning Commission, A Commission of the North Central Association of Colleges and Schools and approved by the University Senate of The United Methodist Church. It is a member of the National Association of Schools of Music and is approved by the West Virginia Department of Education and the National Council for the Accreditation of Teachers Education. The College participates in the Interstate Certification Project, whereby a number of states now certify teachers graduating from Wesleyan's Department of Education. The nursing program is accredited by the National League for Nursing Accrediting Commission and approved by the State of West Virginia Board of Examiners for Registered Nurses. The athletic training program is accredited by the Commission of Accreditation of Athletic Training Education Programs. Degree programs offered in business and economics, including the Master of Business Administration program, are accredited by the International Assembly for Collegiate Business Education.

The College holds memberships in the Appalachian College Association, East Central Colleges, The National Association of Independent Colleges and Universities, the American Association of Colleges for Teacher Education, the National Association of Schools and Colleges of the United Methodist Church, Campus Compact, and the Council of Independent Colleges.

Wesleyan's athletic programs are affiliated with the West Virginia Intercollegiate Athletic Association and the National Collegiate Athletic Association, Division II.

West Virginia Wesleyan College Organizational Chart 2007- 2008

(as of October 2007)



**Board of Trustees,
Administrative Executive Officers and Faculty Senate
2007-2008
(as of October)**

Board of Trustees

*Lloyd G. Jackson II, Chairman
Alfred L. Moyè, 1st Vice Chair
Robert L. Allman II, 2nd Vice Chair
K.C. Caldabaugh, 3rd Vice Chair
Frederick H. Leasure, 4th Vice Chair
Roger Brown, 5th Vice Chair
Christine Cox, Secretary
Allyson Winters Adams
Pamela M. Balch
Helen Davis Bell
Ellis E. Conley
Randall Crawford
Thomas B. Dunn
John D. Esaias
Charles R. Evans
Charles W. Furbee III
Stephen Gammerino
William B. Grant
John L. Griffith
Gary F. Hess*

*Kevin D. Hoyle
David G. Hofstetter
Gregory Isaacs
David Jasper
Kathleen Long
Ronald M. McCauley
David C. Myers
Charolette L. Nath
David R. Peters
Kimberly A. Reed
Vance P. Ross
Joseph M. Shreve
Mary Jean Taylor
Amy W. Vaughan
Mara Linaberger Watson
Linda Kay Wellings
Jamion Wolford
Linda Xander*

President and Cabinet

*Pamela Balch, President of the College
Larry Parsons, Vice President for Academic Affairs, Dean of the College
Barry Pritts, Vice President for Finance
Julia Keehner, Vice President for Student Affairs and Enrollment Management
R. Duwane Squires, Vice President and Chief Information Officer
Tanya Shelton, Vice President for Advancement
Robert N. Skinner, II, Director of Marketing and Communication*

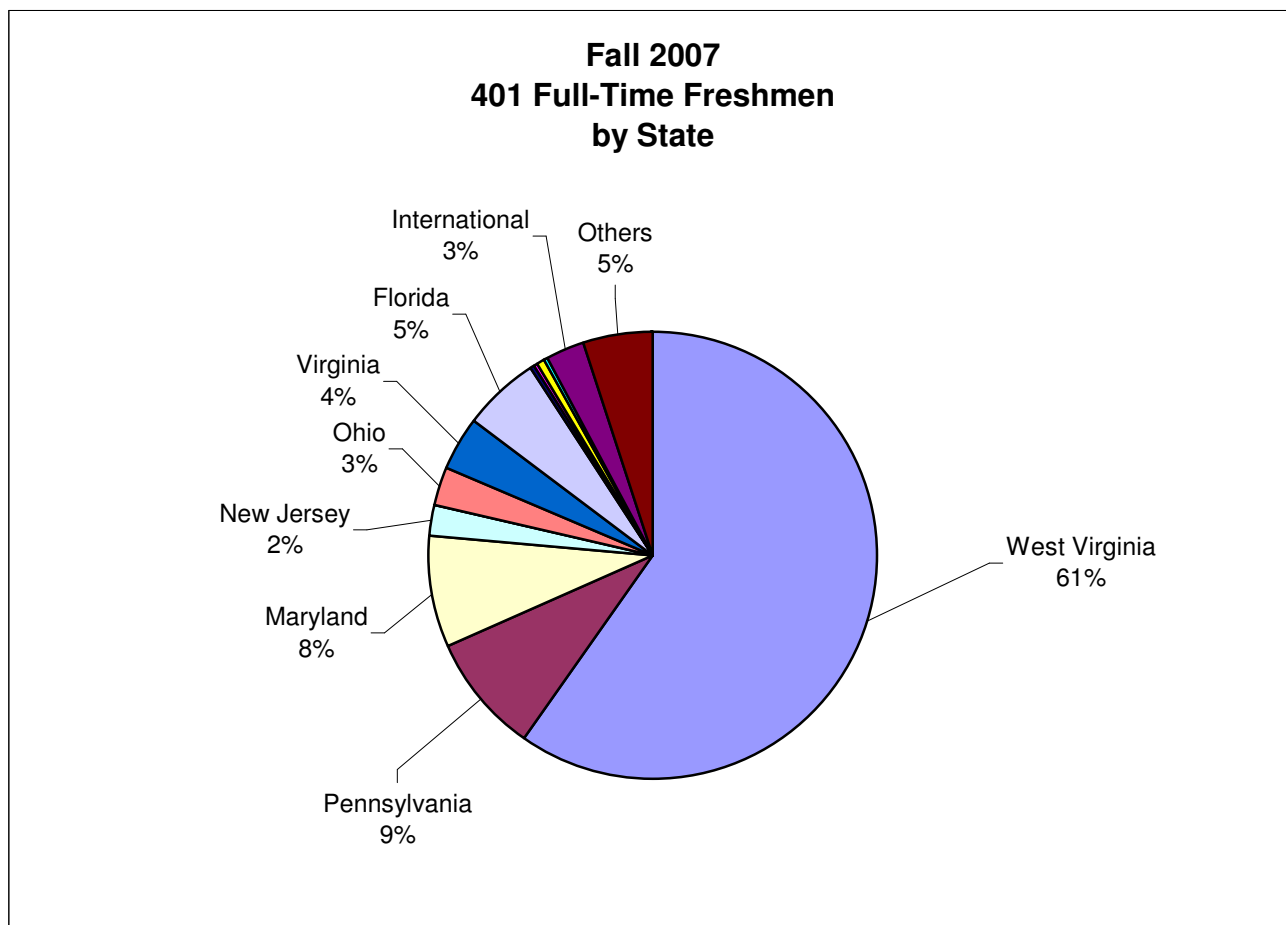
Faculty Chair and Senate

*Kathleen Long, Faculty Chair, Faculty Senate
Robert Rupp, Faculty Vice-Chair, Faculty Senate
Jeff Godwin, Faculty Senator
Larry Reed, Faculty Senator
Richard G. Weeks, Faculty Senator
Edward Wovchko, Faculty Senator*

Fall 2007 New Students

Fall 2003-2007 Full-Time Freshmen Enrollment Funnel and Academic Profile

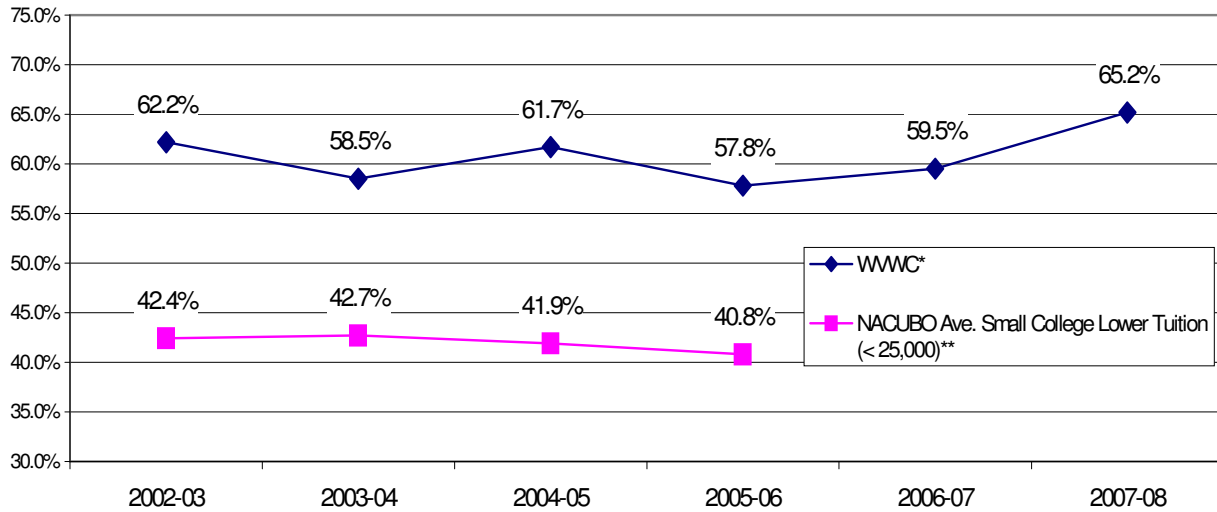
	Fall 2003	Fall 2004	Fall 2005	Fall 2006	Fall 2007
Applicants	1486	1263	1096	1230	1388
Accepted	1178	981	861	1026	1067
Accept rate	79.3%	77.7%	78.6%	83.4%	76.9%
Matriculates	458	348	307	290	401
Yield	38.9	35.5	35.7%	28.3%	37.6%
High School GPA	3.36	3.35	3.34	3.29	3.32
ACT Composite Score	23	23	23	23	23
SAT Verbal Score	515	513	515	506	488
SAT Math Score	518	517	512	496	495
SAT Combined	1033	1030	1027	1002	983



Fall 2003-2007 Full-Time Freshmen Demographics

	Fall 2003	Fall 2004	Fall 2005	Fall 2006	Fall 2007
Home State					
West Virginia	242	181	169	135	240
Pennsylvania	61	46	36	40	34
Maryland	36	40	22	26	32
New Jersey	27	17	12	12	9
New York	11	6	4	8	0
Ohio	13	6	9	18	11
Virginia	14	12	19	11	16
Florida	14	16	5	11	22
Maine	4	3	2	1	1
Massachusetts	3	1	1	1	2
Connecticut	2	1	1	2	2
New Hampshire	2	2	1	2	1
International	5	4	13	8	11
Others	24	14	13	15	20
Religious					
United Methodist	109	77	71	64	55
Roman Catholic	57	39	47	21	44
Baptist	47	41	31	18	32
Christian Missionary	10	8	0	0	0
Lutheran	6	2	9	2	8
Nazarene	5	2	2	0	3
Jewish	0	0	1	0	0
Presbyterian	16	17	6	13	14
Episcopal	3	5	4	2	4
United Church of Christ	7	0	1	2	6
Other	15	7	13	7	11
No Preference	183	153	122	161	224
Ethnic Classification					
White American	407	262	251	160	216
African American	25	29	12	13	4
Asian American	8	4	5	1	2
American Indian/Alaska Native	1	2	0	2	0
Spanish American	6	2	8	5	1
Not specified	1	48	20	101	166
International	10	4	11	8	12
Gender					
Female	256	180	161	166	203
Male	202	168	146	124	198

**West Virginia Wesleyan College
and NACUBO Average Small College Lower Tuition
Freshman Class Tuition and Fee Discount Percentage**



* Aid Figures as of October 1st of each year.

** Tuition and Fee category based on 2005-06 Figures

	2002-03	2003-04	2004-05	2005-06	2006-07	2007-08
WWC Tuition and Fees	\$19,300	\$19,850	\$20,450	\$21,250	\$21,250	\$21,830

Awarded Financial Aid to First-time Full-time Freshmen

	Fall 2002	Fall 2003	Fall 2004	Fall 2005	Fall 2006	Fall 2007
Number of First-time Full-time Freshmen	500	457	348	308	290	401
% applied for Financial Aid	99%	99%	98%	98%	99%	98%
% received any Financial Aid	99%	99%	99%	97%	99%	98%
% received gift aid	97%	98%	99%	96%	98%	98%
% received self help aid	99%	96%	98%	97%	96%	74%

Average Financial Aid Award All Sources	\$ 18,995	\$ 19,315	\$ 19,836	\$ 19,479	\$ 19,490	\$ 23,471
Average Gift Aid Award All Sources	\$ 15,247	\$ 14,420	\$ 15,963	\$ 15,309	\$ 16,111	\$ 18,464
Average Self Help Award all Sources	\$ 3,748	\$ 4,895	\$ 3,873	\$ 4,170	\$ 3,379	\$ 3,465

Source: Financial Planning Files as of no later than November 15th each year.

*Aid Averages do include Parent and Alternative Loan Amounts

% received Alternative Loans	4%	4%	4%	4%	6%	4%
% received Parent Plus Loans	13%	17%	21%	21%	17%	11%
Median EFC	8107	8255	9612	11547	12211	8302
% Pell Eligible	34%	33%	30%	25%	25%	30%

Fall 2007 Student Body

West Virginia Wesleyan College Historical Enrollment

NEW FULL TIME STUDENTS	2003-2004		2004-2005		2005-2006		2006-2007		2007-2008	
	Fall	Spring	Fall	Spring	Fall	Spring	Fall	Spring	Fall	Spring
Fall First Year	458	402	347	320	307	277	291	265	401	347
Spring First Year		5		0		4		4		6
Fall Transfers	43	40	34	30	24	19	39	35	55	45
Spring Transfers		10		10		13		19		7
Fall Visitors	5	5	6	6	6	5	5	4	5	5
Spring Visitors		0		0		0		0		0
Total	506	462	387	366	337	318	335	327	461	410
RETURNING FULL TIME STUDENTS										
Continuing Students	1034	960	1059	965	945	874	796	737	725	674
Fall readmits	13		10		15		9		16	
Spring Readmits		14		7		6		10		12
Total	1047	974	1069	972	960	880	805	747	741	686
TRADITIONAL UNDERGRADUATES										
Full-time Enrollment	1553	1437	1456	1338	1297	1198	1140	1074	1202	1096
Part-time Enrollment	29	25	27	39	28	23	37	33	32	33
Total Headcount	1582	1462	1483	1377	1325	1221	1177	1107	1234	1129
FTE	1565	1450	1468	1351	1308	1208	1154	1089	1217	1110
Traditional Undergraduate Average FTE	1508		1410		1258		1122		1163	
ADDITIONAL UNDERGRADUATE PROGRAM										
Distance Learning**										
Full-time	0	0	0	0	0		0	0	0	0
Part-time	7	4	3	1	0		1	0	0	0
Total Headcount	7	4	3	1	0		1	0	0	0
TOTAL UNDERGRADUATE										
Full-time	1553	1437	1456	1338	1297	1198	1140	1074	1202	1096
Part-time	36	29	30	40	28	28	38	35	32	33
Total Headcount	1589	1466	1486	1378	1325	1221	1178	1107	1234	1129
Undergraduate FTE	1567	1452	1470	1351	1308	1208	1154	1089	1217	1110
Average Undergraduate FTE	1509		1411		1258		1122		1163	
MASTERS OF BUSINESS ADMINISTRATION***										
Full-time	22	24	29	32	35	36	35	34	25	28
Part-time	10	14	7	4	6	13	11	9	5	6
Total Headcount	32	38	36	36	41	49	46	43	30	34
FTE	27	31	34	34	44	43	41	39	28	31
Five Year MBA Program (not included in above MBA figures)#	12		18	22	24	30	20	28	16	19
MASTERS OF EDUCATION****										
Full-time									5	9
Part-time									7	4
Total Headcount									12	13
FTE									9	11
Five YEAR MED (not included in above MED figures)#									1	5
TOTAL HEAD COUNT ENROLLMENT	1621	1504	1522	1414	1366	1270	1224	1150	1276	1176
TOTAL STUDENT BODY SEMESTER FTE	1594	1483	1503	1385	1352	1250	1194	1128	1253	1152
TOTAL STUDENT BODY AVERAGE FTE	1538		1444		1301		1161		1203	

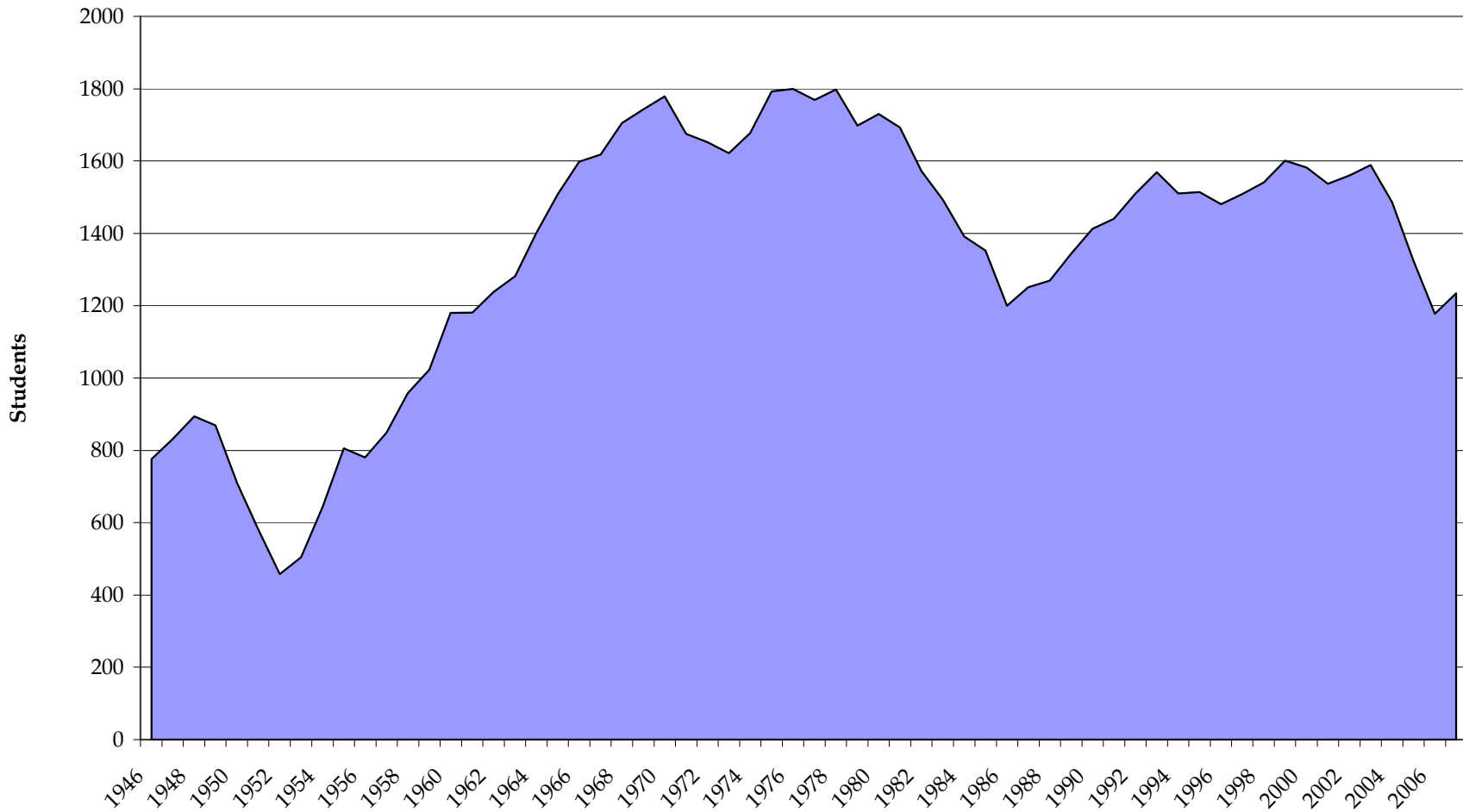
**Distance Education is an academic extension of West Virginia Wesleyan College, offering college-level courses designed for home study by students not enrolled in a campus based post-secondary program of study. In the Fall 1996 a rolling enrollment style registration was implemented in which a student could register for courses anytime during the year. The number listed here is as of the official date of enrollment for Fall

*** The MBA Program redefined full-time status from 9 credit hours to 6 credit hours per semester for Fall 1999. This change will inflate the number of full-time and FTE student compared to previous years. The figure that should be used to compare to prior years is the Head Count

Fall 2001 was the first year for tracking of 5 Year MBA Students. These students will be officially counted in the Undergraduate Headcount and FTE numbers but are also enrolled in one or more masters level courses.

**** The MED PROGRAM was reestablished in Fall 2007. The 5 year MED program students are officially counted in the undergraduate headcount and FTE numbers but are also enrolled in one or more masters level courses.

West Virginia Wesleyan College Undergraduate Student Headcount Fall 1946 to Fall 2007



	1946	1947	1948	1949	1950	1951	1952	1953	1954	1955	1956	1957	1958	1959	1960	1961	1962	1963	1964	1965	1966	1967	1968	1969	1970	1971	1972	1973	1974	1975	1976	1977	1978	1979	1980	1981	1982	1983	1984	1985	1986	1987	1988	1989	1990	1991	1992	1993	1994	1995	1996	1997	1998	1999	2000	2001	2002	2003	2004	2005	2006	2007
Headcount	776	832	894	869	710	581	458	504	643	806	780	849	958	1023	1180	1181	1238	1281	1401	1509	1598	1618	1705	1743	1779	1675	1652	1622	1678	1795	1800	1769	1798	1698	1730	1695	1572	1494	1391	1352	1200	1251	1269	1343	1413	1440	1510	1569	1510	1534	1481	1509	1541	1601	1582	1537	1560	1589	1486	1325	1178	1234

FALL 2007 ALL STUDENTS ETHNIC AND GENDER BREAKDOWN

Undergraduates

		Nonresident alien	Black non-Hispanic	Am. Indian or Alaskan Native	Asian or Pacific Islander	Hispanic	White, non-Hispanic	Biracial	Race/eth. unknown	Total	Gender Percentage
Full Time Undergraduates											
	Men	30	27	1	2	7	312	0	176	555	46.2%
	Women	23	13	0	4	6	444	0	157	647	53.8%
Full-time											
	Ethnic Percentages	4.4%	3.3%	0.1%	0.5%	1.1%	62.9%	0.0%	27.7%		
Part Time Undergraduates											
	Men	1	0	0	0	0	8	0	7	16	50.0%
	Women	0	0	0	0	0	14	0	2	16	50.0%
Total Undergraduates											
	Men	31	27	1	2	7	320	0	183	571	46.3%
	Women	23	13	0	4	6	458	0	159	663	53.7%
Undergraduate		54	40	1	6	13	778	0	342	1234	
	Ethnic Percentages	4.4%	3.2%	0.1%	0.5%	1.1%	63.0%	0.0%	27.7%		

Graduate Students

Full Time Graduate Students											
	Men	0	0	0	0	0	14	0	2	16	51.6%
	Women	0	0	0	0	0	11	0	4	15	48.4%
Part-time Graduate Students											
	Men	0	0	0	0	0	2	0	2	4	40.0%
	Women	0	0	0	0	0	3	0	3	6	60.0%
Total Graduate Students											
	Men	0	0	0	0	0	16	0	4	20	47.6%
	Women	0	0	0	0	0	15	0	7	22	52.4%
Total Graduate Students											
	Ethnic Percentages	0.0%	0.0%	0.0%	0.0%	0.0%	73.8%	0.0%	26.2%		

Grand Total Students

Grand Total Students	Men	31	27	1	2	7	336	0	187	591	46.3%
	Women	23	13	0	4	6	473	0	166	685	53.7%
	Ethnic Percentages	4.2%	3.1%	0.1%	0.5%	1.0%	63.4%	0.0%	27.7%	1276	

STATES AND COUNTRIES

West Virginia Wesleyan College has a commitment to providing a diverse environment for student to both learn in and live in. Fifty-seven percent of Wesleyan's student body are from WV representing 53 out of 55 counties. Thirty-nine percent of the student body consists of students from 34 other states and four percent are international students from the 13 different countries.

Ten Year Full-time Undergraduate Ethnic and Gender and Basic Geographic Breakdown Summary

Fall Full-time Undergraduates Ethnic Summary

	1998	1999	2000	2001	2002	2003	2004	2005	2006	2007
Minority*	9.2%	7.7%	7.3%	8.0%	7.3%	7.1%	7.9%	7.6%	7.2%	5.0%
International**	4.5%	4.3%	4.0%	3.8%	3.1%	3.0%	3.0%	3.2%	3.6%	4.6%
White/Non-Hispanic	86.1%	87.4%	88.7%	87.9%	89.5%	81.5%	79.5%	79.5%	72.5%	62.9%
Unknown	0.3%	0.6%	0.0%	0.3%	0.0%	8.4%	9.6%	9.7%	16.8%	27.7%

* Minority students include: Black Non-Hispanic, Am. Indian or Alaskan, Asian or

** International students include: students with the ethnic code of Nonresident Alien

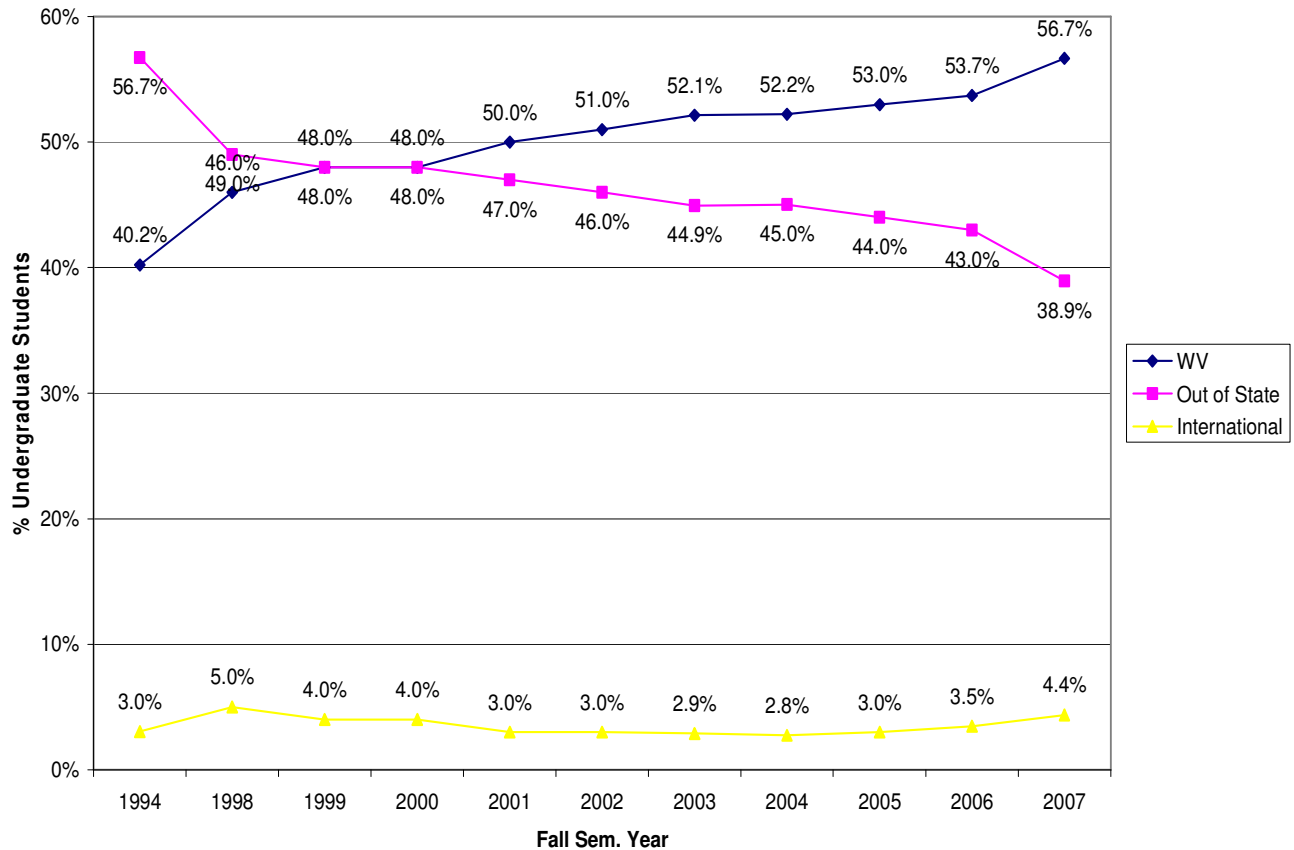
Fall Full-time Undergraduates Gender Summary

	1998	1999	2000	2001	2002	2003	2004	2005	2006	2007
% of Full-time Undergraduates										
Male	46.3%	44.1%	43.9%	46.3%	45.3%	44.8%	46.8%	44.6%	45.8%	46.2%
Female	53.7%	55.9%	56.1%	53.7%	54.7%	55.2%	53.2%	55.4%	54.2%	53.8%

Fall Undergraduates Geographic Summary

	1998	1999	2000	2001	2002	2003	2004	2005	2006	2007
WV	46%	48%	48%	50%	51%	52%	52%	53%	54%	57%
Out of State	49%	48%	48%	47%	46%	45%	45%	44%	43%	39%
International	5%	4%	4%	3%	3%	3%	3%	3%	3%	4%
Undergrad Head Count	1,541	1,571	1,539	1,507	1,558	1,582	1,486	1,297	1,177	1,235

Fall Undergraduate Headcount Geographic Summary
Ten Year History



**Full-time and Part-time Undergraduates
Declared Academic First and Second Majors
October 2007**

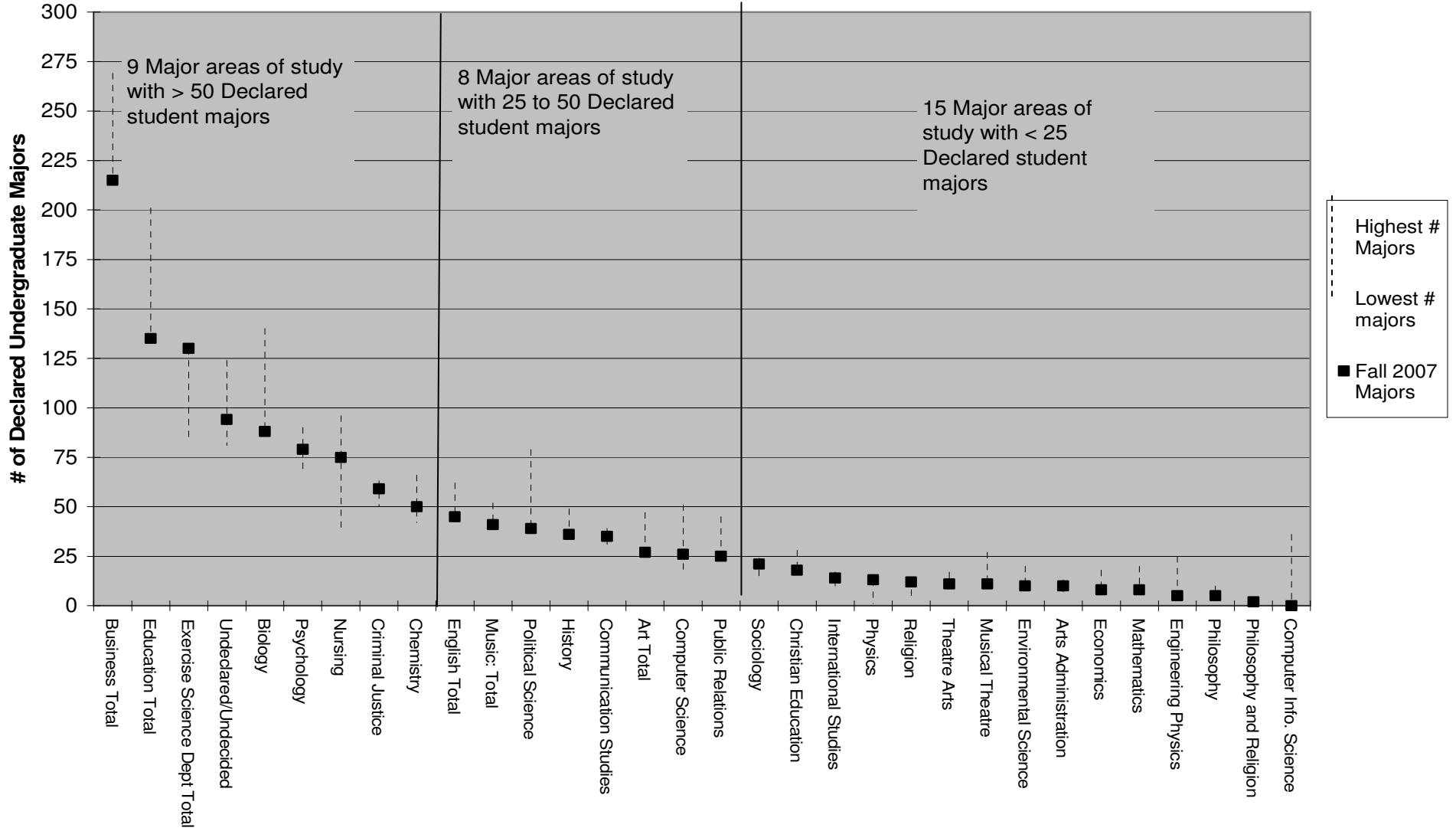
Major	Track	2007				Most Recent 5 Year			
		Majors	2nd Majors	Total Majors	% of Total	Majors	2nd Majors	Total Majors	% of Total
Art Total		26	1	27	2.0%	169	4	173	2.3%
	Education			0	0.0%	0	0	0	0.0%
	Graphic Design	22		22	1.6%	83	0	83	1.1%
	Painting/Drawing			0	0.0%	10	0	10	0.1%
	Studio	3		3	0.2%	13	0	13	0.2%
	Ceramics			0	0.0%	2	0	2	0.0%
	Intermedia	1	1	2	0.1%	4	1	5	0.1%
Arts Administration		10	0	10	0.7%	41	9	50	0.7%
Biology		86	2	88	6.5%	541	6	547	7.3%
Business Total		204	11	215	16.0%	1168	54	1222	16.2%
	Accounting	43	1	44	3.3%	231	4	235	3.1%
	Finance	0	0	0	0.0%	28	0	28	0.4%
	Business Admin	88	3	91	6.8%	436	25	461	6.1%
	Management	30	3	33	2.4%	201	12	213	2.8%
	Marketing	33	2	35	2.6%	215	7	222	3.0%
	International Business	10	2	12	0.9%	57	6	63	0.8%
	5 year MBA			0	0.0%	0	0	0	0.0%
Chemistry		46	4	50	3.7%	209	61	270	3.6%
Christian Education		11	7	18	1.3%	93	17	110	1.5%
Communication Studies		29	6	35	2.6%	154	21	175	2.3%
Computer Info. Science		0	0	0	0.0%	71	4	75	1.0%
Computer Science		26	0	26	1.9%	152	2	154	2.0%
Contract Major				0	0.0%	1	0	1	0.0%
Criminal Justice		54	5	59	4.4%	242	40	287	3.8%
Dramatic Arts				0	0.0%	3	1	4	0.1%
Economics		5	3	8	0.6%	33	31	64	0.9%
Education Total		132	3	135	10.0%	783	66	849	11.3%
	Elementary	71	0	71	5.3%	474	6	480	6.4%
	Secondary	61	3	64	4.8%	309	60	369	4.9%
Engineering Physics		5	0	5	0.4%	77	0	77	1.0%
English Total		33	12	45	3.3%	183	61	244	1.8%
	English	11		11	0.8%	29	26	55	0.7%
	Education			0	0.0%	14	0	14	0.2%
	Literature	7		7	0.5%	25	0	25	0.3%
	Writing	15		15	1.1%	45	0	45	0.6%
Environmental Science		10	0	10	0.7%	78	1	79	1.0%
Exercise Science (Health and Physical Education) Total		126	4	130	9.7%	460	19	479	6.4%
	Physical Education	7	3	10	0.7%	81	13	94	1.2%
	Exercise Science (Health Promo./Fitness)	58	1	59	4.4%	149	1	150	2.0%
	Athletic Training	61	0	61	4.5%	230	5	235	3.1%
History		29	7	36	2.7%	151	57	208	2.8%
International Studies		12	2	14	1.0%	53	19	72	1.0%
Mathematics		3	5	8	0.6%	42	29	71	0.9%
Music: Total		39	2	41	3.0%	209	14	223	3.0%
	Music	19	2	21	1.6%	85	13	98	1.3%
	Education	20	0	20	1.5%	124	1	125	1.7%
Musical Theatre		10	1	11	0.8%	86	7	93	1.2%
Nursing		75	0	75	5.6%	356	0	356	4.7%
Philosophy		2	3	5	0.4%	19	21	40	0.5%
Philosophy and Religion		2	0	2	0.1%	8	1	9	0.1%
Physics		13	0	13	1.0%	27	3	30	0.4%
Political Science		28	11	39	2.9%	230	59	289	3.8%
Psychology		69	10	79	5.9%	357	29	386	5.1%
Public Relations		24	1	25	1.9%	152	14	166	2.2%
Religion		9	3	12	0.9%	32	16	48	0.6%
Social Science				0	0.0%	0	0	0	0.0%
Sociology		13	8	21	1.6%	48	50	98	1.3%
Theatre Arts		10	1	11	0.8%	66	8	74	1.0%
Undeclared/Undecided		94		94	7.0%	502	0	502	6.7%
Total Undergraduate Students		1235	112	1347	100.0%	6796	724	7525	100.0%

% with more than one major

9.1%

10.7%

**Fall 2007 Declared Undergraduate Majors
and 2003 - 2007
Range for Number of Majors**



West Virginia Wesleyan College
Student Organizations
(In Alphabetical Order)

4-H Club	Delta Mu Delta	Phi Sigma Tau
Alpha Delta Pi	Engineering/Physics Club	Pre-Law
Alpha Gamma Delta	Freshman Council	Psi Chi
Alpha Lambda Delta	Gamma Sigma Alpha	Residence Hall Council
Alpha Phi Alpha	Green Club	SADD
Alpha Phi Omega	Hallom Math Honorary	Senior Class
Alpha Psi Omega	Honors Student Organization	SIFE
Alpha Sigma Phi	Interfraternity Council	Sigma Alpha Iota
	International Student	
Alpha Xi Delta	Organization	Sigma Tau Delta
Awards and Elections	Intervarsity Christian Fellowship	Sigma Theta Epsilon
Beta Beta Beta	Jazz Ensemble	Sigma Theta Tau
Black Business Student		
Assn	Junior Class	SNOW
Black Student Union	Kappa Delta Pi	Sociology Club
Bonner Scholars	Kappa Phi	Sophomore Class
Campus Activities Board	Lambda Pi Eta	Special Activities Committee
Campus Crusade	Loveshine	Standard Deviators
Catholic Campus Ministry	Mortar Board	Student Art League
Chapel Choir	Murmurmontis	Student Athletic Trainers' Club
Cheerleading	Nurses Chrstian Fellowship	Student Education Association
Chi Phi	Omega Psi Phi Fraternity	Theta Chi
Chrisitan Life Council	Omicron Delta Epsilon	Theta Xi
		United Methodist Student
Circle K	Omicron Delta Kappa	Movement
College Republicans	Order of Omega	Wesleyan Ambassadors
Community Council	Panhellenic Association	Wesleyan Singers
Computer Club	Peace with Judice Com	Wesleyan's Lacrosse
Concentus Vocum	Pharos	WVWC-FM 92
Concert Band	Phi Kappa Phi	Young Democrats
Concert Chorale	Phi Mu Alpha Sinfonia	Zeta Tau Alpha

**West Virginia Wesleyan College
All Student Athletes
by Scholarship Status**

Sports	All Student Fall 2007				All Student Fall 2006				All Student Fall 2005			
	Number of Student Athletes	Scholarship Student Athletes	Walk on Student Athletes	% Scholarship	Number of Student Athletes	Scholarship Student Athletes	Walk on Student Athletes	% Scholarship	Number of Student Athletes	Scholarship Student Athletes	Walk on Student Athletes	% Scholarship
Baseball	53	29	24	55%	27	15	12	56%	29	21	8	72%
M. Basketball	26	15	11	58%	14	12	2	86%	11	10	1	91%
M. Cross Country and Track*	38	22	16	58%	44	18	26	41%	48	27	21	56%
Football	107	66	41	62%	78	56	22	72%	70	54	16	77%
Golf	14	4	10	29%	16	5	11	31%	15	6	9	40%
M. Soccer	39	22	17	56%	28	18	10	64%	28	16	12	57%
M. Swimming	12	10	2	83%	10	9	1	90%	12	12	0	100%
M. Tennis	16	5	11	31%	10	3	7	30%	11	5	6	45%
Totals	305	173	132	57%	227	136	91	60%	224	151	73	67%
% of FT Undergraduate Men	55.0%	31.2%	23.8%		43.6%	26.1%	17.5%					
# of FT Undergraduate Men	555				521							
Women's Programs												
W. Basketball	21	16	5	76%	12	12	0	100%	14	13	1	93%
W. Cross Country and Track*	37	25	12	68%	38	23	15	61%	39	27	12	69%
W. Soccer	27	20	7	74%	24	14	10	58%	20	10	10	50%
Softball	30	19	11	63%	20	12	8	60%	20	12	8	60%
W. Swimming	6	5	1	83%	9	6	3	67%	7	7	0	100%
W. Tennis	11	6	5	55%	11	6	5	55%	10	6	4	60%
Volleyball	19	11	8	58%	10	9	1	90%	14	11	3	79%
W. Golf	8	4	4	50%	8	0	8	0%				
Totals	159	106	53	67%	132	82	50	62%	124	86	38	69%
% FT Undergraduate Women	24.6%	16.4%	8.2%		21.3%	13.2%	8.1%					
# of FT Undergraduate Women	647				619							
All Student Athlete Totals	464	279	185	60%	359	218	141	61%	348	237	111	68%
% of Total Students	38.6%	23.2%	15.4%		31.5%	19.1%	1.3%		26.8%	18.3%	8.6%	
# Total FT Students	1202				1140				1298			

* This number does not include those athlete who also participated in another sport during the year.

Compiled by the Office of Institutional Research

Source: WVWC Squad Lists as provided by the Financial Aid Office.

West Virginia Wesleyan College
Fall to Fall
Institutional Yearly Retention Rate
First-Time Full-time Freshmen

Fall to Fall Year of Retention*	Fall 97 to Fall 98	Fall 98 to Fall 99	Fall 99 to Fall 00	Fall 00 to Fall 01	Fall 01 to Fall 02	Fall 02 to Fall 03	Fall 03 to Fall 04	Fall 04 to Fall 05	Fall 05 to Fall 06	Fall 06 to Fall 07	<i>Most Recent 3 yr Average</i>
Freshmen to Sophomore (Year 1)	76.7%	78.0%	73.5%	73.7%	75.8%	80.8%	72.4%	75.0%	70.0%	75.3%	72.6%
Sophomore to Junior (Year 2)	84.2%	81.5%	80.8%	83.2%	86.0%	81.8%	82.4%	83.0%	83.1%	88.3%	82.8%
Junior to Senior (Year 3)	92.7%	91.3%	92.7%	91.3%	95.5%	92.4%	95.6%	92.5%	92.7%	95.4%	93.6%
Yearly Retention Rate**	59.8%	58.0%	55.0%	56.0%	62.2%	61.1%	57.1%	57.6%	54.0%	63.4%	56.3%

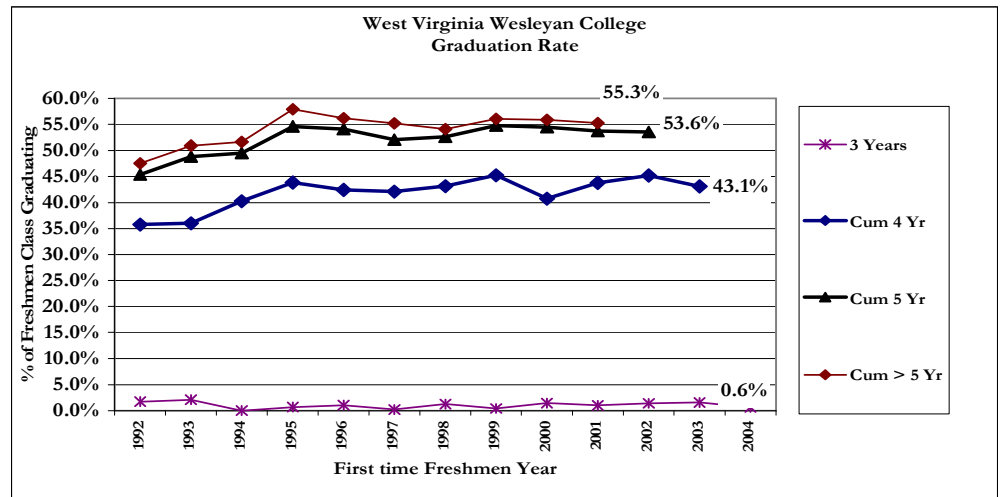
* These numbers only reflect retention for students who originally entered WVWC as First-time Full-time Freshmen

**Yearly Retention Rates = 100% X First Year Retention X Second Year Retention X Third Year Retention reflects an overall retention rate for that Academic Year

West Virginia Wesleyan College First-time Full-time Freshmen Retention and Graduation Rates 1988 to Present

First-Time Full-time Freshmen and Year Entering College	Returning for:								Graduating in:				Total	Total Grads %	
	Year 2	%	Year 3	%	Year 4	%	Year 5	Year 6	3 yrs or less	4 yrs	5 yrs	> 5			
1988	357	262	73.4%	229	64.1%	220	61.6%	50	5	0	145	50	11	206	57.7%
1989	411	319	77.6%	242	58.9%	233	56.7%	52	1	4	146	59	12	221	53.8%
1990	411	312	75.9%	237	57.7%	229	55.7%	39	2	0	161	41	14	216	52.6%
1991	363	273	75.2%	230	63.4%	207	57.0%	41	1	6	149	44	9	208	57.3%
1992	467	325	69.6%	252	54.0%	227	48.6%	51	8	8	159	45	10	222	47.5%
1993	475	332	69.9%	277	58.3%	244	51.4%	58	8	10	161	61	10	242	50.9%
1994	455	324	71.2%	263	57.8%	240	52.7%	48	5	0	183	42	10	235	51.6%
1995	454	352	77.5%	289	63.7%	268	59.0%	59	4	3	196	49	15	263	57.9%
1996	377	272	72.1%	229	60.7%	209	55.4%	35	3	4	156	44	8	212	56.2%
1997	480	368	76.7%	300	62.5%	277	57.7%	54	8	1	201	48	15	265	55.2%
1998	473	369	78.0%	300	63.4%	267	56.4%	50	9	6	198	45	7	256	54.1%
1999	471	348	73.9%	288	61.1%	276	58.6%	47	3	2	211	45	6	264	56.1%
2000	415	306	73.7%	264	63.6%	244	58.8%	63	3	6	163	57	6	232	55.9%
2001	400	303	75.8%	248	62.0%	235	58.8%	36	6	4	171	40	6	221	55.3%
2002	500	404	80.8%	333	66.6%	294	58.8%	63	4	7	219	42			
2003	457	331	72.4%	272	59.5%	245	53.6%	39		7	190				
2004	348	261	75.0%	214	61.5%	207				2					
2005	307	215	70.0%	190	61.9%										
2006	291	219	75.3%												
2007	401														
Recent 5 Yr Average	381	303	75.2%	266	62.8%	259	57.7%	52	6	5	191	46	8	248	55.3%

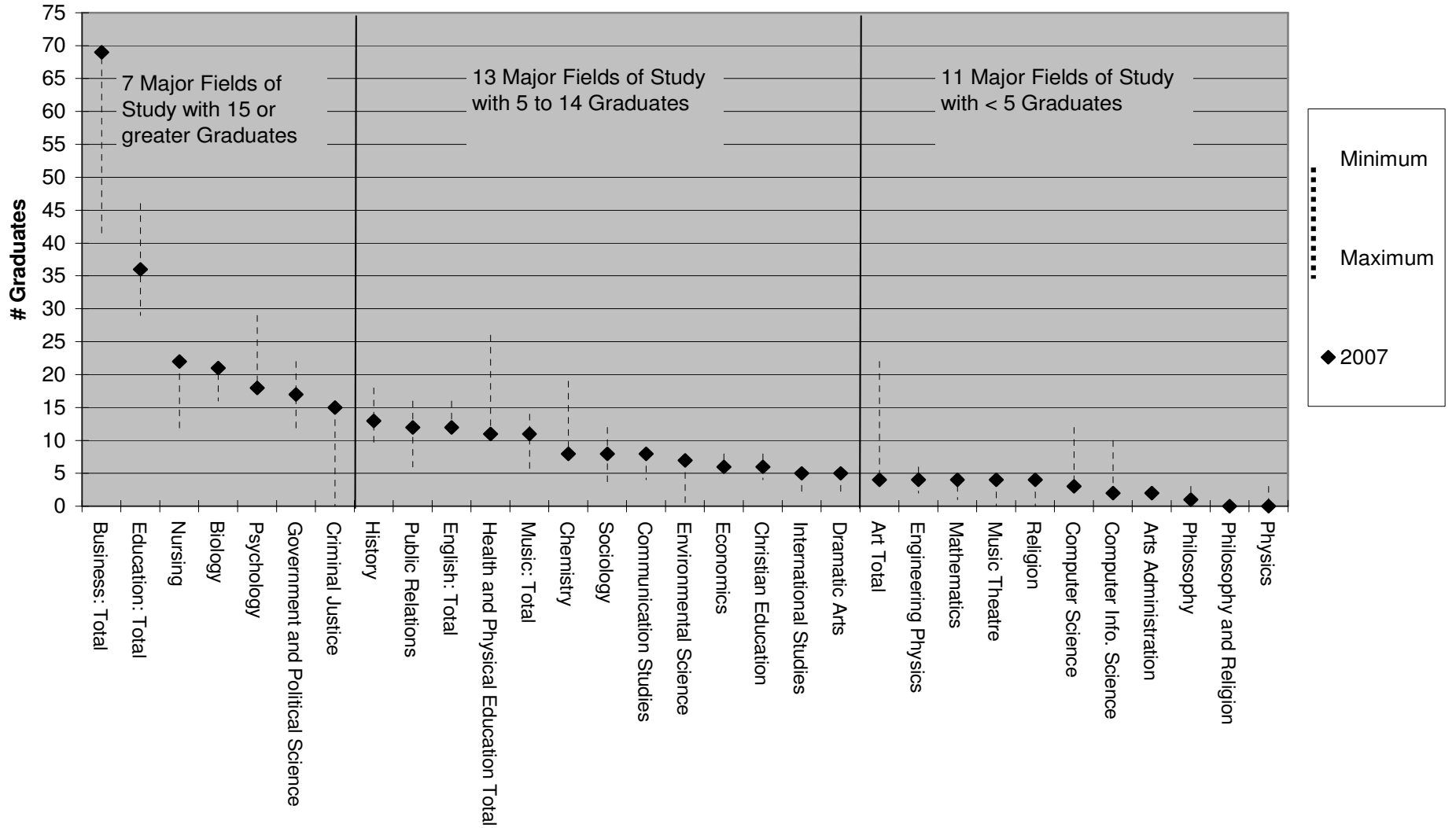
First Time Freshmen Year	Graduation Rates					
	3 Years	Cum 4 Yr	5 years	Cum 5 Yr	> 5	Cum > 5 Yr
1988	0.0%	40.6%	14.0%	54.6%	3.1%	57.7%
1989	1.0%	36.5%	14.4%	50.9%	2.9%	53.8%
1990	0.0%	39.2%	10.0%	49.1%	3.4%	52.6%
1991	1.7%	42.7%	12.1%	54.8%	2.5%	57.3%
1992	1.7%	35.8%	9.6%	45.4%	2.1%	47.5%
1993	2.1%	36.0%	12.8%	48.8%	2.1%	50.9%
1994	0.0%	40.2%	9.2%	49.5%	2.2%	51.6%
1995	0.7%	43.8%	10.8%	54.6%	3.3%	57.9%
1996	1.1%	42.4%	11.7%	54.1%	2.1%	56.2%
1997	0.2%	42.1%	10.0%	52.1%	3.1%	55.2%
1998	1.3%	43.1%	9.5%	52.6%	1.5%	54.1%
1999	0.4%	45.2%	9.6%	54.8%	1.3%	56.1%
2000	1.4%	40.7%	13.7%	54.5%	1.4%	55.9%
2001	1.0%	43.8%	10.0%	53.8%	1.5%	55.3%
2002	1.4%	45.2%	8.4%	53.6%		
2003	1.5%	43.1%				
2004	0.6%					
Recent 5 Yr Average	1.2%	43.7%	10.1%	53.8%	1.8%	55.3%



Degrees Awarded By Major Field of Study 2006-2007

		2007 July 1, 2006 through June 30, 2007			
Major	Division	Majors	Second or third Majors	Total Majors	%of All
Art Total		4	0	4	1.2%
	Education			0	0.0%
	Graphic Design	2		2	0.6%
	Painting/Drawing	2		2	0.6%
	Studio			0	0.0%
	Ceramics			0	0.0%
	Intermedia			0	0.0%
Art Administration		2		2	0.6%
Biology		21		21	6.2%
Business: Total		67	2	69	20.4%
	Accounting	21		21	6.2%
	Finance	3		3	0.9%
	Business Administration	13	0	13	3.8%
	International Business	4		4	1.2%
	Management	15	1	16	4.7%
	Marketing	11	1	12	3.6%
	Mgt. Info. Systems			0	0.0%
Chemistry		7	1	8	2.4%
Christian Education		6		6	1.8%
Communication Studies		8		8	2.4%
Computer Info. Science		2		2	0.6%
Computer Science		3		3	0.9%
Contract Major		0		0	0.0%
Criminal Justice		13	2	15	4.4%
Dramatic/Theatre Arts		5		5	1.5%
Economics		0	6	6	1.8%
Education: Total		34	2	36	10.7%
	Elementary	22		22	6.5%
	Secondary	12	2	14	4.1%
Engineering Physics		4		4	1.2%
English: Total		9	3	12	3.6%
	Education			0	0.0%
	Literature	2		2	0.6%
	Writing	7		7	2.1%
Environmental Science		7		7	2.1%
Government and Political Science		15	2	17	5.0%
Health and Physical Education Total		11		11	3.3%
	Physical Education:	4	0	4	1.2%
	Health Promo./Fitness/Exercise Science	3		3	0.9%
	Sports Medicine/Athletic Training	4		4	1.2%
History		12	1	13	3.8%
International Studies		4	1	5	1.5%
Mathematics		4		4	1.2%
Music: Total		11	0	11	3.3%
	Music:	4	0	4	1.2%
	Education	7		7	2.1%
Music Theatre		3	1	4	1.2%
Nursing		22		22	6.5%
Philosophy		0	1	1	0.3%
Philosophy and Religion		0		0	0.0%
Physics		0		0	0.0%
Psychology		18		18	5.3%
Public Relations		10	2	12	3.6%
Religion		3	1	4	1.2%
Sociology		2	6	8	2.4%
				0	0.0%
Undeclared/Undecided				0	0.0%
				0	0.0%
Total Undergraduate Student Majors		307	31	338	100%
Number of Students with two or more Majors				45	15.4%
Number Undergraduate Degrees Awarded				293	
5 year Undergraduate/MBA		17		17 Broken into specialties above	
MBA		38	Includes 5 year	38	

2006-07 Graduating Degrees by Major Field of Study with 2003 - 2007 Minimum to Maximum Range



Faculty and Staff

West Virginia Wesleyan College

Employment in All Departments

(As of Oct. 31st each year)

Summary Pages

	Oct 31 2003		Oct 31 2004		Oct 31 2005		Oct 31 2006		Oct 31 2007	
	Full-time	Part-time	Full-time	Part-time	Full-time	Part-time	Full-time	Part-time	Full-time	Part-time
Academic Departments										
Art										
Instruction	3	3	4	1	4	1	3	1	2	2
Academic Support	0	0	0	0	0	0	0	0	0	0
Music										
Instruction	6	13	5	12	5	13	4	15	4	14
Academic Support	0	0	0	0	0	0	0	0	0	0
English										
Instruction	10	2	9	3	8	6	7	7	8	4
Academic Support	0	0	0	0	0	0	0	0	0	0
Modern Language							Now combined with English			
Instruction	1	1	1	2	1	2	0	0	0	0
Academic Support	0	0	0	0	0	0	0	0	0	0
Communication										
Instruction	5	0	5	0	4	0	4	0	4	1
Academic Support	0	0	0	0	0	0	0	0	0	0
Dramatic Arts										
Instruction	4	1	4	2	3	1	2	3	3	4
Academic Support	0	0	0	0	0	0	0	0	0	0
Philosophy										
Instruction	2	0	2	0	2	0	2	0	2	0
Academic Support	0	0	0	0	0	0	0	0	0	0
Religion										
Instruction	2	1	2	1	2	1	1	1	1	1
Academic Support	0	0	0	0	0	0	0	0	0	0
Christian Education										
Instruction	1	1	1	2	1	1	1	3	1	3
Academic Support	0	0	0	0	0	0	0	0	0	0
Biology										
Instruction	5.5	2	5	1	6	2	5	1	6	1
Academic Support	1	0	2	0	2	0	2	0	2	0
Chemistry										
Instruction	3	0	3	0	3	0	3	0	2	2
Academic Support	1	0	1	0	1	1	1	0	1	0
Math / Computer Science										
Instruction	5	2	4	1	5	1	3	2	3	2
Academic Support	0	0	0	0	0	0	0	0	0	0
Engineering Physics										
Instruction	2	3	2	2	2	2	2	1	2	0
Academic Support	0	1	0	2	0	1	1	1	0	1
Nursing										
Instruction	5	1	6	1	5	1	5	0	5	2
Academic Support	1	0	1	0	1	0	1	0	1	0

West Virginia Wesleyan College

Employment in All Departments

(As of Oct. 31st each year)

Summary Pages (cont)

	Oct 31 2003		Oct 31 2004		Oct 31 2005		Oct 31 2006		Oct 31 2007	
	Full-time	Part-time	Full-time	Part-time	Full-time	Part-time	Full-time	Part-time	Full-time	Part-time
History / Political Science										
Instruction	7	3	7	5	6	5	5	4	5	4
Academic Support	0	0	0	0	0	0	0	0	0	0
Psychology										
Instruction	4	1	4	1	4	1	4	1	4	2
Academic Support	0	0	0	0	0	0	0	0	0	0
Sociology										
Instruction	3	2	3	2	3	1	4	1	2	3
Academic Support	0	0	0	0	0	0	0	0	0	0
Business										
Instruction	9.5	2	8.5	2	7.5	2	7.5	2	7.5	2
Academic Support	0	0	0	0	0	0	0	0	0	0
Education										
Instruction	5	1	5	1	4	6	5	5	6	6
Academic Support	1	0	1	0	1	0	1	0	1	0
Learning Center										
SASS	4	3	3	4	4	3	4	3	4.5	4
Lindamood Bell	2	3	2	3	2	4	2	4	2	3
Mentoring Advantage									0	5
Exercise Science										
Instruction	5	8	4	12	4	13	4	5	3	9
Academic Support	0	0	0	0	0	0	0	0	0	0
ESL										
Instruction	0.5	2	0.5	2	0.5	2	0.5	2	0.5	2
Academic Support	0	0	0	0	0	0	0	0	0	0
Writing Center										
Instruction	0.5	0	0.5	0	0.5	0	0.5	0	0.5	0
Academic Support	0	0	0	0	0	0	0	0	0	0
Distance Education										
Instruction	0	0	0	0	0	0	0	0	0	0
Academic Support	0	0	0	0	0	0	0	0	0	0
(in addition to Business)										
Instruction	0	5	0	7	0	5	0	7	0	8
Academic Support	0	0	0	1	0.75	0	0.75	0	1	0
Environmental Institute										
Instruction	0	0	0	0	0	0	0	0	0	0
Academic Support	0	1	0	1	0	0	0	0	0	0
Academic Department Totals										
Instruction	91	57	87.5	63	82.5	70	74.5	65	73.5	75
Academic Support	8	5	8	8	9.75	5	10.75	4	10.5	10
Total Positions	99	62	95.5	71	92.25	75	85.25	69	84	85

West Virginia Wesleyan College

Employment in All Departments

(As of Oct. 31st each year)

Summary Pages (cont)

	Oct 31 2003		Oct 31 2004		Oct 31 2005		Oct 31 2006		Oct 31 2007	
	Full-time	Part-time	Full-time	Part-time	Full-time	Part-time	Full-time	Part-time	Full-time	Part-time
Administrative Department										
Acad. & Career Counseling	4	0	4	0	3	0	3	0	3	0
Admission	15	0	14	1	14	1	15	1	15.5	1
Alumni	2	0	2	0	2	0	2	0	2	0
Annual Giving/Capital Campaign	4	0	4	0	3	0	4	0		
Athletic Training	2	0	2	1	2	1	2	1	Moved to College Advancement	3
Athletics	2	1	2.5	1	2.5	1	1.5	0	2	0
Audio Visual Dept.	1	0	1	0	1	0	1	0	1	0
Baseball	1	1	1	1	1	1	1	1	1	1
Baseball and Softball	0	0	0	0	0	0	0	0		
Bookstore (contracted out)	0	0	0	0	0	0	0	0		
Business	3	0	3	0	3	0	3	0		
Campaign	1	1	1	1	1	1	0	0	Merged into Student Accounts & Comptroller	0
Campus Center	0	0	0	0	0	0	0	0	0	0
Cheerleading	0	0	0	0	0	0	0	0	0	0
College Advancement	3	1	3	1	4	1	4	1	9	1
College Legal Counsel	0.5	0	0.5	0	0.5	0	0.5	0	0.5	0
Comptroller	1	1	1	1	1	1	1	1	4	1
Computing Services	9	0	9	0	10	0	9	0	9	0
Counseling	2	1	2	1	2	1	2	1	2	1
Cross Country	0.5	0	0	0	0	0	0	0	0	0
Cross Country and Track	0	0	0	0	0	0	0	0	0	0
Dean of Students	2	0	2	0	2	0	3	0	3	0
Dean of the Chapel	2	1	2	1	2	1	1	2	2	1
Financial Planning	4	0	5	0	5	0	3	0	4	0
Football	3	2	3	3	3	3	3	4	3	4
Golf	0	1	0	1	0	1	0	1	0	2
Greek Affairs Coordinator	0.25	0	0.5	0	0.5	0	0.5	0	0.5	0
Health Center	0	1	0	1	0	1	0	1	0	1
Housing / Dormitories	5	1	5	2	5	2	5	1	5	1
Institutional Research	1	0	1	0	1	0	1	0	1	0
Intercultural Relations	1	0	1	0	1	0	1	0	1	0
Intramural	0.5	0	0.5	0	0.5	0	0.5	0	0.5	0
Lacrosse	0.25	0	0	0	0	0	0	0	0	0
Library	8	1	8	1	8	1	7	1	8	1
M. Basketball	2	0	2	0	1	1	1	1	1	2
Marketing and Communication	4	0	4	0	5.25	0	5.25	0	5	0
Men's Soccer	1	1	1	1	1	0	1	0	1	1
Men's Tennis	0	2	0	1	0	1	0	1	0	1
Murmurmontis/Pharos	0	1	0	1	0	1	0	1	0	1
Office of Finance	2	0	2	0	2	0	2	0	2	0
Outdoor Recreation	0.5	1	0	1	0	2	0	2	0	2
Personnel	2	0	2	0	2	0	2	0	1	0
Planned Giving	2	0	2	0	0	0	0	0	0	0
Post Office	2	1	2	1	2	0	2	1	2	1
President	2	0	2	0	2	0	2	0	2	0
Student Accounts	4	0	3.5	0	3.5	1	3.5	1	5	0
Radio-WVWC-FM	0	0	0	0	0	0	0	0	0	0
Recycling Coordinator	0	1	0	0	0	0	0	0	0	0
Registrar	2	0	2	0	2	0	2	0	2	0
Security	5	4	5	4	5	4	6	2	6	3
Service Center	0	0	0	0	0	0	0	0	Part of Student Accounts	
Sleeth Gallery	0	1	0	1	0	1	0	1	0	1
Softball	1	1	1	1	1	1	1	1	1	2
Sports Information	0	2	0	2	0	2	0	2	0	2
Student Programming	1	0	1	0	1	0	1	0	1	0
Student Volunteer Programs	1	0	1	0	1	0	1	1	1	1
Sunny Bucks	0	0	0	0	0	0	0	0	0	0
Swimming	1	1	1	1	1	1	1	0	1	1
Switchboard	0	0	0	0	0	0	0	0	0	0
Tennis	0	0	0	0	0	0	0	0	0	0
Track	0.5	0	1	2	1	2	1	2	1	2
Volleyball	0	3	1	1	1	1	0	2	1	1
VP Academic Affairs	3	0	3	1	3	2	2	1	2	3
W. Basketball	1	2	1	2	1	1	1	1	1	2
W. Soccer	1	1	1	1	1	1	1	1	1	1
W. Tennis	0	2	0	2	0	2	0	2	0	2
Total Administration	116	37	116.5	40	114.75	41	109.75	39	116	47
Craft / Truck Drivers									14	0
Custodians / Grounds									31	2
Office Personnel									5	0
Total Physical Plant									50	2
Total College Positions	215	99	212	111	207	116	195	108	200	132

West Virginia Wesleyan College

2007-2008
Fall Semester

Profile of Full-Time Teaching Faculty

Title	Number	%	Tenured	%	Doctorate	%	Terminal Degree	%	9 Mo.	9 Mo.	% Change from
									Salary Ave. 2006-07	Salary Ave. 2007-08	
Professors	18		18	100%	16	89%	17	94%	\$56,771	\$56,645	-0.22%
Men	12	67%	12	100%	11	92%	12	100%	\$57,663	\$57,548	-0.20%
Women	6	33%	6	100%	5	83%	5	83%	\$54,840	\$54,840	0.00%
Associate Professors	29		24	83%	24	83%	25	86%	\$48,304	\$48,698	0.82%
Men	16	55%	13	81%	12	75%	14	88%	\$49,696	\$50,378	1.37%
Women	13	45%	11	85%	12	92%	11	85%	\$46,592	\$46,630	0.08%
Assistant Professors	15		2	13%	10	67%	10	67%	\$39,389	\$40,536	2.91%
Men	7	47%	1	14%	3	43%	3	43%	\$40,575	\$39,911	-1.64%
Women	8	53%	1	13%	7	88%	7	88%	\$37,694	\$41,083	8.99%
Instructors	7		0	0%	0	0%	0	0%	\$35,258	\$36,464	3.42%
Men	3	43%	0	0%	0	0%	0	0%	\$35,183	\$37,750	7.30%
Women	4	57%	0	0%	0	0%	0	0%	\$35,333	\$35,500	0.47%
Total	69		44	64%	50	72%	52	75%	\$48,824	\$47,756	-2.19%
Total Men	38	55%	26	68%	26	68%	29	76%	\$48,954	\$49,717	1.56%
Total Women	31	45%	18	58%	24	77%	23	74%	\$45,141	\$45,351	0.47%

Faculty Counts as defined by AAUP/IPEDS

Of the 16 faculty not holding doctorates, all are qualified at the Master's or equivalent professional level.

Faculty Census Head Count		
Full-Time	Part-Time	Total
69	69	138

This count does not include SASS staff or instructors of developmental courses.

Faculty Full-Time Equivalent

1998	1999	2000	2001	2002	2003	2004	2005	2006	2007
106.8	107.0	103.9	98.23	99.73	106.0	106.7	106.7	94.0	92.0

Faculty FTE = Semester Faculty Load Hours Divided by 12. This does include load hours for all instructors of traditional undergraduate courses.

Student Faculty Ratio

1998	1999	2000	2001	2002	2003	2004	2005	2006	2007
14.4:1	14.6:1	13.7:1	14.4:1	14.9:1	14.8:1	13.8:1	12.3:1	12.7:1	13.2:1

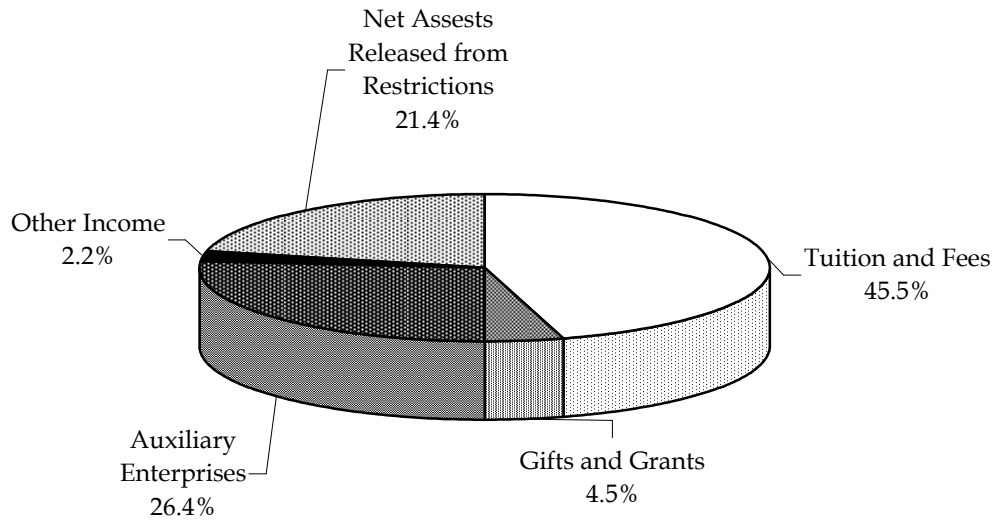
(Fall 2007 FTE traditional undergraduates=1217)

Student - Faculty Ratio = ((Total Traditional Undergraduate FTE)/Faculty FTE).

Finances

West Virginia Wesleyan College

Unrestricted Revenues and Gains FY 2007

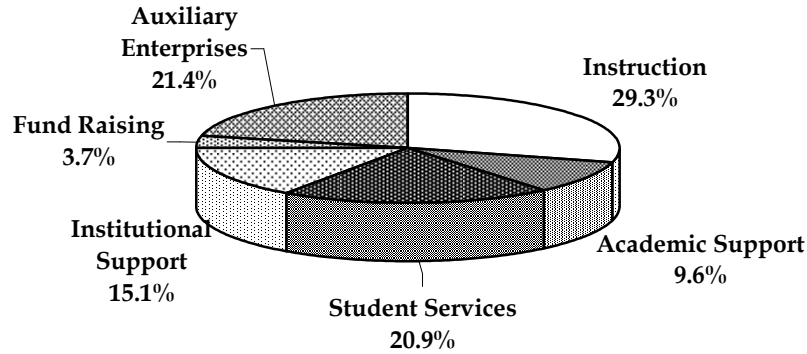


(Revenues in Million Dollars)

	<u>FY 2003</u>	<u>FY 2004</u>	<u>FY 2005</u>	<u>FY2006</u>	<u>FY 2007</u>
Tuition and Fees	\$ 13.11	\$ 13.66	\$ 13.15	\$ 12.54	\$ 11.07
Federal Grants					
Contributions					
Gifts and Grants	\$ 1.46	\$ 1.07	\$ 1.04	\$ 0.86	\$ 1.10
Auxiliary Enterprises	\$ 7.57	\$ 8.44	\$ 7.30	\$ 6.84	\$ 6.42
Investment Income	\$ (0.22)	\$ 0.42	.	\$ 0.54	\$ 0.53
Net Assets Released from Restriction:	\$ 2.89	\$ 3.36	\$ 4.06	\$ 2.88	\$ 5.22
Total Current Funds Revenues	\$ 24.81	\$ 26.94	\$ 25.54	\$ 23.66	\$ 24.33
Fall FTE Enrollment	1571	1594	1503	1352	1194

West Virginia Wesleyan College

Expenditures by Category FY 2007



(Expenditures in Million Dollars)

	<u>FY 2003</u>	<u>FY 2004</u>	<u>FY 2005</u>	<u>FY 2006</u>	<u>FY 2007</u>
Instruction	\$ 6.92	\$ 7.06	\$ 6.92	\$ 6.47	\$ 7.11
Academic Support	\$ 3.04	\$ 3.10	\$ 2.12	\$ 2.02	\$ 2.32
Student Services	\$ 4.76	\$ 4.75	\$ 4.99	\$ 4.42	\$ 5.08
Institutional Support	\$ 3.11	\$ 3.14	\$ 3.52	\$ 3.96	\$ 3.66
Fund Raising	\$ 1.04	\$ 0.94	\$ 1.96	\$ 1.97	\$ 0.91
Operations and Maintenance of Plant*	\$ 1.85	\$ 1.89	\$ 1.00	\$ 0.93	\$ -
Auxiliary Enterprises	\$ 5.46	\$ 5.34	\$ 5.38	\$ 5.12	\$ 5.19
Total Current Funds Expenditures	\$ 26.18	\$ 26.21	\$ 25.88	\$ 24.88	\$ 24.27
Fall FTE Enrollment	1571	1594	1503	1352	1192

* FY 2007 Operation and Maintenance of Plant is allocated to into the functional categories as is required by current auditing guidelines)

West Virginia Wesleyan College Recent Tuition and Fee History

			Technology	Technology						
		Student	Infrastructure Fee	Laptop Fee	Technology	Facilities	Room &		Dollar	Percent
	<u>Tuition</u>	<u>Activity Fee</u>	<u>(All Students)</u>	<u>Freshmen</u>	<u>Fee</u>	<u>Fee**</u>	<u>Board</u>	<u>TOTAL</u>	<u>Increase</u>	<u>Increase</u>
1989-90	\$ 8,430	NA	NA	NA			\$ 3,000	\$ 11,430	\$ 1,790	8.96%
1990-91	\$ 10,930	NA	NA	NA			\$ 3,000	\$ 13,930	\$ 2,500	21.87%
1991-92	\$ 11,830	NA	NA	NA			\$ 3,150	\$ 14,980	\$ 1,050	7.54%
1992-93	\$ 12,605	NA	NA	NA			\$ 3,350	\$ 15,955	\$ 975	6.51%
1993-94	\$ 13,400	NA	NA	NA			\$ 3,500	\$ 16,900	\$ 945	5.92%
1994-95	\$ 14,200	NA	NA	NA			\$ 3,775	\$ 17,975	\$ 1,075	6.36%
1995-96	\$ 14,750	NA	NA	NA			\$ 3,850	\$ 18,600	\$ 625	3.48%
1996-97	\$ 14,975	\$ 200	NA	NA			\$ 3,975	\$ 19,150	\$ 550	2.96%
1997-98	\$ 15,275	\$ 200	\$ 300	\$ 500			\$ 3,975	\$ 20,250	\$ 1,100	5.74%
1998-99	\$ 15,750	\$ 200	\$ 300	\$ 500			\$ 4,100	\$ 20,850	\$ 600	2.96%
1999-00	\$ 16,300	\$ 200	\$ 300	\$ 750			\$ 4,225	\$ 21,775	\$ 925	4.44%
2000-01	\$ 16,800	\$ 200	\$ 300	\$ 750			\$ 4,220	\$ 22,270	\$ 495	2.27%
2001-02	\$ 17,300	\$ 200	\$ 450	\$ 750			\$ 4,220	\$ 22,920	\$ 650	2.92%
2002-03	\$ 17,900	\$ 200			\$ 1,200		\$ 4,820	\$ 23,970	\$ 1,050	4.58%
2003-04 with STI	\$ 18,450	\$ 200			\$ 1,200		\$ 5,200	\$ 25,050	\$ 1,080	4.51%
2004-05	\$ 19,450	\$ 200			\$ 600	\$ 200	\$ 5,200	\$ 25,730	\$ 680	2.71%
2005-06	\$ 20,250	\$ 200			\$ 600	\$ 200	\$ 5,550	\$ 26,880	\$ 1,150	4.47%
2006-07	20,250	200	-	-	600	200	5,550	\$ 26,880	\$ -	0.00%
2007-2008	20,980	200			650		6,160	\$ 27,990	\$ 1,110	4.13%
** combined with tuition in 2006-07										
Source: Schedule of Tuition and Fees each year.										

*Comparison Institutions
Group Data*

Peer and Competitive Institutions by 2007-2008 Total Direct Cost

2005-2005 Position	2006-2007 Position	2007-2008 Position	State	Name	2006-2007			2007-2008			Change			
					2006-2007 Undergraduate Tuition and Fees	2006-2007 Room and Board	2006-2007 Direct Costs	2007-2008 Undergraduate Tuition and Fees	2007-2008 Room and Board	2007-2008 Direct Costs	Tuition and Fee \$ Increase 06-07 to 07-08	Tuition and Fee % increase	Total Direct Cost \$ increase 06-07 to 07-08	Total Direct Cost % increase
2	1	1	PA	Washington & Jefferson College*	\$ 28,080	\$ 7,602	\$ 35,682	\$ 29,532	\$ 8,030	\$ 37,562	\$ 1,452	5.2%	\$ 1,880	6.4%
1	2	2	PA	Albright College	\$ 27,420	\$ 8,158	\$ 35,578	\$ 28,884	\$ 8,484	\$ 37,368	\$ 1,464	5.3%	\$ 1,790	6.2%
3	3	3	VA	Roanoke College*	\$ 24,653	\$ 8,152	\$ 32,805	\$ 26,250	\$ 8,726	\$ 34,976	\$ 1,597	6.5%	\$ 2,171	8.3%
5	5	4	VA	Lynchburg College*	\$ 25,265	\$ 6,400	\$ 31,665	\$ 27,215	\$ 7,370	\$ 34,585	\$ 1,950	7.7%	\$ 2,920	9.2%
4	4	5	PA	Lycoming College	\$ 25,605	\$ 6,826	\$ 32,431	\$ 27,139	\$ 7,238	\$ 34,377	\$ 1,534	6.0%	\$ 1,946	6.0%
7	6	6	PA	Westminster College*	\$ 24,200	\$ 7,070	\$ 31,270	\$ 25,530	\$ 7,660	\$ 33,190	\$ 1,330	5.5%	\$ 1,920	6.1%
6	7	7	PA	Duquesne University*	\$ 22,665	\$ 8,296	\$ 30,961	\$ 23,950	\$ 8,546	\$ 32,496	\$ 1,285	5.7%	\$ 1,535	5.0%
8	8	8	OH	Marietta College*	\$ 23,814	\$ 7,030	\$ 30,844	\$ 24,842	\$ 7,390	\$ 32,232	\$ 1,028	4.3%	\$ 1,388	4.5%
9	9	9	OH	Otterbein College	\$ 23,871	\$ 6,789	\$ 30,660	\$ 25,065	\$ 7,149	\$ 32,214	\$ 1,194	5.0%	\$ 1,554	5.1%
10	10	10	VA	Virginia Wesleyan College	\$ 23,236	\$ 6,859	\$ 30,095	\$ 24,515	\$ 6,900	\$ 31,415	\$ 1,279	5.5%	\$ 1,320	4.4%
11	11	11	WV	Wheeling Jesuit University*	\$ 22,810	\$ 6,910	\$ 29,720	\$ 23,490	\$ 7,230	\$ 30,720	\$ 680	3.0%	\$ 1,000	3.4%
12	12	12	WV	University of Charleston*	\$ 21,000	\$ 7,600	\$ 28,600	\$ 22,050	\$ 7,930	\$ 29,980	\$ 1,050	5.0%	\$ 1,380	4.8%
15	14	13	NC	Elon College*	\$ 20,441	\$ 6,850	\$ 27,291	\$ 22,166	\$ 7,296	\$ 29,462	\$ 1,725	8.4%	\$ 2,171	8.0%
14	13	14	OH	Mount Union College	\$ 20,970	\$ 6,350	\$ 27,320	\$ 22,050	\$ 6,700	\$ 28,750	\$ 1,080	5.2%	\$ 1,430	5.2%
13	15	15	WV	West Virginia Wesleyan College	\$ 21,250	\$ 5,630	\$ 26,880	\$ 21,830	\$ 6,160	\$ 27,990	\$ 580	2.7%	\$ 1,110	4.1%
16	16	16	NC	High Point University*	\$ 18,139	\$ 7,550	\$ 25,689	\$ 19,850	\$ 7,960	\$ 27,810	\$ 1,711	9.4%	\$ 2,121	8.3%
20	18	17	WV	Bethany College*	\$ 16,550	\$ 7,770	\$ 24,320	\$ 18,205	\$ 7,770	\$ 25,975	\$ 1,655	10.0%	\$ 1,655	6.8%
17	17	18	NC	Wingate College*	\$ 17,650	\$ 6,750	\$ 24,400	\$ 18,480	\$ 7,100	\$ 25,580	\$ 830	4.7%	\$ 1,180	4.8%
18	19	19	WV	Davis & Elkins College*	\$ 17,730	\$ 6,300	\$ 24,030	\$ 18,745	\$ 6,350	\$ 25,095	\$ 1,015	5.7%	\$ 1,065	4.4%
19	20	20	OH	Muskingum College	\$ 17,195	\$ 6,740	\$ 23,935	\$ 17,970	\$ 7,000	\$ 24,970	\$ 775	4.5%	\$ 1,035	4.3%
21	21	21	PA	Waynesburg College	\$ 15,780	\$ 6,370	\$ 22,150	\$ 16,420	\$ 6,700	\$ 23,120	\$ 640	4.1%	\$ 970	4.4%
22	22	22	PA	Grove City College*	\$ 10,962	\$ 5,766	\$ 16,728	\$ 11,500	\$ 6,134	\$ 17,634	\$ 538	4.9%	\$ 906	5.4%
				Average	\$ 21,331	\$ 6,989	\$ 28,321	\$ 22,531	\$ 7,356	\$ 29,886	\$ 1,200	5.7%	\$ 1,566	5.7%
				Minimum	\$ 10,962	\$ 5,630	\$ 16,728	\$ 11,500	\$ 6,134	\$ 17,634	\$ 538	2.7%	\$ 906	3.4%
				Maximum	\$ 28,080	\$ 8,296	\$ 35,682	\$ 29,532	\$ 8,726	\$ 37,562	\$ 1,950	10.0%	\$ 2,920	9.2%
				Median	\$ 21,958	\$ 6,855	\$ 29,160	\$ 22,828	\$ 7,267	\$ 30,350	\$ 1,237	5.3%	\$ 1,483	5.2%
				#National Average	\$ 22,308	\$ 8,189	\$ 30,497	\$ 23,712	\$ 8,595	\$ 32,307	\$ 1,404	6.3%	\$ 1,810	5.9%

			State	Name	2006-2007				2007-2008				Change	
					In-state Tuition/ Fees	Out of State Tuition/ Fees	Room and Board	Total In-State Direct Cost	In-state Tuition/ Fees	Out of State Tuition/ Fees	Room and Board	Total In-State Direct Cost	Total Direct Cost \$ increase 06-07 to 07-08	Total Direct Cost % increase
			OH	Ohio University*	\$ 8,727	\$ 17,691	\$ 7,839	\$ 16,566	\$ 8,727	\$ 17,961	\$ 8,427	\$ 17,154	\$ 588	3.5%
			MD	Frostburg State University*	\$ 6,616	\$ 15,442	\$ 6,800	\$ 13,416	\$ 6,550	\$ 16,162	\$ 7,600	\$ 14,150	\$ 734	5.5%
			VA	James Madison University*	\$ 6,290	\$ 16,236	\$ 6,756	\$ 13,046	\$ 6,666	\$ 17,386	\$ 7,108	\$ 13,774	\$ 728	5.6%
			WV	West Virginia University*	\$ 4,486	\$ 13,840	\$ 6,422	\$ 10,908	\$ 4,722	\$ 14,600	\$ 6,826	\$ 11,548	\$ 640	5.9%
			WV	Marshall University*	\$ 4,150	\$ 11,054	\$ 6,044	\$ 10,194	\$ 4,410	\$ 11,324	\$ 6,492	\$ 10,902	\$ 708	6.9%
			WV	Shepherd College*	\$ 4,400	\$ 11,464	\$ 6,456	\$ 10,856	\$ 4,566	\$ 12,036	\$ 6,985	\$ 11,551	\$ 695	6.4%
			WV	Concord College*	\$ 4,204	\$ 9,338	\$ 6,070	\$ 10,274	\$ 4,414	\$ 9,806	\$ 6,280	\$ 10,694	\$ 420	4.1%
			WV	Fairmont State*	\$ 4,218	\$ 7,524	\$ 6,318	\$ 10,536	\$ 4,632	\$ 9,556	\$ 6,315	\$ 10,947	\$ 411	3.9%

* Indicates Colleges and Universities with which we compete for students

Private 4 year National Average according to the College Board Trends in College Pricing Report 2007

Sources: US News Best Colleges 2008 and IPEDS Peer Analysis Tool

West Virginia Wesleyan College Comparison Group 2006-07*

Basic Characteristics											
Institution Name	UMC	ACA	State	CC2005 Basic	CC2005: GR Instruct. Program	CC2005 UG Profile	CC2005: Enroll Profile	CC2005: Size/Setting	Athletic Affiliation	Fall 2006 FTE Students	Value of endowment assets at the end of the fiscal year(F0506)
Asbury College			KY	21 (BA A&S)	1 (Single PB EDU)	10 (FT 4yr, Sel, LTR)	3 (Vhigh UG)	11 (Sm 4 yr High. Res.)	NAIA	1167	\$29,431,947
Georgetown College			KY	21 (BA A&S)	1 (Single PB EDU)	10 (FT 4yr, Sel, LTR)	4 (High UG)	11 (Sm 4 yr High. Res.)	NAIA	1565	\$38,650,448
Kentucky Wesleyan College	UMC		KY	21 (BA A&S)	DK	11 (FT 4yr, Sel, HTR)	2 (Only UG 4 yr)	7 (VSm 4 yr Prim. Res.)	NCAA II	930	\$26,574,282
Lindsey Wilson College	UMC	ACA	KY	21 (BA A&S)	11 (PB Prof. other Dom)	11 (FT 4yr, Sel, HTR)	4 (High UG)	10 (Sm 4 yr Prim. Res.)	NAIA	1683	\$12,667,257
University of the Cumberlands		ACA	KY	22 (BA Diverse Fields)	1 (Single PB EDU)	10 (FT 4yr, Sel, LTR)	3 (Vhigh UG)	11 (Sm 4 yr High. Res.)	NAIA	1550	\$58,323,107
Bluffton University			OH	22 (BA Diverse Fields)	9 (PB Prof. EDU Dom)	11 (FT 4yr, Sel, HTR)	3 (Vhigh UG)	11 (Sm 4 yr High. Res.)	NCAA III	1110	\$19,353,128
Heidelberg College			OH	20 (MA and Univ. Smaller)	10 (PB Prof. BUS Dom)	10 (FT 4yr, Sel, LTR)	3 (Vhigh UG)	11 (Sm 4 yr High. Res.)	NCAA III	1252	\$35,464,833
Hiram College			OH	21 (BA A&S)	0	10 (FT 4yr, Sel, LTR)	3 (Vhigh UG)	8 (VSm 4 yr High Res.)	NCAA III	1062	\$68,721,523
Malone College			OH	20 (MA and Univ. Smaller)	9 (PB Prof. EDU Dom)	10 (FT 4yr, Sel, LTR)	3 (Vhigh UG)	11 (Sm 4 yr High. Res.)	NAIA	1927	\$17,264,903
Marietta College			OH	22 (BA Diverse Fields)	6 (PB with A&S EDU Dom)	10 (FT 4yr, Sel, LTR)	3 (Vhigh UG)	11 (Sm 4 yr High. Res.)	NCAA III	1443	\$60,559,023
Wilmington College			OH	22 (BA Diverse Fields)	1 (Single PB EDU)	8 (Med. FT 4yr, Sel, HTR)	3 (Vhigh UG)	10 (Sm 4 yr Prim. Res.)	NCAA III	1457	\$25,473,245
Elizabethtown College			PA	22 (BA Diverse Fields)	0	12 (FT 4yr, More Sel, LTR)	3 (Vhigh UG)	11 (Sm 4 yr High. Res.)	NCAA III	2103	\$44,761,591
Geneva College			PA	22 (BA Diverse Fields)	10 (PB Prof. BUS Dom)	10 (FT 4yr, Sel, LTR)	4 (High UG)	11 (Sm 4 yr High. Res.)	NCAA III (07-08)	1785	\$30,231,373
Juniata College			PA	21 (BA A&S)	DK	12 (FT 4yr, More Sel, LTR)	2 (Only UG 4 yr)	11 (Sm 4 yr High. Res.)	NCAA III	1415	\$62,211,273
King's College			PA	20 (MA and Univ. Smaller)	11 (PB Prof. other Dom)	10 (FT 4yr, Sel, LTR)	3 (Vhigh UG)	10 (Sm 4 yr Prim. Res.)	NCAA III	2070	\$51,839,406
Lebanon Valley College	UMC		PA	22 (BA Diverse Fields)	10 (PB Prof. BUS Dom)	10 (FT 4yr, Sel, LTR)	3 (Vhigh UG)	11 (Sm 4 yr High. Res.)	NCAA III	1774	\$44,240,440
Saint Vincent College			PA	21 (BA A&S)	1 (Single PB EDU)	10 (FT 4yr, Sel, LTR)	3 (Vhigh UG)	11 (Sm 4 yr High. Res.)	NCAA III (0607)	1686	\$54,497,848
Carson-Newman College		ACA	TN	21 (BA A&S)	9 (PB Prof. EDU Dom)	11 (FT 4yr, Sel, HTR)	3 (Vhigh UG)	11 (Sm 4 yr High. Res.)	NCAA II	1879	\$35,754,087
King College		ACA	TN	22 (BA Diverse Fields)	2 (Single PB BUS)	11 (FT 4yr, Sel, HTR)	3 (Vhigh UG)	8 (VSm 4 yr High Res.)	NAIA	1125	\$27,404,898
Bridgewater College			VA	21 (BA A&S)	DK	10 (FT 4yr, Sel, LTR)	2 (Only UG 4 yr)	11 (Sm 4 yr High. Res.)	NCAA III	1503	\$59,909,200
Eastern Mennonite University			VA	21 (BA A&S)	8 (PB with A&S Other Dom)	11 (FT 4yr, Sel, HTR)	4 (High UG)	11 (Sm 4 yr High. Res.)	NCAA III	1185	\$20,580,814
Mary Baldwin College			VA	20 (MA and Univ. Smaller)	6 (PB with A&S EDU Dom)	8 (Med. FT 4yr, Sel, HTR)	4 (High UG)	10 (Sm 4 yr Prim. Res.)	NCAA III	1340	\$35,094,337
Maryville College		ACA	TN	21 (BA A&S)	DK	12 (FT 4yr, More Sel, LTR)	2 (Only UG 4 yr)	11 (Sm 4 yr High. Res.)	NCAA III	1142	\$36,524,518
Virginia Union University			VA	22 (BA Diverse Fields)	3 (Single PB Other)	10 (FT 4yr, Sel, LTR)	4 (High UG)	10 (Sm 4 yr Prim. Res.)	NCAA II	1549	\$23,220,890
Virginia Wesleyan College	UMC		VA	21 (BA A&S)	DK	11 (FT 4yr, Sel, HTR)	2 (Only UG 4 yr)	10 (Sm 4 yr Prim. Res.)	NCAA III	1251	\$45,557,424
Bethany College		ACA	WV	21 (BA A&S)	DK	10 (FT 4yr, Sel, LTR)	2 (Only UG 4 yr)	8 (VSm 4 yr High Res.)	NCAA III	824	\$40,135,978
University of Charleston		ACA	WV	22 (BA Diverse Fields)	2 (Single PB BUS)	11 (FT 4yr, Sel, HTR)	3 (Vhigh UG)	8 (VSm 4 yr High Res.)	NCAA II	1153	\$29,371,718
West Virginia Wesleyan College	UMC	ACA	WV	21 (BA A&S)	2 (Single PB BUS)	10 (FT 4yr, Sel, LTR)	3 (Vhigh UG)	11 (Sm 4 yr High. Res.)	NCAA II	1191	\$42,391,450
Wheeling Jesuit University		ACA	WV	20 (MA and Univ. Smaller)	11 (PB Prof. other Dom)	10 (FT 4yr, Sel, LTR)	4 (High UG)	11 (Sm 4 yr High. Res.)	NCAA II	1196	\$17,466,715
Lynchburg College			VA	20 (MA and Univ. Smaller)	9 (PB Prof. EDU Dom)	10 (FT 4yr, Sel, LTR)	3 (Vhigh UG)	11 (Sm 4 yr High. Res.)	NCAA III	2176	\$75,796,332
Emory and Henry College	UMC	ACA	VA	21 (BA A&S)	1 (Single PB EDU)	10 (FT 4yr, Sel, LTR)	3 (Vhigh UG)	8 (VSm 4 yr High Res.)	NCAA III	982	\$79,824,032
Westminster College			PA	21 (BA A&S)	1 (Single PB EDU)	10 (FT 4yr, Sel, LTR)	3 (Vhigh UG)	11 (Sm 4 yr High. Res.)	NCAA III	1407	\$90,595,261
Count										29	29
75% tile										1683	45557424
Median										1415	35754087
25% tile										1167	26574282
Average										1425	37713023

*WVWC Baseline Comparison Group Criteria:

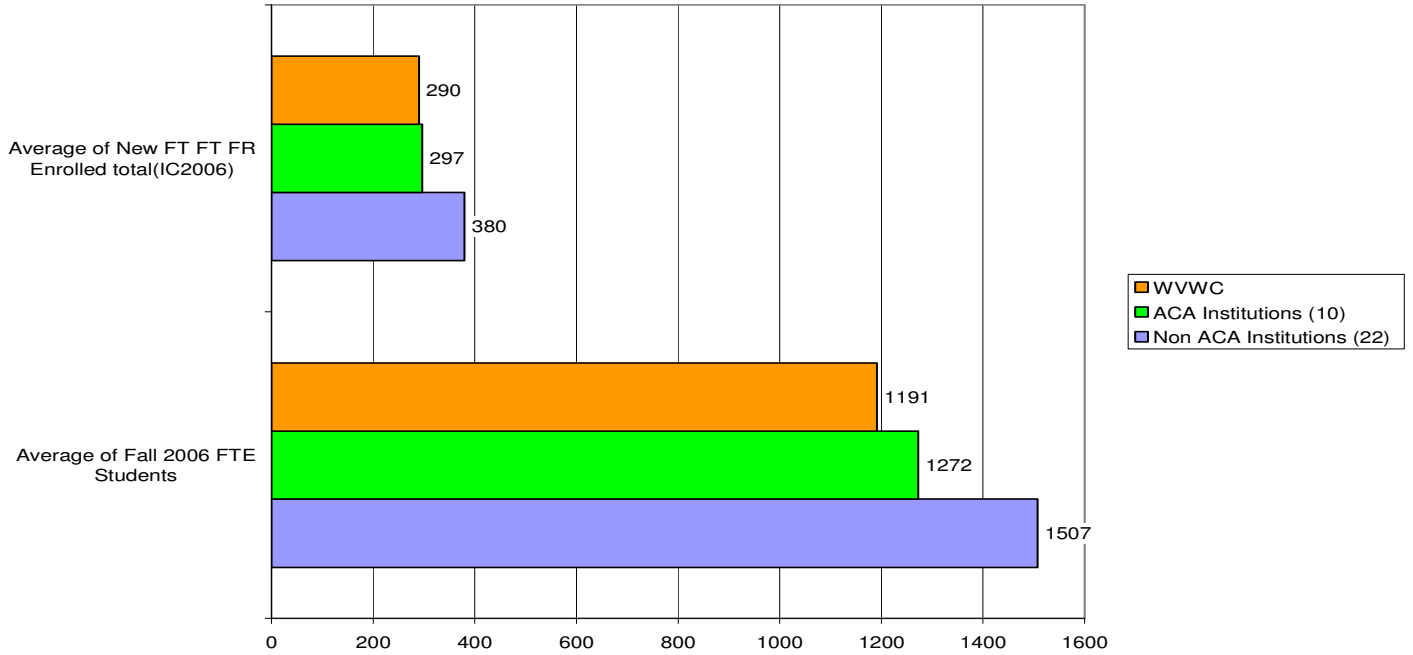
States	WV, PA, OH, MD, KY, VA, TN
CC2005 Basic	Masters (Small), BA (LA), BA (Comp)
CC2005 (Undergraduate Profile)	FT, Sel., FT More Sel., Med FT Sel.
CC2005 (Enrollment Profile)	Exclusively to Majority Undergraduate
CC2005 (Size and Setting)	Very Small and Small primarily and highly residential
FTE Enrollment	500 to 2000
Endowment	\$15 Million to \$75 Million

Selected Statistics

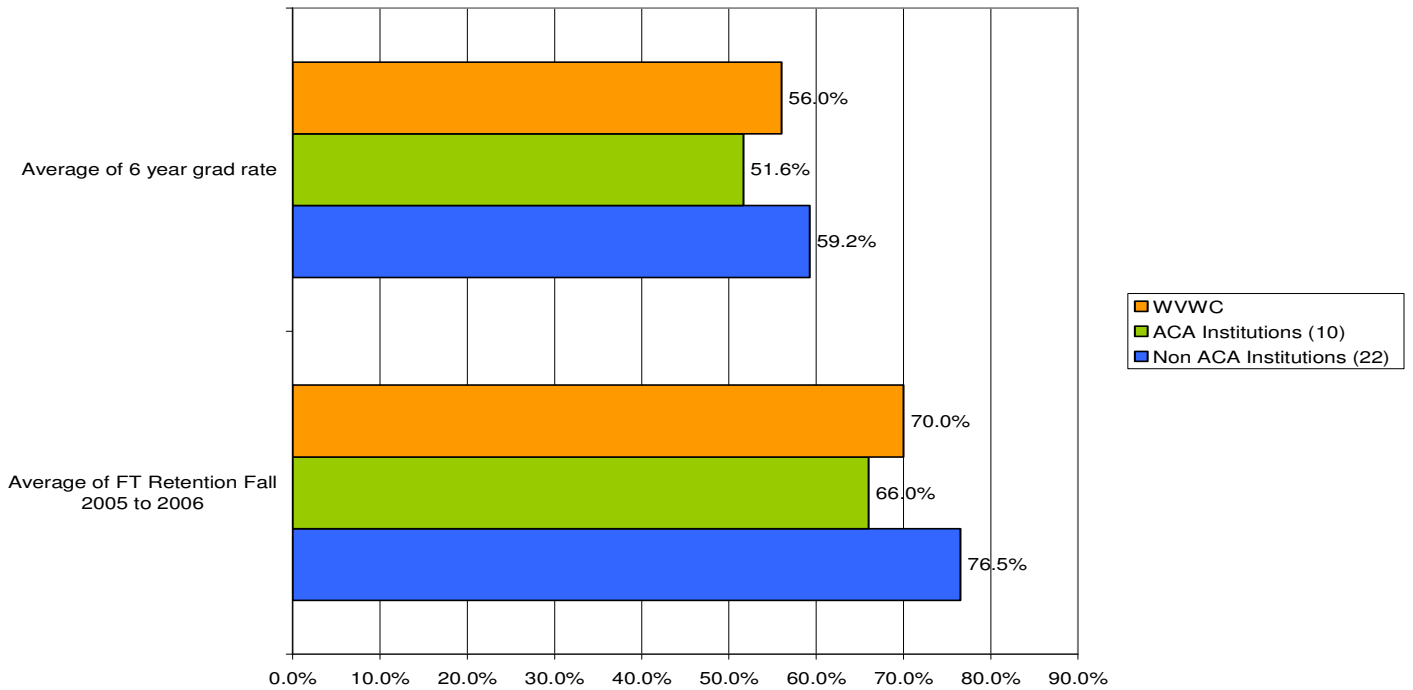
WVWC and Comparison School Benchmarks

Enrollment and Retention

**Enrollment Benchmarks
Fall 2006**



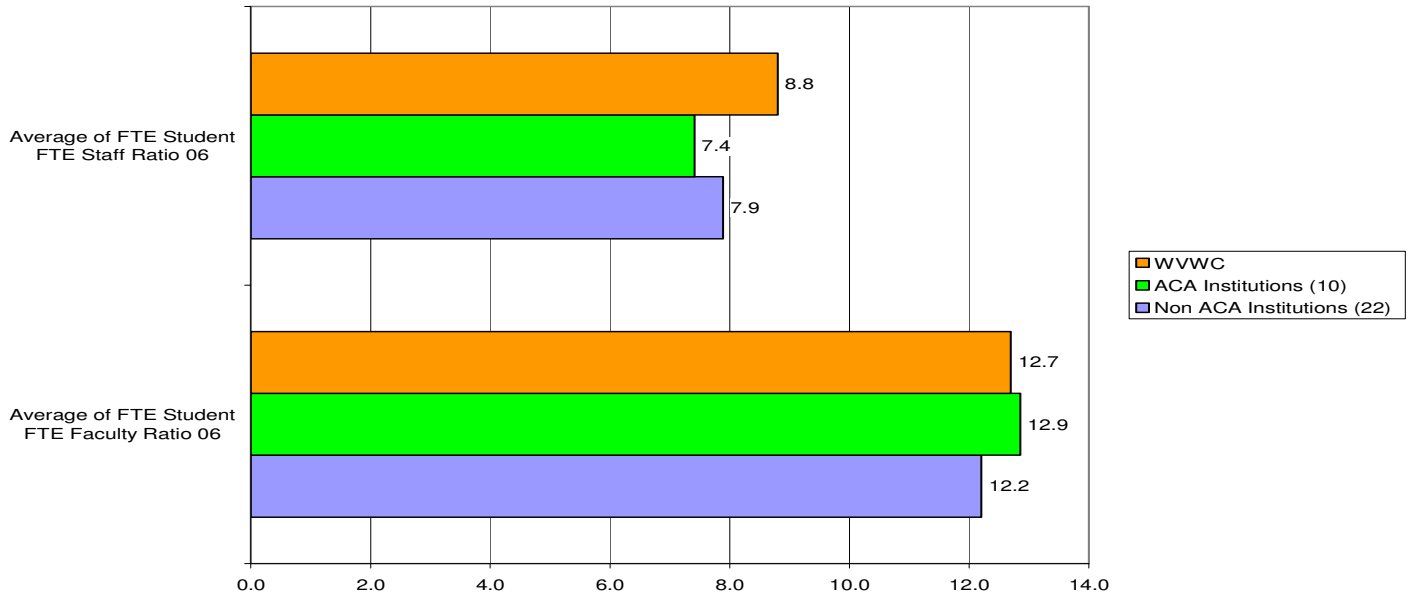
Graduation and First Year Retention Rates



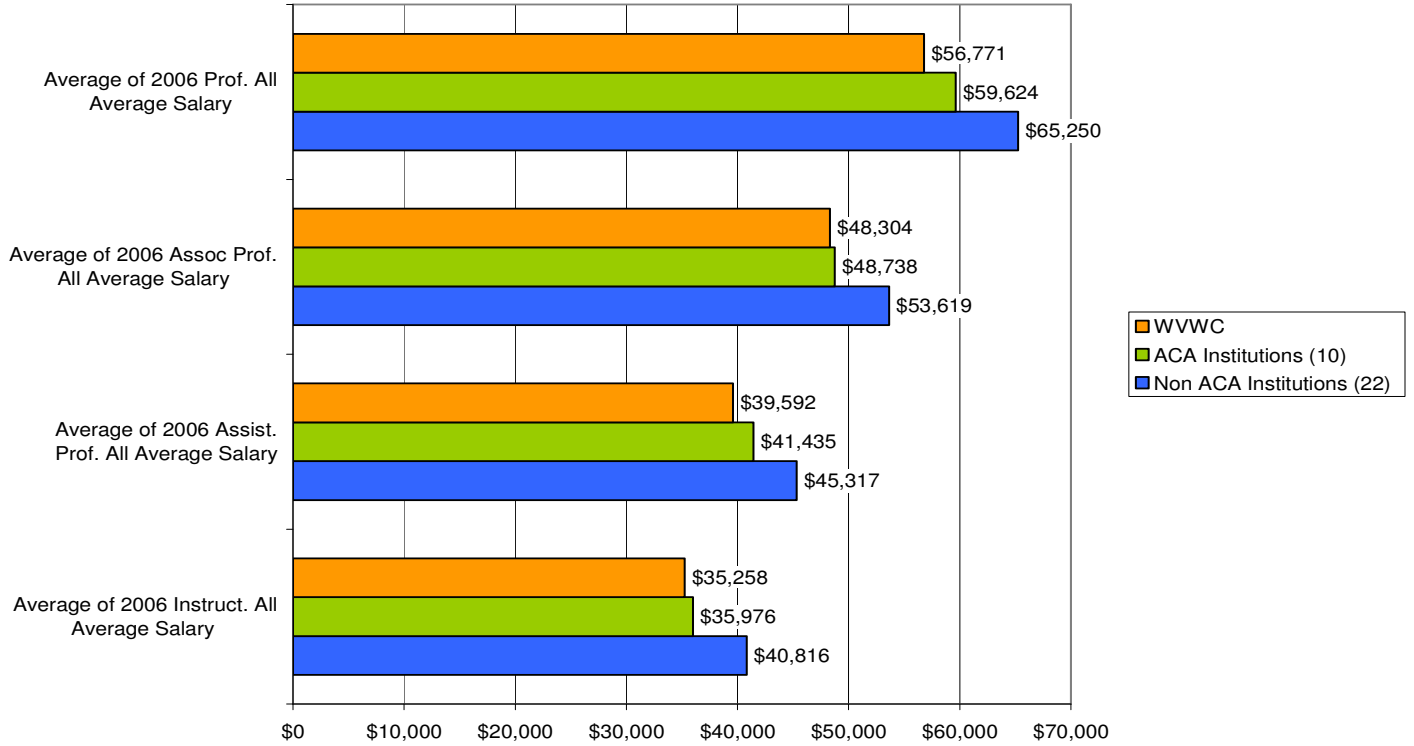
Source: IPEDS Peer Analysis System June, 2007

Selected Statistics WVWC and Comparison School Benchmarks Faculty and Staff

**FTE Student to FTE Faculty and FTE Student to FTE Staff Ratios
Fall 2006**



2006-07 Instructional Faculty Salaries by Rank

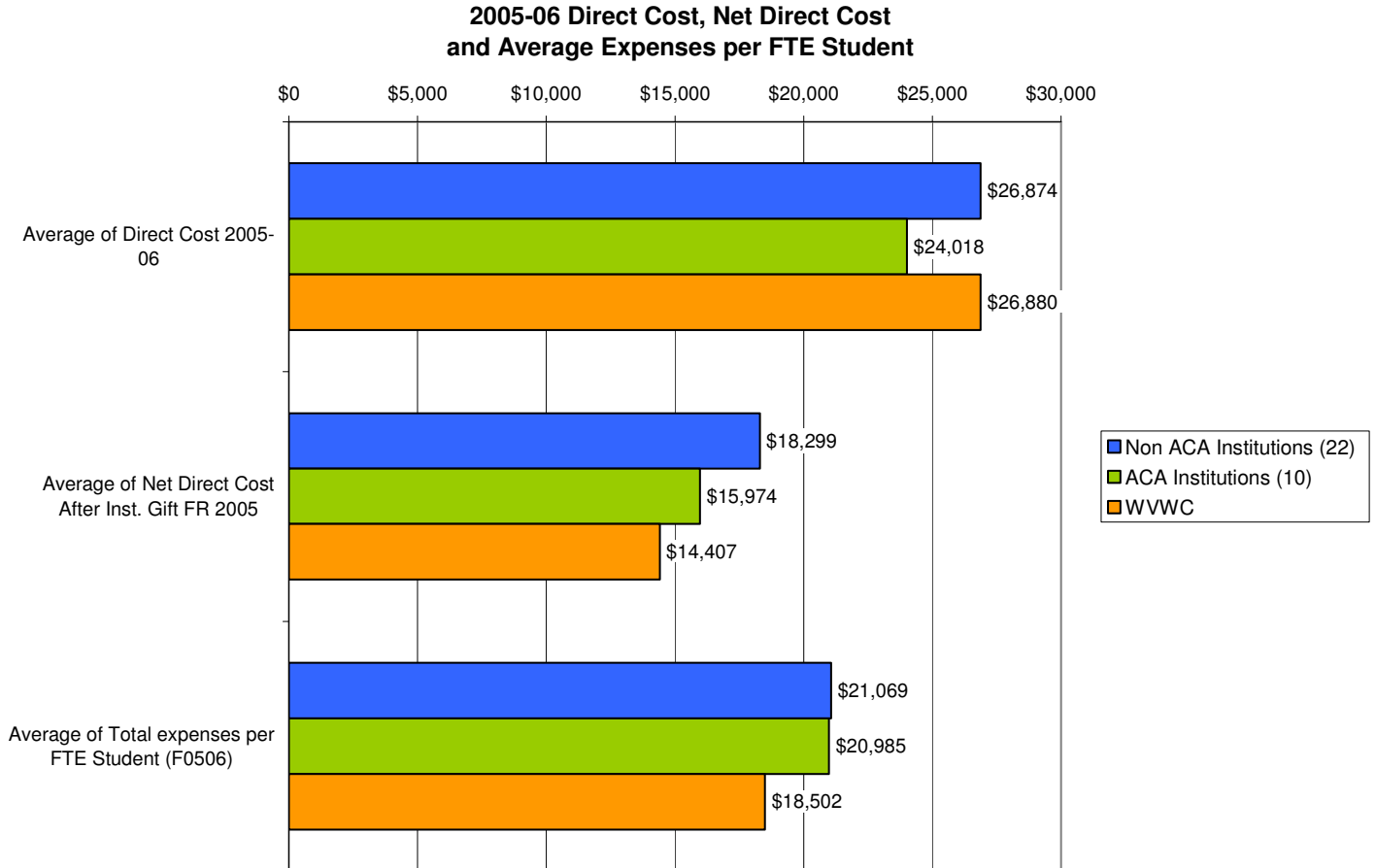


Source: IPEDS Peer Analysis System June, 2007

Selected Statistics

WVWC and Comparison School Benchmarks

Direct Cost, Net Direct Cost and Expenses per FTE Student



Source: IPEDS Peer Analysis System June, 2007